
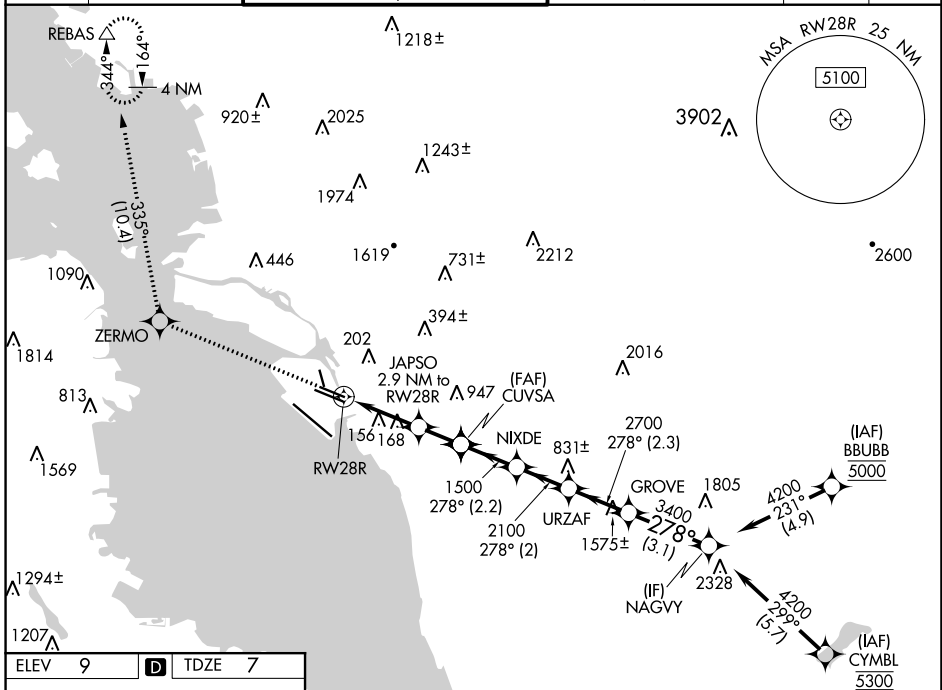


WAAS CH 42535 W28B	APP CRS 278°	Rwy Idg TDZE Apt Elev	5457 7 9
--	------------------------	-----------------------------	-------------------------------------

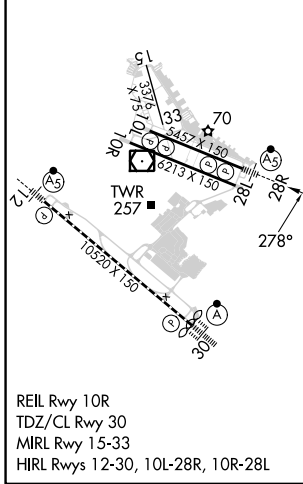
RNAV (GPS) Y RWY 28R

SAN FRANCISCO BAY OAKLAND INTL (OAK)

<p>▼ DME/DME RNP-0.3 NA. For uncompensated Baro-VNAV systems, LNAV/VNAV NA below 1°C (34°F) or above 54°C (130°F). #RVR 1800 authorized with use of FD or AP or HUD to DA.</p>	<p>MALSR</p> 	<p>MISSED APPROACH: Climb to 3000 direct ZERMO and on track 335° to REBAS and hold.</p>			
<p>D-ATIS 133.775</p>	<p>NORCAL APP CON 125.35 263.15</p>	<p>OAKLAND TOWER 118.3 291.65 (Rwys 10L/R-28L/R, 15-33) 127.2 256.9 (Rwy 12-30)</p>	<p>GND CON 121.9 (Rwys 10L/R-28L/R, 15-33) 121.75 (Rwy 12-30)</p>	<p>CLNC DEL 121.1</p>	<p>CPDLC</p>



ELEV 9	D	TDZE 7
--------	----------	--------



3000	ZERMO	tr	335°	REBAS			
*LNAV only.							
	RWY28R	JAPSO 2.9 NM to RWY28R	CUVSA	NIXDE	URZAF	GROVE	NAGVY
	980*	1500	1500	2100	2700	3400	4200
	1.2 NM	1.7 NM	1.6 NM	2.2 NM	2.2 NM	2.3 NM	3.1 NM
GP 3.00°	TCH 53						
CATEGORY	A		B		C		D
LPV DA #	207/24 200 (200-½)						
LNAV/VNAV DA	387/40 380 (400-¾)						
LNAV MDA	440/24		433 (500-½)		440/40		433 (500-¾)
C CIRCLING	560-1		551 (600-1)		660-1¾ 651 (700-1¾)		1400-3 1391 (1400-3)

SW-2, 31 OCT 2024 to 28 NOV 2024

SW-2, 31 OCT 2024 to 28 NOV 2024