

ILS or LOC/DME Z RWY 36

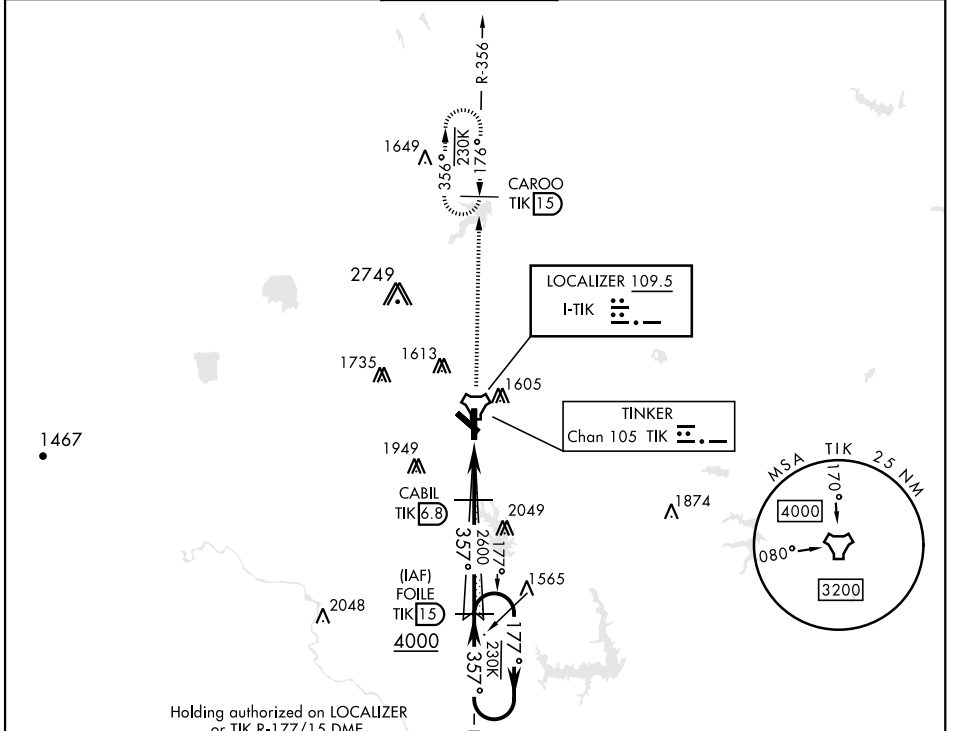
LOC I-TIK 109.5	APCH CRS 357°	Rwy ldg 11,100 TDZE 1291 Arprt Elev 1291	[USAF]	TINKER AFB (KTIK)
---------------------------	-------------------------	---	--------	-------------------

▼ * When ALS inop, increase CAT ABC RVR to 50 and vis to 1 mile, CAT DE RVR to 60 and vis to 1¼ mile.
 ** CAT E Circling NA to Rwy 18 and in sector S of Rwy 13-31 and W of Rwy 18-36.

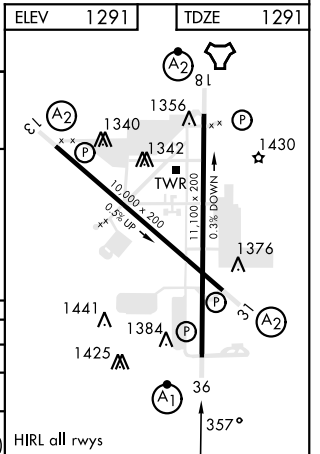
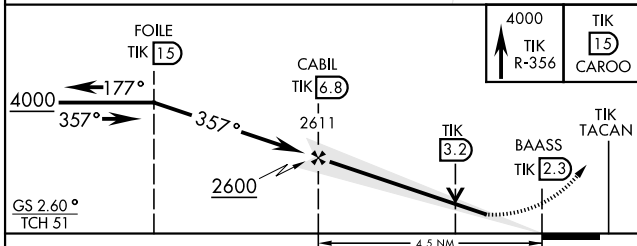
ALSF-1
A1

MISSED APPROACH: Climb to 4000 on TIK TACAN R-356 to CAROO and hold.

ATIS ★ 270.1	OKE CITY APP CON 120.45 288.325	TOWER 124.45 251.05	GND CON 121.8 275.8	CLNC DEL 119.7 335.8	ASR
------------------------	---	-------------------------------	-------------------------------	--------------------------------	-----



EMERG SAFE ALT 100 NM 4700



CATEGORY	A	B	C	D	E
S-ILS 36	1491/24		200	(200-½)	
S-LOC 36 *	1680/24	389 (400-½)	1680/35	389 (400-¾)	
C CIRCLING **	1820-1	1840-1	1960-1¾	1960-2	1960-2¼
	529 (600-1)	549 (600-1)	669 (700-1¾)	669 (700-2)	669 (700-2¼)

HIRL all rwys

ILS or LOC/DME Z RWY 36

SC-1, 31 OCT 2024 to 28 NOV 2024

SC-1, 31 OCT 2024 to 28 NOV 2024