

LOC/DME RWY 31

LOC I-PLH 111.7	APCH CRS 308°	Rwy ldg 10,000 TDZE 1276 Arprt Elev 1291	[USAF]	TINKER AFB (KTIK)
---------------------------	-------------------------	---	--------	-------------------

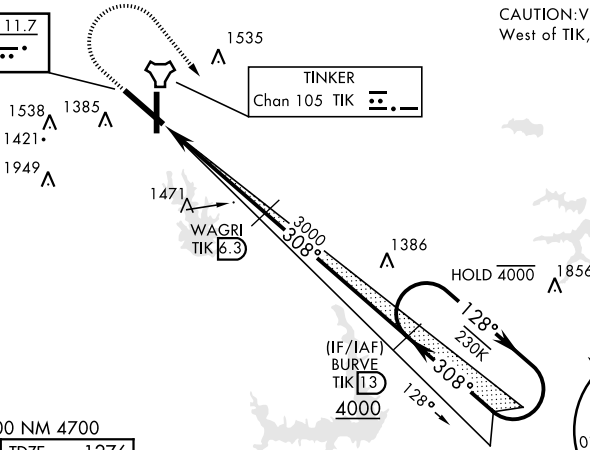
RADAR required	SALS (A2)	† MISSED APPROACH: Climb straight ahead to 2500, then turn right to 4000 direct I-PLH and TIK 13 DME (BURVE) and hold.
----------------	---------------------	--

ATIS ★ 270.1	OKE CITY APP CON 120.45 288.325	TOWER 124.45 251.05	GND CON 121.8 275.8	CLNC DEL 119.7 335.8	ASR
------------------------	---	-------------------------------	-------------------------------	--------------------------------	-----

When VGSI inop, procedure NA at night

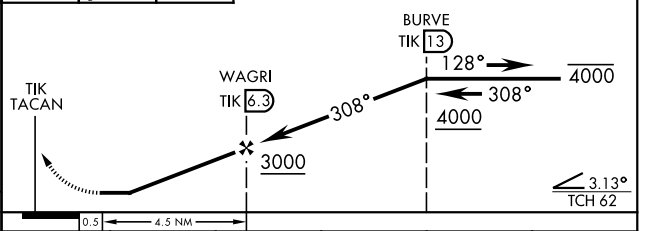
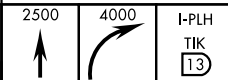
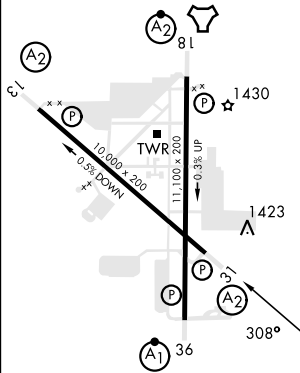
† Missed approach requires use of RNAV or ATC RADAR monitoring.

LOCALIZER **111.7**
I-PLH



EMERG SAFE ALT 100 NM 4700

ELEV 1291	TDZE 1276
-----------	-----------



HIRL all rws	FAF to MAP 4.5 NM	CATEGORY	A	B	C	D	E
Knots	60 90 120 150 180	S-LOC 31*	1740/50 464 (500-1)	1740/60 464 (500-1½)	1960-1¾ 669 (700-1¾)	1980-2¼ 689 (700-2¼)	1960-2¼ 669 (700-2¼)
Min:Sec	4:30 3:00 2:15 1:48 1:30	CIRCLING**	1840-1 549 (600-1)	1960-1¾ 669 (700-1¾)	1980-2¼ 689 (700-2¼)	1960-2¼ 669 (700-2¼)	

LOC/DME RWY 31

SC-1, 31 OCT 2024 to 28 NOV 2024

SC-1, 31 OCT 2024 to 28 NOV 2024