

WAAS CH 82712 W11A	APP CRS 112°	Rwy Idg 4808 TDZE 1487 Apt Elev 1497
--	------------------------	---

RNAV (GPS) RWY 11

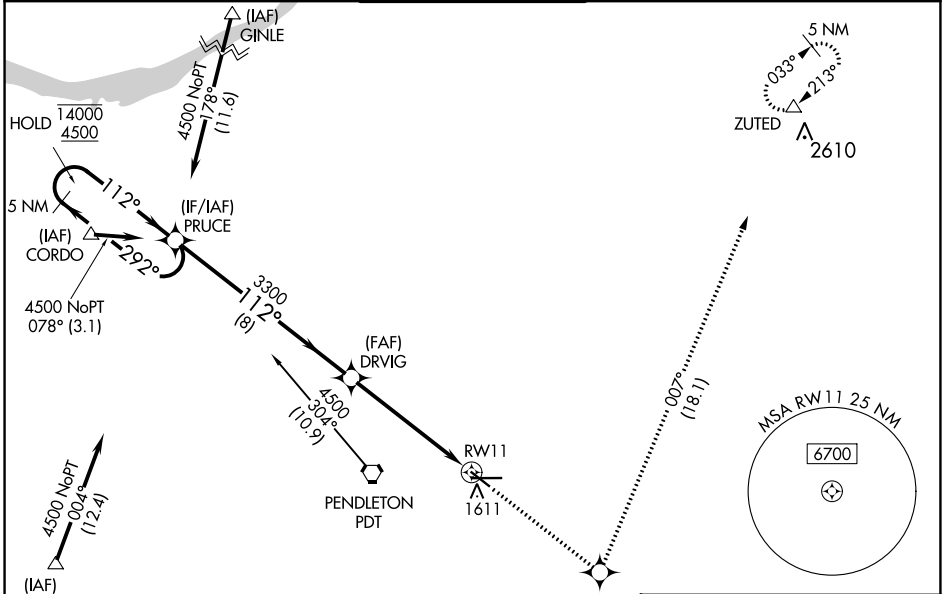
EASTERN OREGON RGNL AT PENDLETON (PDT)

RNP APCH.

⚠ Baro-VNAV and VDP NA when using Walla Walla altimeter setting. For uncompensated Baro-VNAV systems, LNAV/VNAV NA below -17°C or above 54°C. When local altimeter setting not received, use Walla Walla altimeter setting and increase all DA/MDA 120 feet; VNAV all Cats visibility 1/8 SM, LNAV Cat C visibility 3/8 SM, and Cat D visibility 1/8 SM, Circling Cat C visibility 1/4 SM and Circling Cat D visibility 1/2 SM.

⚠ MISSED APPROACH: Climb to 5000 direct ADXAB and on track 007° to ZUTED and hold.

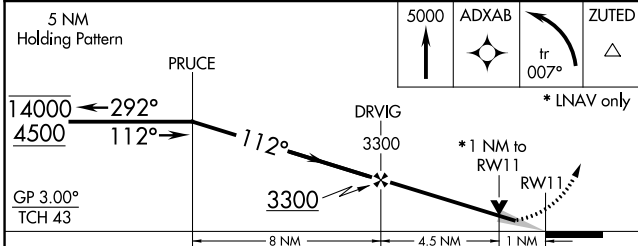
ASOS 118.325	SPOKANE APP CON * 133.15 379.15	PENDLETON TOWER * 119.7 (CTAF) 257.8	GND CON 121.9 257.8	UNICOM 122.95
------------------------	---	--	-------------------------------	-------------------------



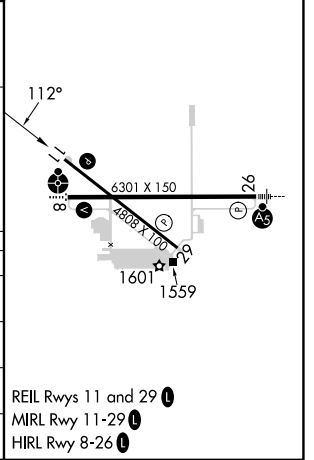
NW-1, 31 OCT 2024 to 28 NOV 2024

NW-1, 31 OCT 2024 to 28 NOV 2024

ELEV 1497	D TDZE 1487
-----------	--------------------



CATEGORY	A	B	C	D
LPV DA	1737-1 250 (300-1)			
LNAV/VNAV DA	1850-1¼ 363 (400-1¼)			
LNAV MDA	1860-1 373 (400-1)		1860-1¼ 373 (400-1¼)	
C CIRCLING	1920-1 423 (500-1)	1960-1 463 (500-1)	1980-1½ 483 (500-1½)	2200-2¼ 703 (800-2¼)



REIL Rwy 11 and 29 **L**
MRL Rwy 11-29 **L**
HIRL Rwy 8-26 **L**