

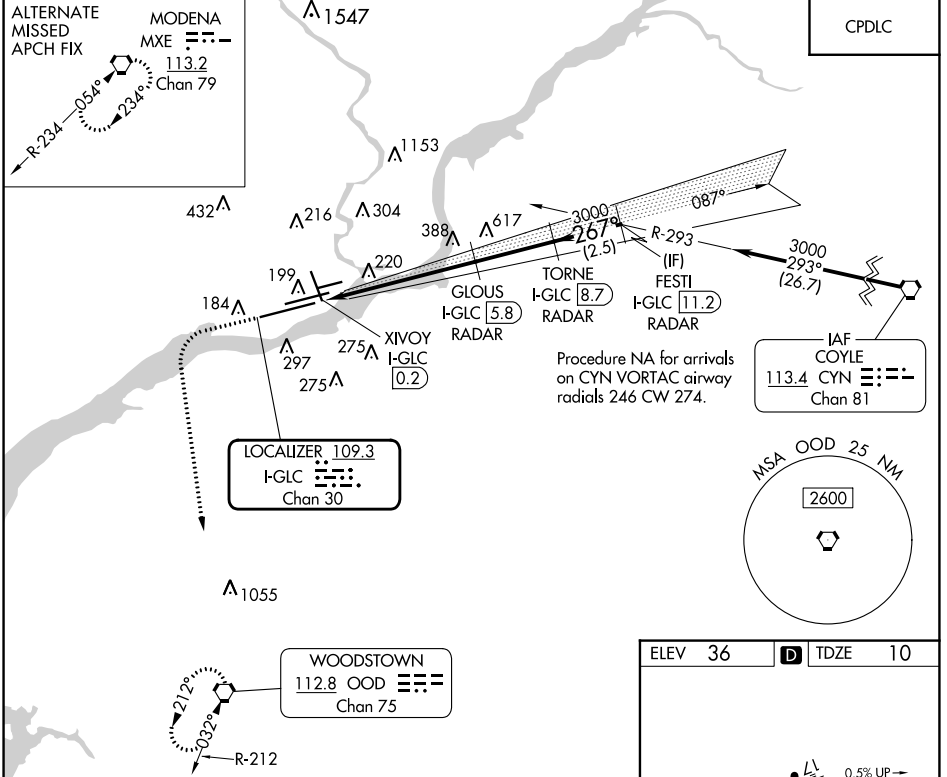
LOC/DME I-GLC 109.3 Chan 30	APP CRS 267°	Rwy Idg TDZE Apt Elev 9912 10 36
--	------------------------	--

ILS or LOC RWY 27L

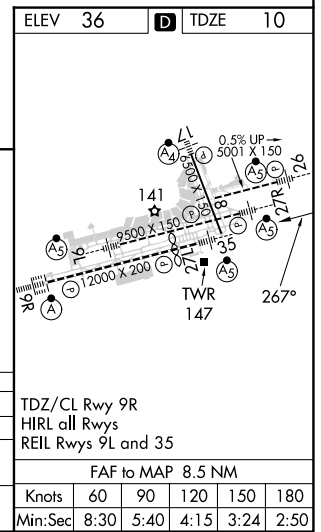
PHILADELPHIA INTL (PHL)

DME or RADAR required.	MALSR	MISSED APPROACH: Climb to 1500 then climbing left turn to 3000 direct OOD VORTAC and hold.
▼ * RVR 1800 authorized with use of FD or AP or HUD to DA.		

D-ATIS ARR 133.4 DEP 135.925	PHILADELPHIA APP CON 124.35 319.15	PHILADELPHIA TOWER 118.5 327.05 (Rwys 9L/27R, 8/26 and 17/35) 135.1 327.05 (Rwy 9R/27L)	GND CON 121.9 348.6	CLNC DEL 118.85 348.6
--	--	---	-------------------------------	---------------------------------



1500	3000	OOD	VGSI and ILS glidepath not coincident (VGSI Angle 3.00°/TCH 73).	TORNE I-GLC [8.7] RADAR	FESTI I-GLC [11.2] RADAR
				GLOUS I-GLC [5.8] RADAR	
I-GLC	I-GLC			3000	3000
DME ANTENNA	XIVOY I-GLC [0.2]			2060	3000
					GS 3.00° TCH 57
0.7	0.8		4.8 NM	2.9 NM	2.5 NM



CATEGORY	A	B	C	D	TDZ/CL Rwy 9R
S-ILS 27L*	210/24 200 (200-1/2)				HIRL all Rwys
S-LOC 27L	560/24	550 (600-1/2)	560/60	550 (600-1 1/4)	REIL Rwys 9L and 35
C CIRCLING	560-1	600-1	620-1 5/8	720-2 1/4	FAF to MAP 8.5 NM
	524 (600-1)	564 (600-1)	584 (600-1%)	684 (700-2 1/4)	Knots 60 90 120 150 180
					Min:Sec 8:30 5:40 4:15 3:24 2:50

NE-4, 31 OCT 2024 to 28 NOV 2024

NE-4, 31 OCT 2024 to 28 NOV 2024