

WAAS CH 90122	APP CRS 268°	Rwy Idg TDZE 11	8864
W27B		Apt Elev 36	

RNAV (GPS) RWY 27R

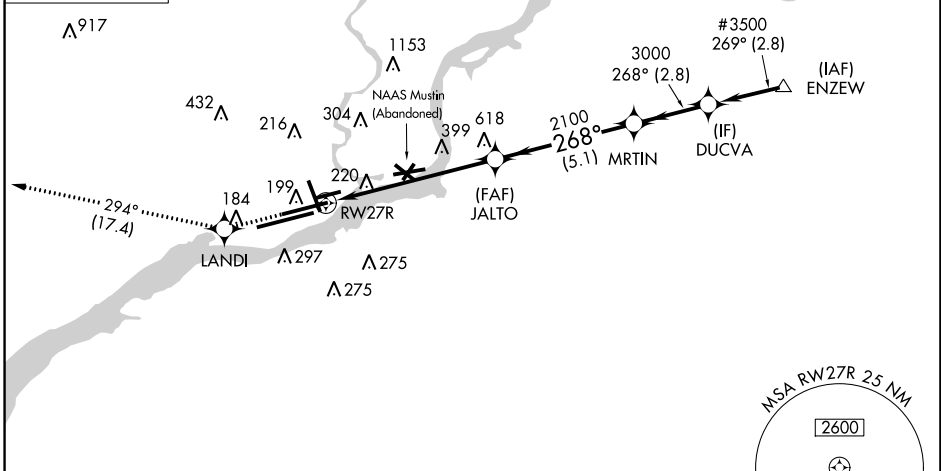
PHILADELPHIA INTL (PHL)

For uncompensated Baro-VNAV systems, LNAV/VNAV NA below -12°C (11°F) or above 54°C (130°F). DME/DME RNP-0.3 NA. For inop ALS, increase LNAV/VNAV all Cats visibility to 1 3/8 SM and LNAV Cat C/D to 2 SM.		MALS R	MISSED APPROACH: Climb to 3000 direct LANDI and on track 294° to MXE VORTAC and hold.
D-ATIS ARR 133.4 DEP 135.925	PHILADELPHIA APP CON 124.35 319.15	PHILADELPHIA TOWER 118.5 327.05 (Rwys 9L/27R, 8/26 and 17/35) 135.1 327.05 (Rwy 9R/27L)	GND CON 121.9 348.6
			CLNC DEL 118.85 348.6

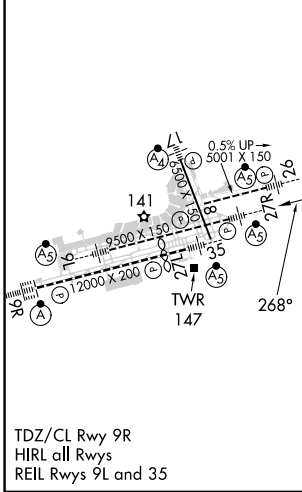
MISSED APCH FIX MODENA MXE

CPDLC

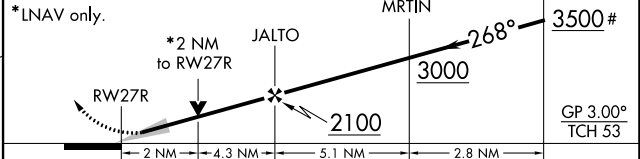
#3000 when authorized by ATC.



ELEV 36	D	TDZE 11
---------	----------	---------



3000	LANDI	tr 294°	MXE	VGSI and RNAV glidepath not coincident (VGSI Angle 3.00°/TCH 81).	# 3000 when authorized by ATC.
------	-------	---------	-----	---	--------------------------------



CATEGORY	A	B	C	D
LPV DA	267/24 256 (300-1/2)			
LNAV/VNAV DA	520/60 509 (500-1 1/4)			
LNAV MDA	720/24	709 (700-1/2)	720-1 1/2 709 (700-1 1/2)	720-1 3/4 709 (700-1 3/4)
CIRCLING	720-1	684 (700-1)	720-2 684 (700-2)	720-2 1/4 684 (700-2 1/4)