

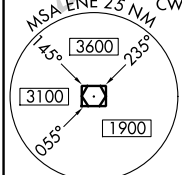
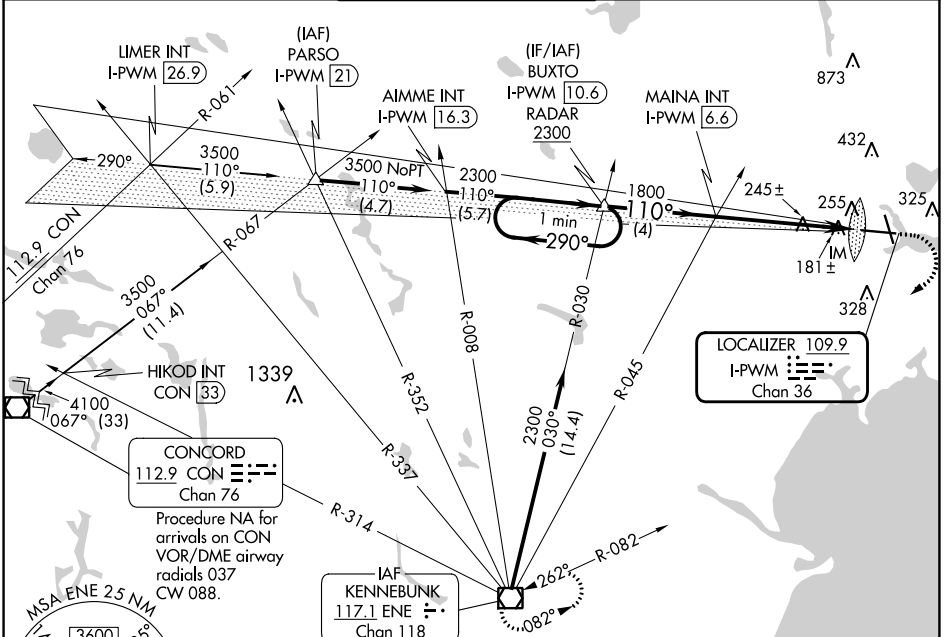
LOC/DME I-PWM 109.9 Chan 36	APP CRS 110°	Rwy Idg 7200 TDZE 76 Apt Elev 76
---	------------------------	---

ILS RWY 11 (SA CAT I)

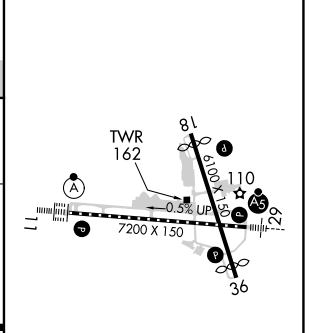
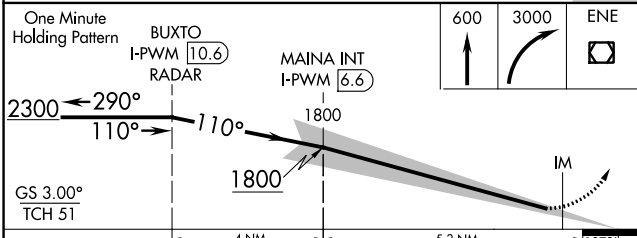
PORTLAND INTL JETPORT (PWM)

Procedure NA when control tower closed. Requires specific OPSPEC, MSPEC, or LOA approval and use of HUD to DH.	ALSIF-2	MISSED APPROACH: Climb to 600 then climbing right turn to 3000 direct ENE VOR/DME and hold.

ATIS 119.05	PORTLAND APP CON * 119.75 269.35	PORTLAND TOWER * 120.9 (CTAF) 257.8	GND CON 121.9	CLNC DEL 121.9	UNICOM 122.95
-----------------------	--	--	-------------------------	--------------------------	-------------------------



ELEV 76	TDZE 76
---------	---------



CATEGORY	A	B	C	D
S-ILS 11	RA 166/14		150 DA 226	

SA CATEGORY I ILS - SPECIAL AIRCREW & AIRCRAFT CERTIFICATION REQUIRED

- TDZ/CL Rwy 11
- MIRL Rwy 18-36
- HIRL Rwy 11-29
- REIL Rwy 18 and 36

NE-1, 31 OCT 2024 to 28 NOV 2024

NE-1, 31 OCT 2024 to 28 NOV 2024