

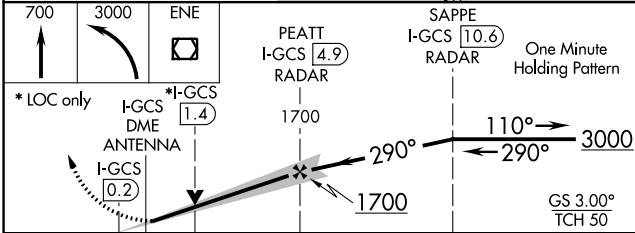
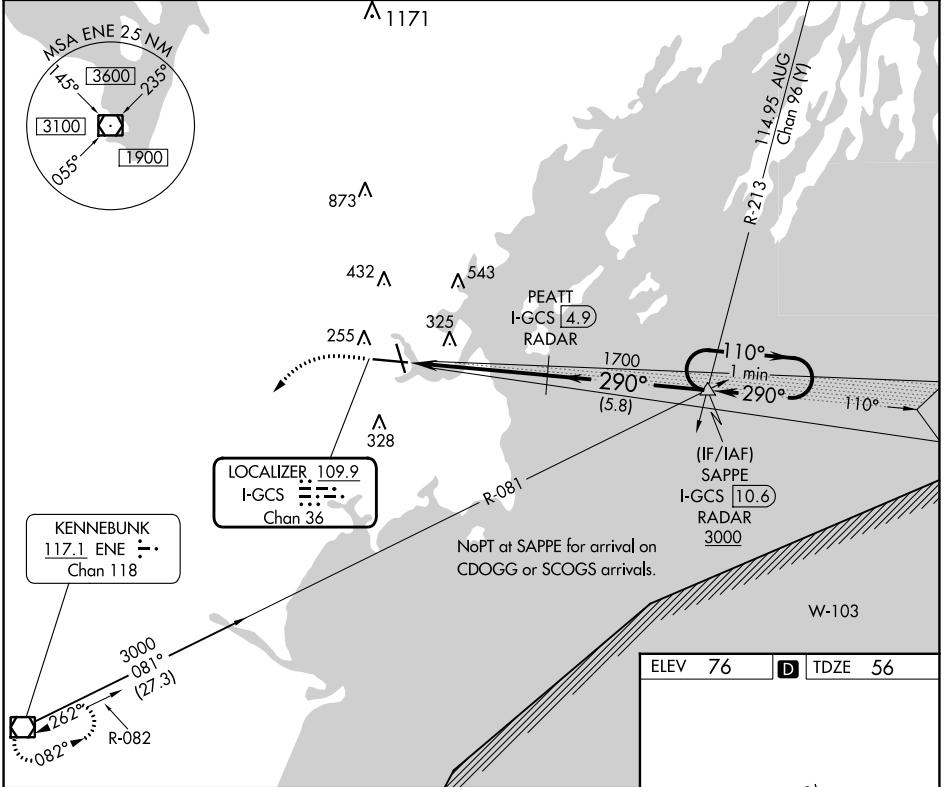
LOC/DME I-GCS 109.9 Chan 36	APP CRS 290°	Rwy Idg 7200 TDZE 56 Apt Elev 76
---	------------------------	---

ILS or LOC RWY 29

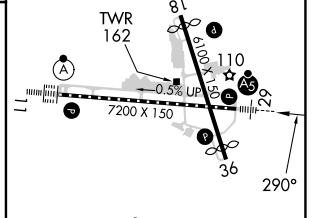
PORTLAND INTL JETPORT (P^WM)

<p>⚠ **RVR 1800 authorized with use of FD or AP or HUD to DA. DME or RADAR required.</p>	<p>MALSR </p>	<p>MISSED APPROACH: Climb to 700 then climbing left turn to 3000 direct ENE VOR/DME and hold.</p>
---	-------------------	---

ATIS 119.05	PORTLAND APP CON * 119.75 269.35	PORTLAND TOWER * 120.9 (CTAF) 257.8	GND CON 121.9	CLNC DEL 121.9	UNICOM 122.95
-----------------------	--	--	-------------------------	--------------------------	-------------------------



ELEV 76	TDZE 56
---------	---------



CATEGORY	A	B	C	D
S-ILS 29**	256/24 200 (200-½)			
S-LOC 29	580/24 544 (600-½)	580/55 524 (600-1)		
CIRCLING	620-1 544 (600-1)	640-1 564 (600-1)	740-1¾ 664 (700-1¾)	860-2½ 784 (800-2½)
	FAF to MAP 5.1 NM			
	Knots 60	90	120	150 180
	Min:Sec 5:06	3:24	2:33	2:02 1:42

NE-1, 31 OCT 2024 to 28 NOV 2024

NE-1, 31 OCT 2024 to 28 NOV 2024