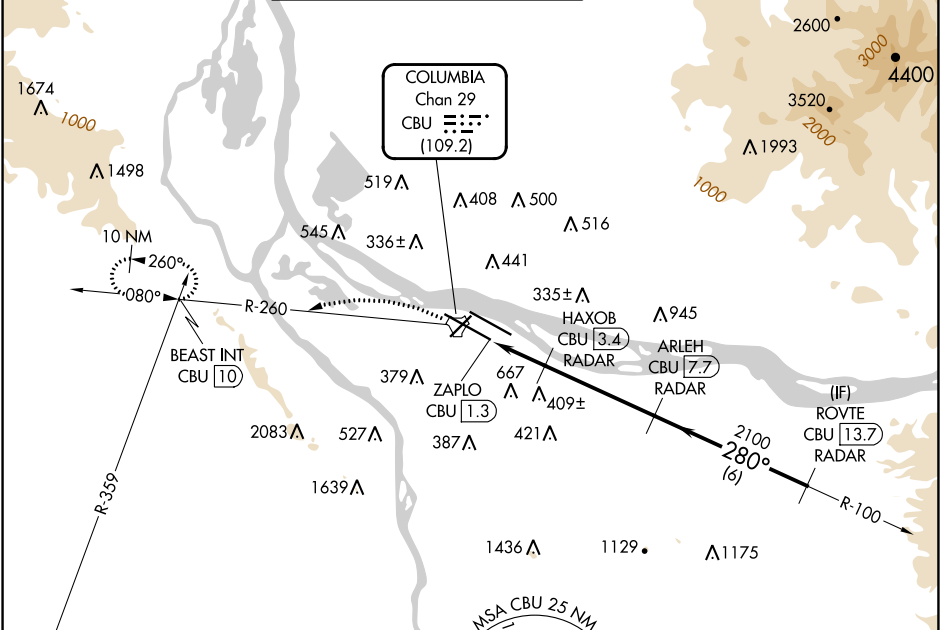


TACAN CBU Chan <b>29</b> <b>(109.2)</b>	APP CRS <b>280°</b>	Rwy ldg TDZE <b>23</b> Apt Elev <b>31</b>
---	------------------------	---

# TACAN RWY 28L

PORTLAND INTL (PDX)

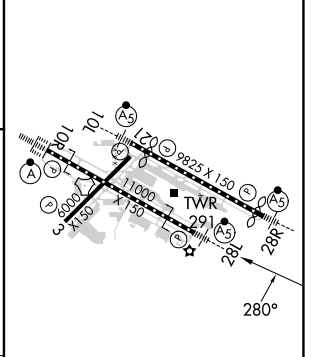
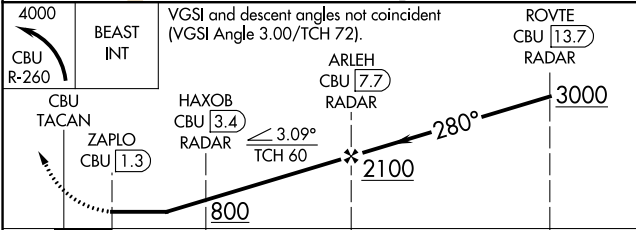
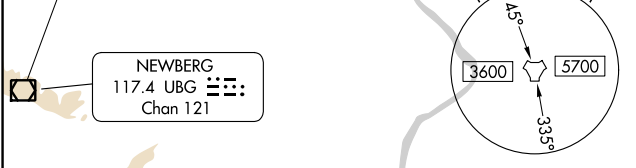
RADAR required for procedure entry.		MALS R	MISSED APPROACH: Climbing left turn to 4000 on CBU TACAN R-260 to BEAST INT/ CBU 10 DME and hold, continue climb-in-hold to 4000.			
For inop ALS, increase S-28L Cat C/D/E visibility to 1 3/4 SM.						
D-ATIS <b>128.35</b> <b>269.9</b>	PORTLAND APP CON <b>124.35 299.2</b>	PORTLAND TOWER Rwy 10L-28R <b>118.7 257.8</b>	Rwys 3-21, 10R-28L <b>123.775 251.125</b>	GND CON <b>121.9 348.6</b>	CLNC DEL <b>120.125 318.1</b>	CPDLC



NW-1, 31 OCT 2024 to 28 NOV 2024

NW-1, 31 OCT 2024 to 28 NOV 2024

ELEV 31	TDZE 23
---------	---------



CATEGORY	A	B	C	D	E
S-28L	660/24	637 (700-1/2)	660-1 3/8	637 (700-1 3/8)	
CIRCLING	740-1 709 (800-1)	760-1 729 (800-1)	1060-3	1029 (1100-3)	1140-3 1109 (1200-3)

REIL Rwys 3 and 21  
TDZ/CL Rwy 10R  
MIRL Rwy 3-21  
HIRL Rwys 10L-28R and 10R-28L