

TMBRS THREE ARRIVAL (RNAV) Transition Routes AL-330 (FAA)

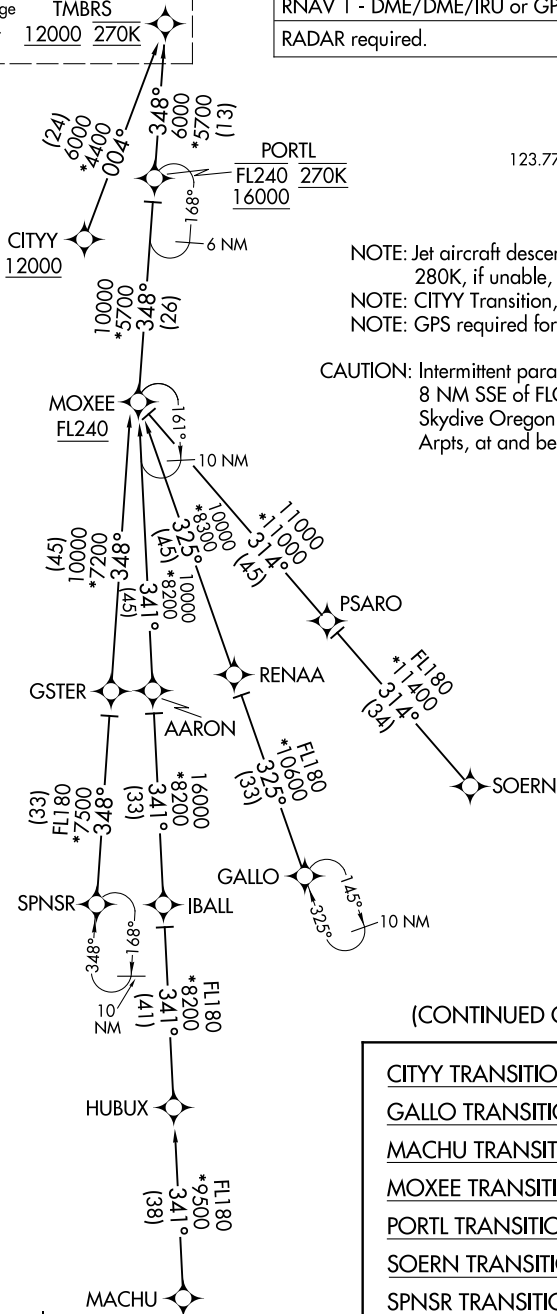
See following page
for arrival routes.

TMBRS
12000 270K

RNAV 1 - DME/DME/IRU or GPS.

RADAR required.

PORTLAND APP CON
124.35 299.2
D-ATIS
128.35 269.9
GND CON
121.9 348.6
PORTLAND TOWER
118.7 257.8 (Rwy 10L-28R)
123.775 251.125 (Rwys 3-21, 10R-28L)



NOTE: Jet aircraft descend via Mach number until 280K, if unable, advise ATC.

NOTE: CITYYY Transition, ATC assigned only.

NOTE: GPS required for CITYYY Transition.

CAUTION: Intermittent parachuting activity within 8 NM SSE of FLOWR in the vicinity of Skydive Oregon (LØ5) and Mulino (459) Arpts, at and below 17500.

EUGENE
EUG

(CONTINUED ON FOLLOWING PAGE)

- CITYY TRANSITION (CITYY.TMBRS3)
- GALLO TRANSITION (GALLO.TMBRS3)
- MACHU TRANSITION (MACHU.TMBRS3)
- MOXEE TRANSITION (MOXEE.TMBRS3)
- PORTL TRANSITION (PORTL.TMBRS3)
- SOERN TRANSITION (SOERN.TMBRS3)
- SPNSR TRANSITION (SPNSR.TMBRS3)

NOTE: Chart not to scale.

TMBRS THREE ARRIVAL (RNAV) Transition Routes

(TMBRS.TMBRS3) 24305

TMBRS THREE ARRIVAL (RNAV) Arrival Routes

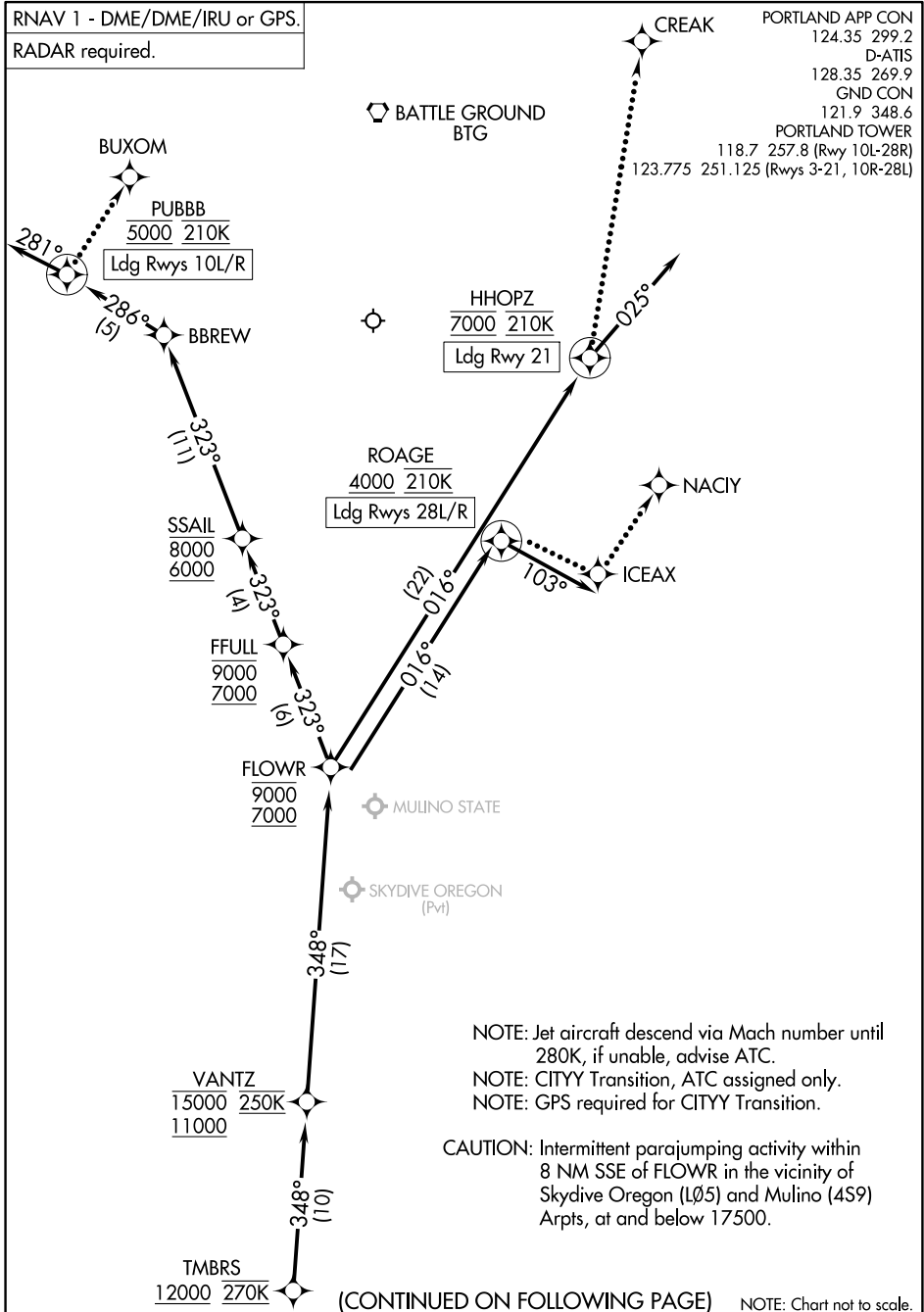
AL-330 (FAA)

PORTLAND INTL (PDX)

PORTLAND, OREGON

RNAV 1 - DME/DME/IRU or GPS.
RADAR required.

PORTLAND APP CON
124.35 299.2
D-ATIS
128.35 269.9
GND CON
121.9 348.6
PORTLAND TOWER
118.7 257.8 (Rwy 10L-28R)
123.775 251.125 (Rwys 3-21, 10R-28L)



NW-1, 31 OCT 2024 to 28 NOV 2024

NW-1, 31 OCT 2024 to 28 NOV 2024

NOTE: Jet aircraft descend via Mach number until 280K, if unable, advise ATC.
NOTE: CITYY Transition, ATC assigned only.
NOTE: GPS required for CITYY Transition.

CAUTION: Intermittent parajumping activity within 8 NM SSE of FLOWR in the vicinity of Skydive Oregon (LØ5) and Mulino (459) Arpts, at and below 17500.

(CONTINUED ON FOLLOWING PAGE) NOTE: Chart not to scale.

TMBRS THREE ARRIVAL (RNAV) Arrival Routes

(TMBRS.TMBRS3) 31OCT24

PORTLAND, OREGON
PORTLAND INTL (PDX)

ARRIVAL ROUTE DESCRIPTION

From TMBRS on track 348° to cross VANTZ between 11000 and 15000 and at 250K, then on track 348° to cross FLOWR between 7000 and 9000.

LANDING RUNWAYS 10L/R: From FLOWR on track 323° to cross FFULL between 7000 and 9000, then on track 323° to cross SSAIL between 6000 and 8000, then on track 323° to BBREW, then on track 286° to cross PUBBB at 5000 and at 210K, then on track 281°. Expect RADAR vectors to final approach course.

LANDING RUNWAY 21: From FLOWR on track 016° to cross HHOPZ at 7000 and at 210K, then on track 025°. Expect RADAR vectors to final approach course.

LANDING RUNWAYS 28L/R: From FLOWR on track 016° to cross ROAGE at or above 4000 and at 210K, then on track 103°. Expect RADAR vectors to final approach course.

LOST COMMUNICATIONS

Maintain Rwy transition terminus altitude until established on approach procedure.

RUNWAYS 10L/R: After PUBBB turn right to BUXOM and proceed on the ILS or LOC RWY 10L approach.

RUNWAY 21: After HHOPZ, turn left to CREAK and proceed on the LOC/DME RWY 21 approach.

RUNWAYS 28L/R: After ROAGE, proceed to ICEAX, then to NACIY and proceed on the ILS or LOC RWY 28R approach.

NW-1, 31 OCT 2024 to 28 NOV 2024

NW-1, 31 OCT 2024 to 28 NOV 2024