

RAPID CITY, SOUTH DAKOTA

# HI-TACAN Z RWY 31

TACAN RCA Chan <b>25</b>	APCH CRS <b>302°</b>	Rwy ldg <b>13,497</b> TDZE <b>3192</b> Arprt Elev <b>3276</b>
-----------------------------	-------------------------	---

[USAF]

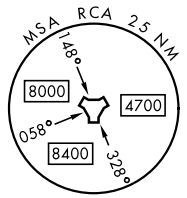
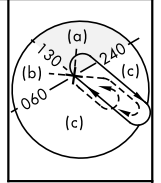
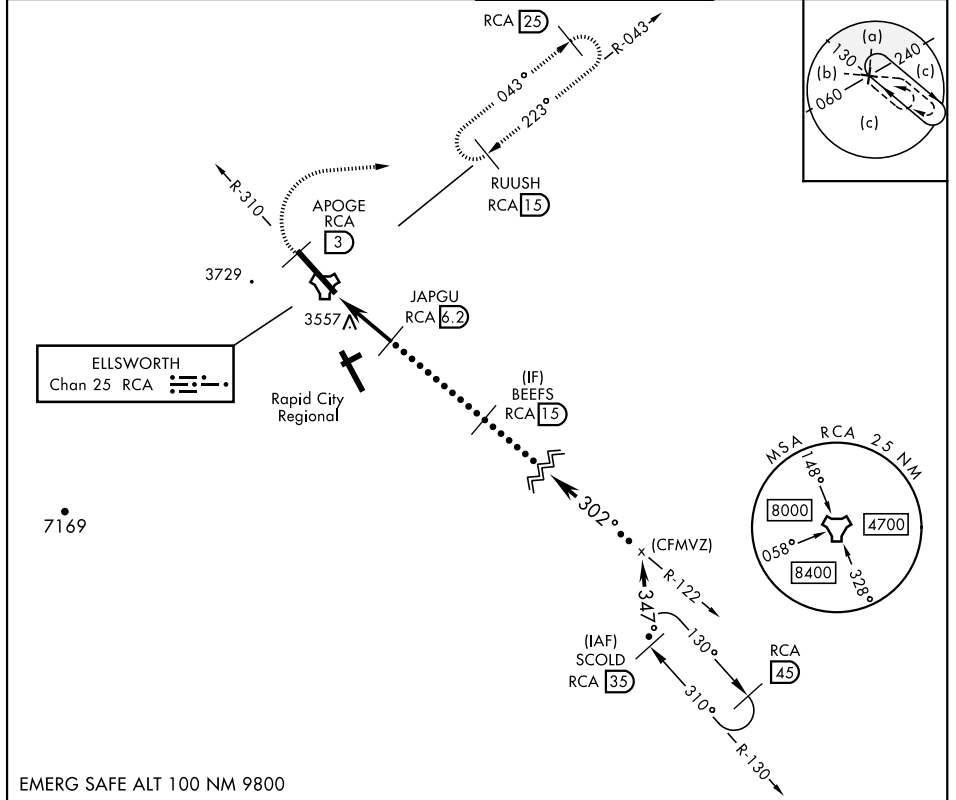
ELLSWORTH AFB (KRCA)

▼ \* When ALS inop, increase CAT CDE vis to 1 3/4 mile.  
 \*\* CAT E circling restricted to 28th BW aircraft only; 28th BW aircraft will remain within Class D airspace.



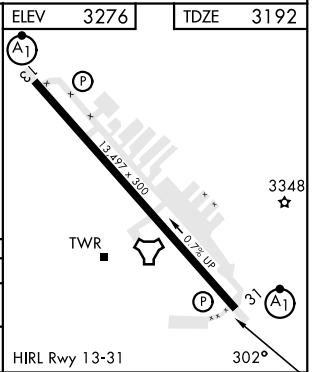
MISSED APPROACH: Track outbound RCA R-310 to 3 DME (APOGE), then turn right to join RCA R-043 to 15 DME (RUUSH) and hold. Maintain 6000.

ATIS ★ <b>120.625 269.9</b>	APP CON <b>119.5 259.1</b>	TOWER ★ <b>126.05 253.5</b>	GND CON <b>121.8 275.8</b>
--------------------------------	-------------------------------	--------------------------------	-------------------------------



EMERG SAFE ALT 100 NM 9800

APOGE RCA R-310 (3)	6000	RUUSH RCA (15)	SCOLD RCA (35)
RCA TACAN	RCA (2.6)	JAPGU RCA (6.2)	BEEFS RCA (15)
IYODO RCA (1.3)	5000	Intcp R-122 (CFMVZ)	FL180
0.5	4.9 NM	302°	347°
CATEGORY	C	D	E
S-31*	3820-1 1/8	628	(600-1 1/8)
CIRCLING**	3880-1 1/8 604 (700-1 1/8)	3980-2 1/4 704 (800-2 1/4)	4040-2 3/4 764 (800-2 3/4)



RAPID CITY, SOUTH DAKOTA

44°09'N-103°06'W

ELLSWORTH AFB (KRCA)

Amdt 1 15SEP16

# HI-TACAN Z RWY 31

NC-1, 31 OCT 2024 to 28 NOV 2024

NC-1, 31 OCT 2024 to 28 NOV 2024