

# TACAN Y RWY 13

TACAN RCA Chan <b>25</b>	APCH CRS <b>136°</b>	Rwy ldg <b>13,497</b> TDZE <b>3276</b> Arprt Elev <b>3276</b>
-----------------------------	-------------------------	---

[USAF]

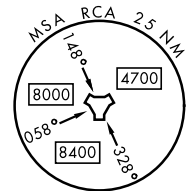
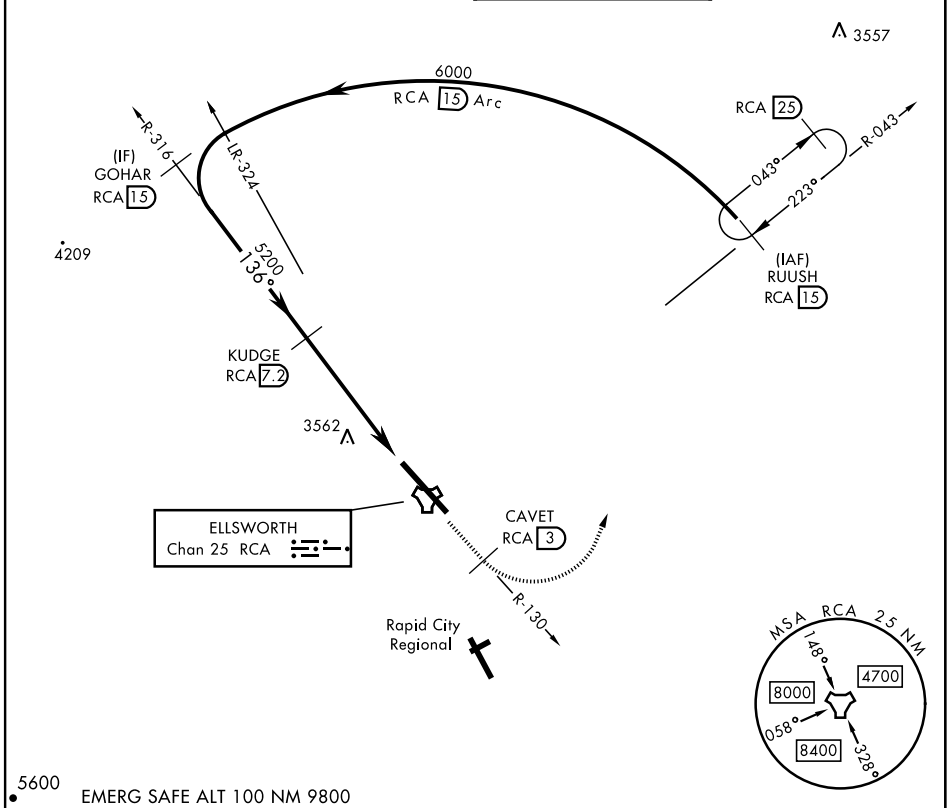
ELLSWORTH AFB (KRCA)

▼ \*When ALS inop, increase CAT AB RVR to 55 and vis to 1 mile, CAT CDE vis to 1 $\frac{1}{2}$  miles.  
 \*\*CAT E circling restricted to 28th BW aircraft only; 28th BW aircraft will remain within Class D airspace.

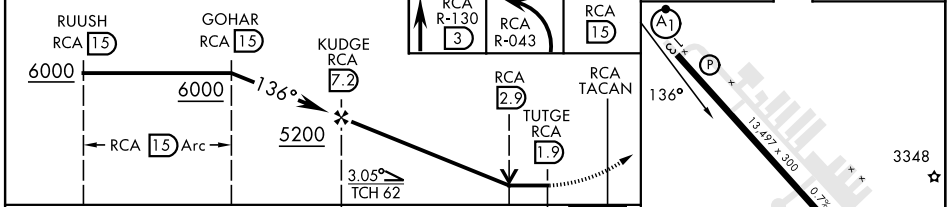


**MISSED APPROACH:** Track outbound RCA R-130 to 3 DME (CAVET), then turn left to join RCA R-043 to RCA 15 DME (RUUSH) and hold. Maintain 6000.

ATIS ★ <b>120.625 269.9</b>	APP CON <b>119.5 259.1</b>	TOWER ★ <b>126.05 253.5</b>	GND CON <b>121.8 275.8</b>
--------------------------------	-------------------------------	--------------------------------	-------------------------------



EMERG SAFE ALT 100 NM 9800



CATEGORY	A	B	C	D	E
	3820/24	544 (600- $\frac{1}{2}$ )	3820/60	544	(600-1 $\frac{1}{2}$ )
CIRCLING **	3860-1	3880-1	3880-1 $\frac{3}{4}$	3980-2 $\frac{1}{4}$	4040-2 $\frac{3}{4}$
	584 (600-1)	604 (700-1)	604 (700-1 $\frac{3}{4}$ )	704 (800-2 $\frac{1}{4}$ )	764 (800-2 $\frac{3}{4}$ )

# TACAN Y RWY 13

NC-1, 31 OCT 2024 to 28 NOV 2024

NC-1, 31 OCT 2024 to 28 NOV 2024