

WAAS CH 42609 W33A	APP CRS 331°	Rwy Idg TDZE Apt Elev	5431 352 352
--	------------------------	-----------------------------	---

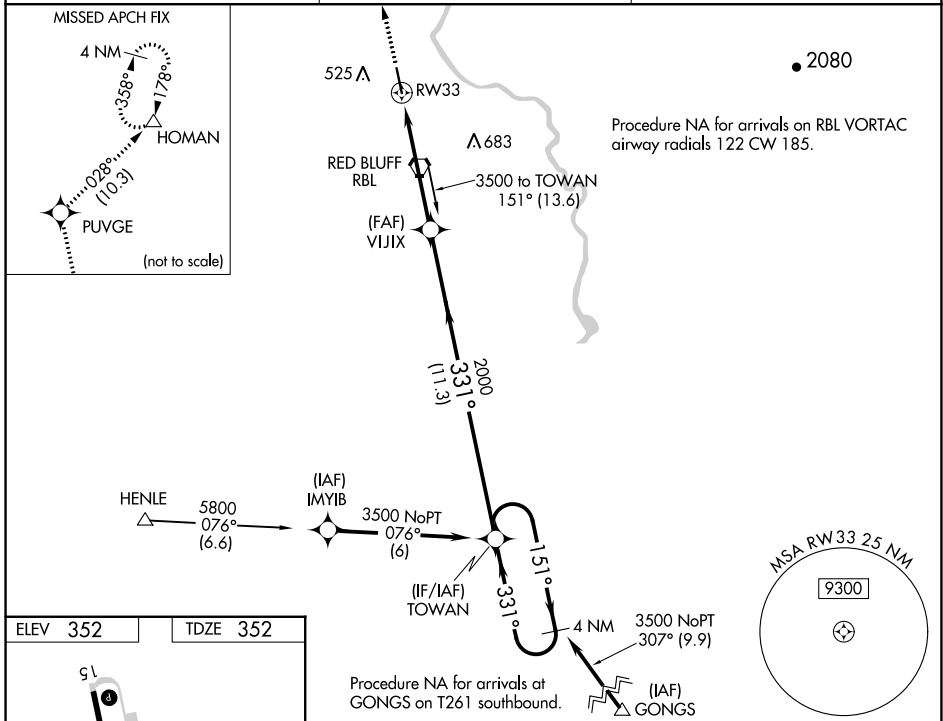
RNAV (GPS) RWY 33

RED BLUFF MUNI (RBL)

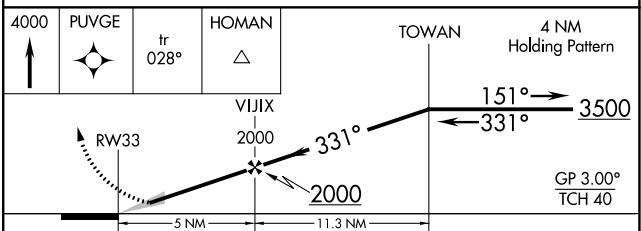
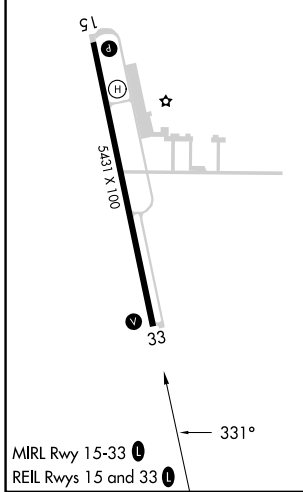
⚠ Baro-VNAV NA when using Redding altimeter setting. For uncompensated Baro-VNAV systems, LNAV/VNAV NA below -15°C (5°F) or above 48°C (118°F). DME/DME RNP-0.3 NA. When local altimeter setting not received, use Redding altimeter setting and increase all DA/MDA 80 feet and increase LPV all Cats visibility ¼ SM, LNAV/VNAV all Cats visibility ¼ SM, LNAV Cat C visibility ¼ SM and Circling Cats C and D visibility ¼ SM.

MISSSED APPROACH: Climb to 4000 direct PUVGE and track 028° to HOMAN and hold.

ASOS 120.775	OAKLAND CENTER 132.2 350.3	UNICOM 123.0 (CTAF) 📻
------------------------	--------------------------------------	--



ELEV 352	TDZE 352
----------	----------



CATEGORY	A	B	C	D
LPV DA	602-1 250 (300-1)			
LNAV/VNAV DA	718-1¼ 366 (400-1¼)			
LNAV MDA	780-1 428 (500-1)	780-1¼ 428 (500-1¼)	780-1½ 428 (500-1½)	780-1½ 428 (500-1½)
📻 CIRCLING	860-1 508 (600-1)	900-1½ 548 (600-1½)	1060-2¼ 708 (800-2¼)	

SW-2, 31 OCT 2024 to 28 NOV 2024

SW-2, 31 OCT 2024 to 28 NOV 2024