

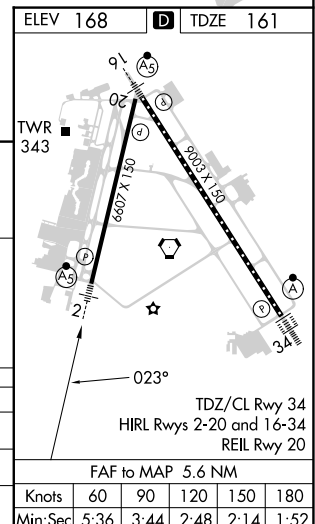
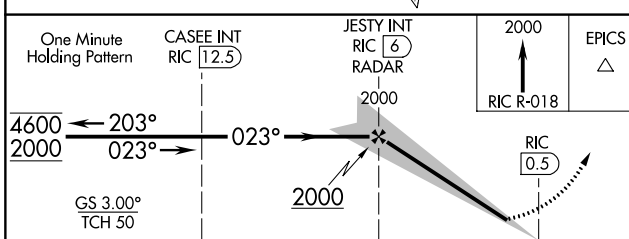
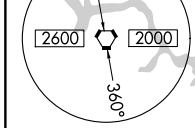
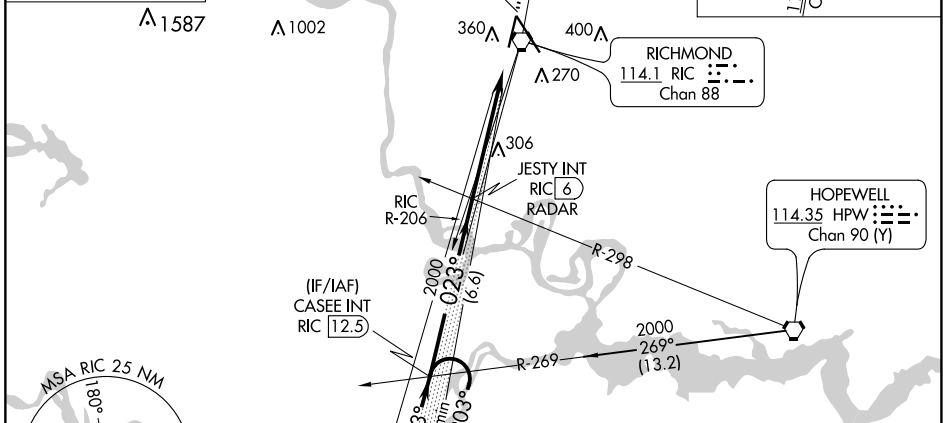
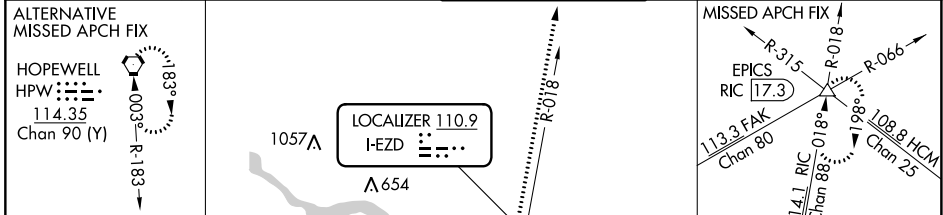
LOC I-EZD 110.9	APP CRS 023°	Rwy Idg TDZE Apt Elev	6607 161 168
---------------------------	------------------------	-----------------------------	---

ILS or LOC RWY 2

RICHMOND INTL (RIC)

<p>▽ Rwy 2 helicopter visibility reduction below ¾ SM NA. For inop ALS, increase S-ILS 2 all Cats visibility to ¾ SM and S-LOC 2 Cats A and B visibility to 1 SM.</p>	<p>MALSRL </p>	<p>MISSED APPROACH: Climb to 2000 on RIC VORTAC R-018 to EPICS INT/ RIC 17.3 DME and hold.</p>
--	--------------------	--

<p>ATIS 119.15 263.025</p>	<p>POTOMAC APP CON 126.4 282.375 (001°-185°) 126.75 307.2 (186°-360°)</p>	<p>RICHMOND TOWER 121.1 257.8</p>	<p>GND CON 121.9 348.6</p>	<p>CLNC DEL 127.55 348.6</p>
---------------------------------------	---	--	---------------------------------------	---



CATEGORY	A	B	C	D
S-ILS 2		457-¾ 296 (300-¾)		
S-LOC 2		560-¾ 399 (400-¾)		
C CIRCLING	660-1 492 (500-1)		700-1½ 532 (600-1½)	720-2 552 (600-2)

FAF to MAP 5.6 NM					
Knots	60	90	120	150	180
Min:Sec	5:36	3:44	2:48	2:14	1:52

NE-3, 31 OCT 2024 to 28 NOV 2024

NE-3, 31 OCT 2024 to 28 NOV 2024