

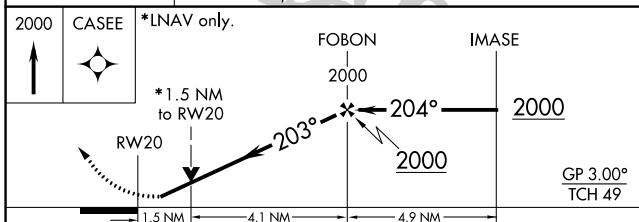
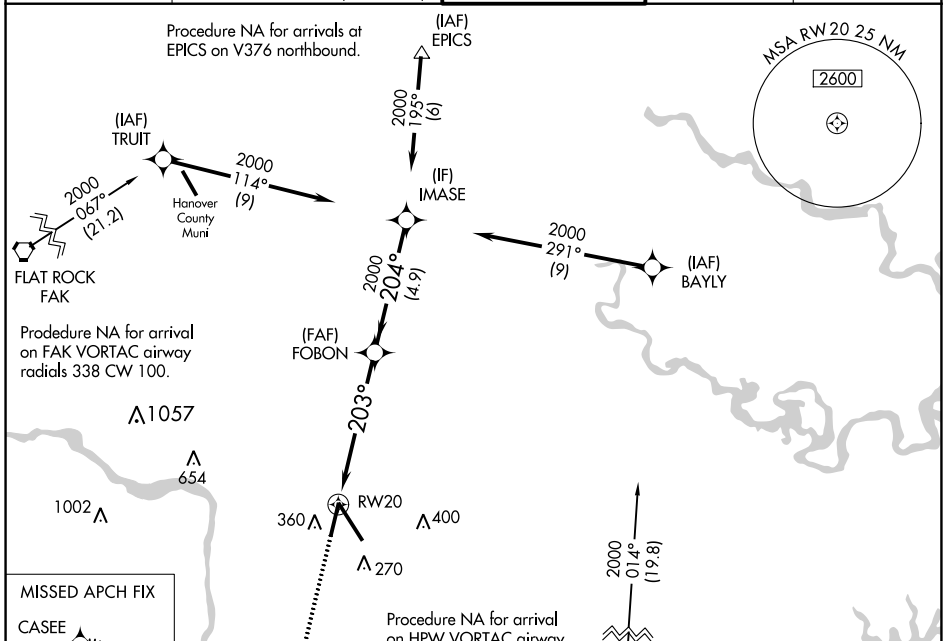
WAAS CH <b>69320</b> <b>W20A</b>	APP CRS <b>203°</b>	Rwy Idg TDZE <b>168</b> Apt Elev <b>168</b>
--	------------------------	---

# RNAV (GPS) Z RWY 20

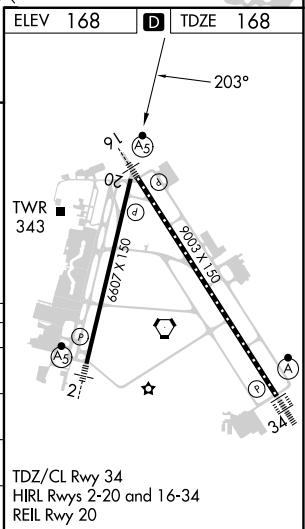
RICHMOND INTL (RIC)

RNP APCH.	MISSED APPROACH: Climb to 2000 direct CASEE and hold.
-----------	--

ATIS <b>119.15 263.025</b>	POTOMAC APP CON <b>126.4 282.375</b> (001°-185°) <b>126.75 307.2</b> (186°-360°)	RICHMOND TOWER <b>121.1 257.8</b>	GND CON <b>121.9 348.6</b>	CLNC DEL <b>127.55 348.6</b>
-------------------------------	--	--------------------------------------	-------------------------------	---------------------------------



CATEGORY	A	B	C	D
LPV DA		464- $\frac{7}{8}$	296 (300- $\frac{7}{8}$ )	
RNAV/VNAV DA		603-1 $\frac{1}{2}$	435 (500-1 $\frac{1}{2}$ )	
RNAV MDA	680-1	512 (600-1)	680-1 $\frac{3}{8}$	512 (600-1 $\frac{3}{8}$ )
<b>C</b> CIRCLING	680-1	512 (600-1)	700-1 $\frac{1}{2}$ 532 (600-1 $\frac{1}{2}$ )	720-2 552 (600-2)



NE-3, 31 OCT 2024 to 28 NOV 2024

NE-3, 31 OCT 2024 to 28 NOV 2024