

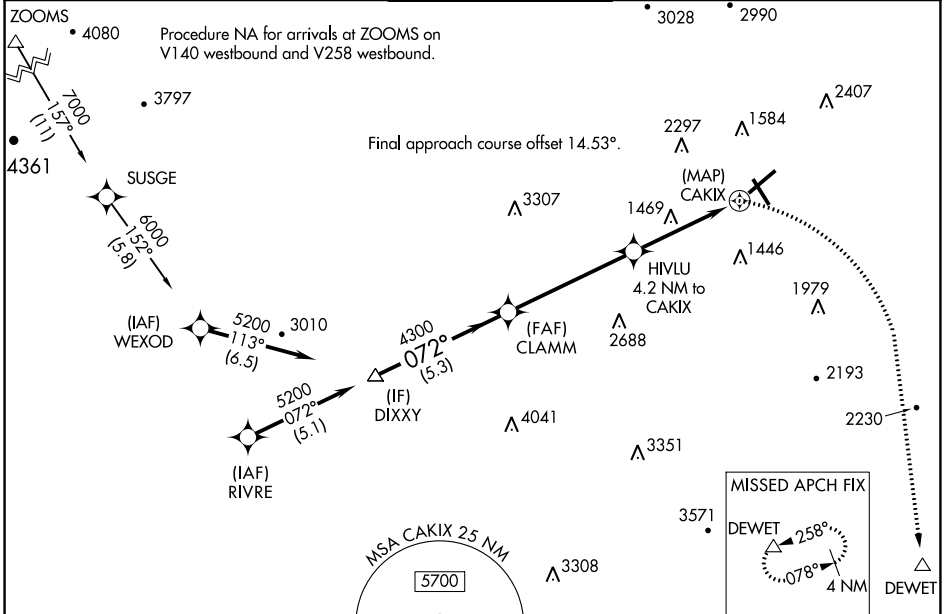
APP CRS	Rwy Idg	6800
072°	TDZE	1175
	Apt Elev	1175

RNAV (GPS) Y RWY 6

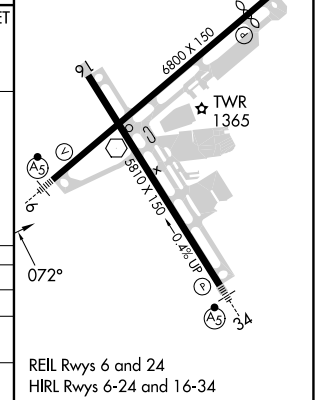
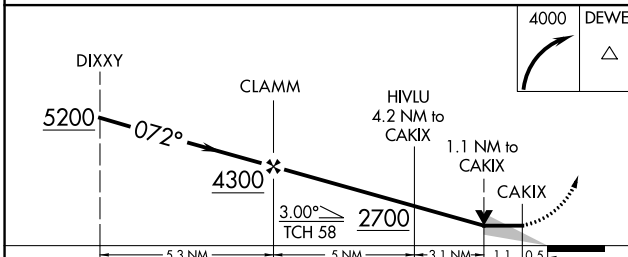
ROANOKE/BLACKSBURG RGNL (WOODRUM FLD) (R.O.A)

RNP APCH - GPS.		MALSR	MISSED APPROACH: Climbing right turn to 4000 direct DEWET and hold. ** Misted approach requires minimum climb of 276 feet per NM to 2700.	
<p>Circling NA northwest of Rwy 6-24. For inop ALS, increase LNAV Cat C and D visibility to 2 1/2 SM.</p>				
-13°C				

ATIS	ROANOKE APP CON	ROANOKE TOWER	GND CON	CLNC DEL
132.375	126.9 339.8	118.3 257.8	121.9 257.8	119.7



ELEV 1175	D	TDZE 1175
-----------	----------	-----------



CATEGORY	A	B	C	D
LNAV MDA**	1720-1/2	545 (600-1/2)	1720-1 1/8	545 (600-1 1/8)
LNAV MDA	1980-1/2 805 (900-1/2)	1980-3/4 805 (900-3/4)	1980-1 7/8	805 (900-1 7/8)
C CIRCLING	1980-1 805 (900-1)	1980-1 1/4 805 (900-1 1/4)	2460-3 1285 (1300-3)	2800-3 1625 (1700-3)

REIL Rwy 6 and 24
HIRL Rwy 6-24 and 16-34

NE-3, 31 OCT 2024 to 28 NOV 2024

NE-3, 31 OCT 2024 to 28 NOV 2024