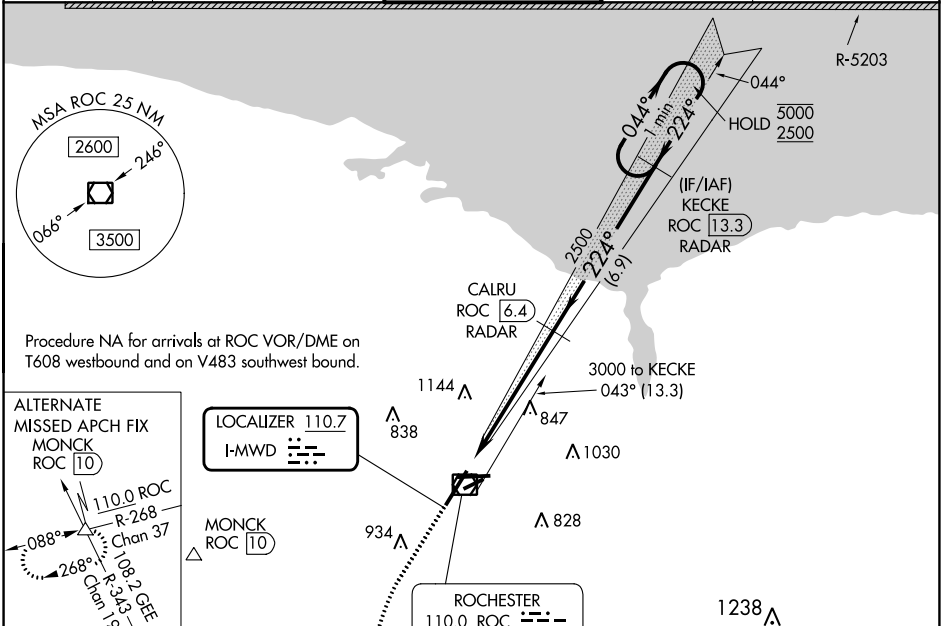


LOC I-MWD 110.7	APP CRS 224°	Rwy Idg 8001
		TDZE 559
		Apt Elev 559

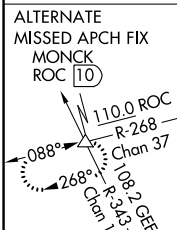
ILS or LOC RWY 22

FREDERICK DOUGLASS/GREATER ROCHESTER INTL (ROC)

DME or RADAR required.		MALSR	MISSED APPROACH: Climb to 1000 then climbing left turn to 4000 direct GEE VOR/DME and hold.		
<p>▼ When R-5203 active hold in lieu NA. DME from ROC VOR/DME. ▲ DME use requires simultaneous reception of I-MWD and ROC DME. * RVR 1800 authorized with use of FD or AP or HUD to DA.</p>					
ATIS 124.825	ROCHESTER APP CON 119.55 269.6	ROCHESTER TOWER 118.3 254.3	GND CON 121.7	CLNC DEL 118.8 343.65	

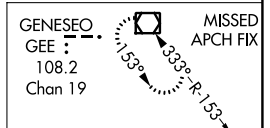


Procedure NA for arrivals at ROC VOR/DME on T608 westbound and on V483 southwest bound.

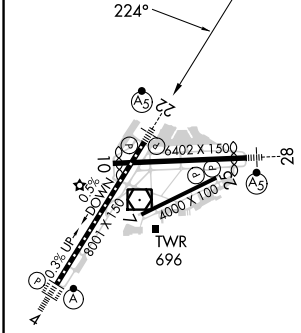


LOCALIZER 110.7 I-MWD

MONCK ROC 10



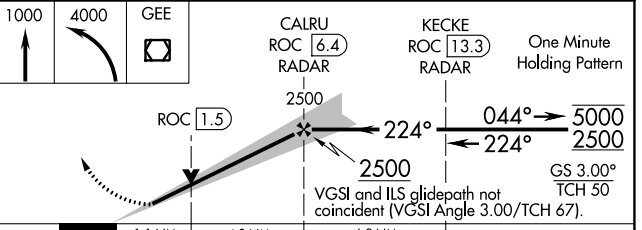
ELEV 559	D	TDZE 559
----------	----------	----------



TDZ/CL Rwy 4
REIL Rwys 7, 10 and 25
MIRL Rwy 7-25
HIRL Rwys 4-22 and 10-28

FAF to MAP 5.9 NM

Knots	60	90	120	150	180
Min:Sec	5:54	3:56	2:57	2:22	1:58



CATEGORY	A	B	C	D
S-ILS 22 *	759/24 200 (200-½)			
S-LOC 22	980/24	421 (500-½)	980/40	421 (500-¾)
CIRCLING	1060-1	501 (600-1)	1460-2¾ 901 (1000-2¾)	1460-3 901 (1000-3)

NE-2, 31 OCT 2024 to 28 NOV 2024

NE-2, 31 OCT 2024 to 28 NOV 2024