

LOC/DME I-ROC 109.5 Chan 32	APP CRS 280°	Rwy Idg 5802 TDZE 550 Apt Elev 559
---	------------------------	---

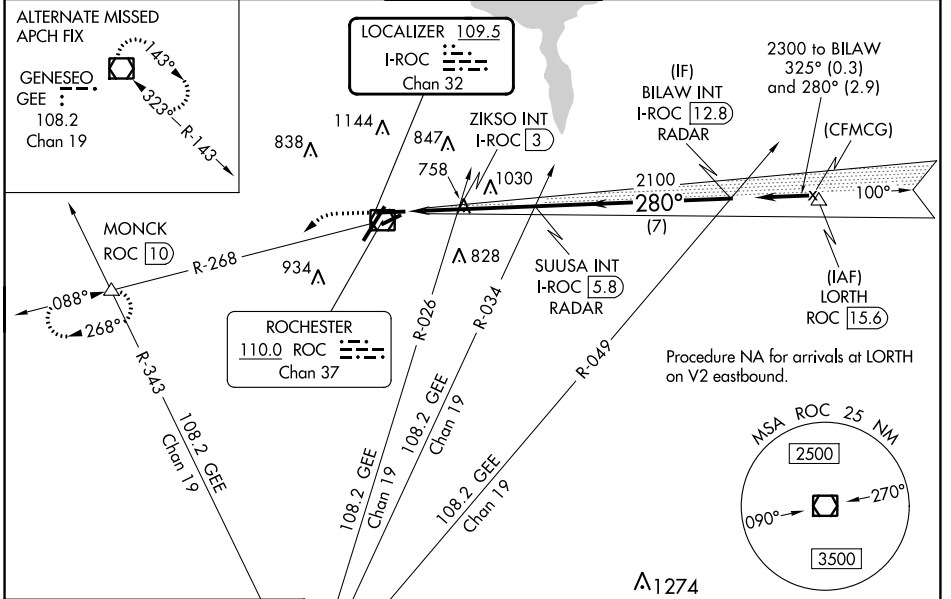
ILS or LOC RWY 28

FREDERICK DOUGLASS/GREATER ROCHESTER INTL (ROC)

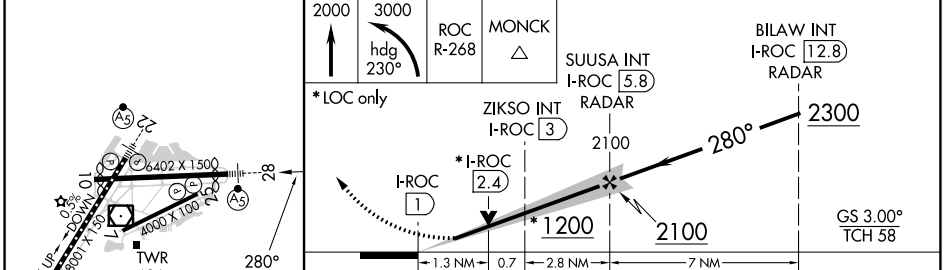
⚠ Helicopter visibility reduction below RVR 4000 NA.
⚠ Multiple unshielded lights in final approach area.
 For inop MALS, increase S-ILS 28 all Cats visibility to RVR 4500 and S-LOC 28 Cat A/B visibility to RVR 5500. For inop MALS with ZIKSO fix minimums, increase S-LOC 28 Cat A/B visibility to RVR 5500 and Cat C/D visibility to 1 1/2%.

MALS  MISSED APPROACH: Climb to 2000 then climbing left turn to 3000 on heading 230° and ROC VOR/DME R-268 to MONCK INT/ROC 10 DME and hold.

ATIS 124.825	ROCHESTER APP CON 119.55 269.6	ROCHESTER TOWER 118.3 254.3	GND CON 121.7	CLNC DEL 118.8 343.65
------------------------	--	---------------------------------------	-------------------------	---------------------------------



ELEV 559	D	TDZE 550
----------	----------	----------



CATEGORY	A	B	C	D
S-ILS 28	821/40 271 (300-3/4)			
S-LOC 28	1200/40	650 (700-3/4)	1200-1 1/2	650 (700-1 1/2)
C CIRCLING	1200-1	641 (700-1)	1500-2 3/4 941 (1000-2 3/4)	1500-3 941 (1000-3)
ZIKSO FIX MINIMUMS (DUAL VOR RECEIVERS OR DME REQUIRED)				
S-LOC 28	1020/40	470 (500-3/4)	1020/50	470 (500-1)
C CIRCLING	1060-1	501 (600-1)	1500-2 3/4 941 (1000-2 3/4)	1500-3 941 (1000-3)

FAF to MAP 4.7 NM					
Knots	60	90	120	150	180
Min:Sec	4:42	3:08	2:21	1:53	1:34

ILS or LOC RWY 28

NE-2, 31 OCT 2024 to 28 NOV 2024

NE-2, 31 OCT 2024 to 28 NOV 2024