

LOC I-MCU 110.7	APP CRS 044°	Rwy ldg TDZE Apt Elev	8001 535 559
---------------------------	------------------------	-----------------------------	---

ILS or LOC RWY 4

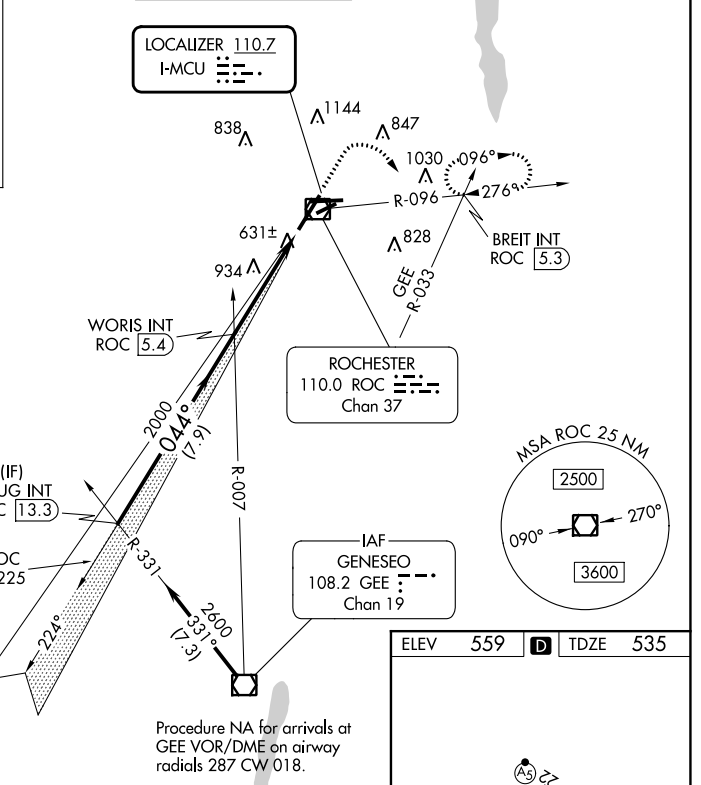
FREDERICK DOUGLASS/GREATER ROCHESTER INTL (ROC)

	ALSF-2	MISSED APPROACH: Climb to 1100 then climbing right turn to 3000 on heading 135° and ROC VOR/DME R-096 to BREIT INT/ROC 5.3 DME and hold, continue climb-in-hold to 3000.

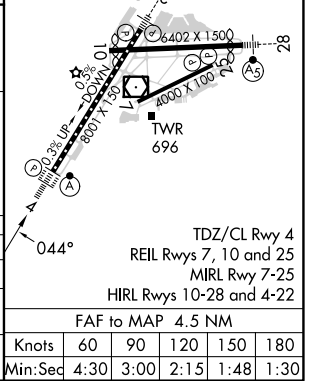
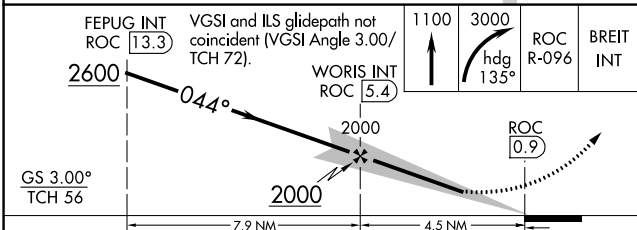
ATIS 124.825	ROCHESTER APP CON 119.55 269.6	ROCHESTER TOWER 118.3 254.3	GND CON 121.7	CLNC DEL 118.8 343.65
------------------------	--	---------------------------------------	-------------------------	---------------------------------

ALTERNATE MISSED APCH FIX

GENESECO
GEE
108.2
Chan 19



Procedure NA for arrivals at GEE VOR/DME on airway radials 287 CW 018.



CATEGORY	A		B		C		D	
	735/18		200 (200-1/2)		920/35		385 (400-3/4)	
S-ILS 4	735/18		200 (200-1/2)		920/35		385 (400-3/4)	
S-LOC 4	920/24	385 (400-1/2)		920/35		385 (400-3/4)		
CIRCLING	1060-1 501 (600-1)		1500-2 3/4 941 (1000-2 3/4)		1500-3 941 (1000-3)			

Knots	60	90	120	150	180
	Min:Sec	4:30	3:00	2:15	1:48

ILS or LOC RWY 4

NE-2, 31 OCT 2024 to 28 NOV 2024

NE-2, 31 OCT 2024 to 28 NOV 2024