

VOR/DME ROC <b>110.0</b> Chan <b>37</b>	APP CRS <b>052°</b>	Rwy Idg <b>8001</b> TDZE <b>535</b> Apt Elev <b>559</b>
---	------------------------	---

# VOR RWY 4

FREDERICK DOUGLASS/GREATER ROCHESTER INTL (ROC)

**⚠** For inop ALSF-2, increase S-4 Cat A visibility to RVR 5000, increase Cats C/D visibility to 2. Helicopter visibility reduction below RVR 4000 NA.

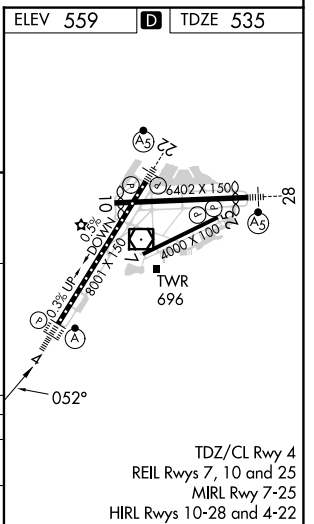
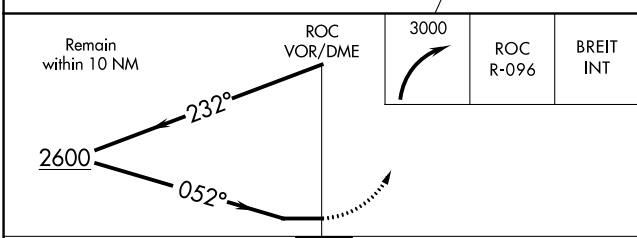
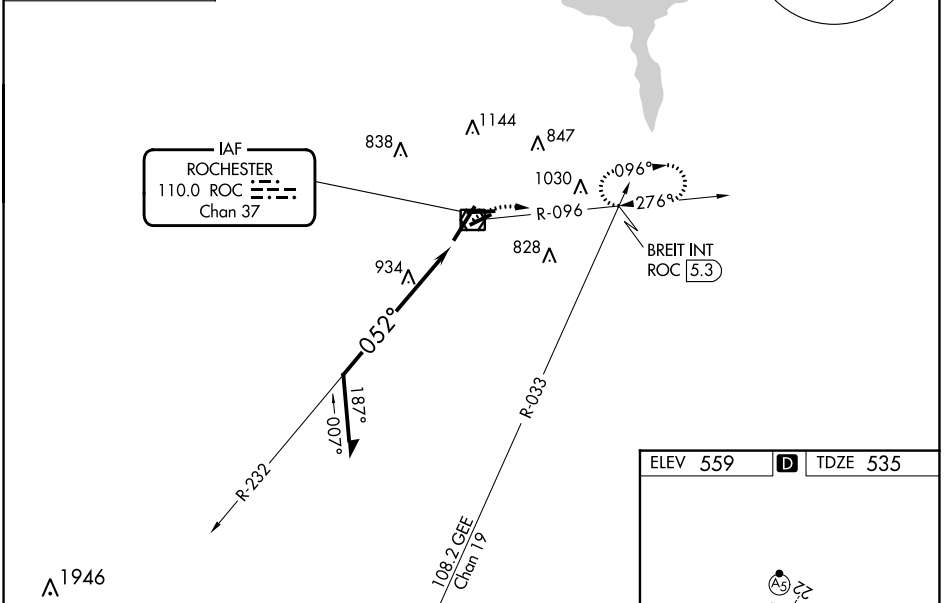
**ALSF-2**

**MISSED APPROACH:** Climbing right turn to 3000 on ROC VOR/DME R-096 to BREIT INT/ROC 5.3 DME and hold, continue climb-in-hold to 3000.

ATIS <b>124.825</b>	ROCHESTER APP CON <b>119.55 269.6</b>	ROCHESTER TOWER <b>118.3 254.3</b>	GND CON <b>121.7</b>	CLNC DEL <b>118.8 343.65</b>
------------------------	--	---------------------------------------	-------------------------	---------------------------------

GENESEO  
GEE  
108.2  
Chan 19

ALTERNATE  
MISSED APCH FIX



CATEGORY	A	B	C	D
S-4	1280/40	745 (800-3/4)	1280-1 3/4	745 (800-1 3/4)
<b>C</b> CIRCLING	1280-1 721 (800-1)	1280-1 1/4 721 (800-1 1/4)	1500-2 3/4 941 (1000-2 3/4)	1500-3 941 (1000-3)

NE-2, 31 OCT 2024 to 28 NOV 2024

NE-2, 31 OCT 2024 to 28 NOV 2024

TDZ/CL Rwy 4  
REIL Rwys 7, 10 and 25  
MIRL Rwy 7-25  
HIRL Rwys 10-28 and 4-22