

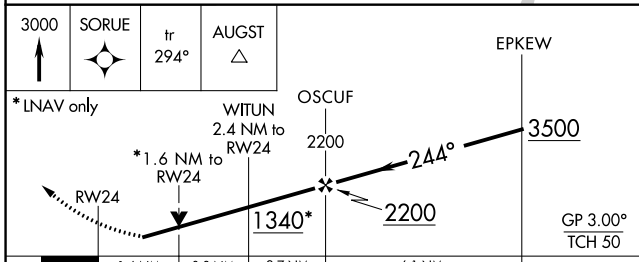
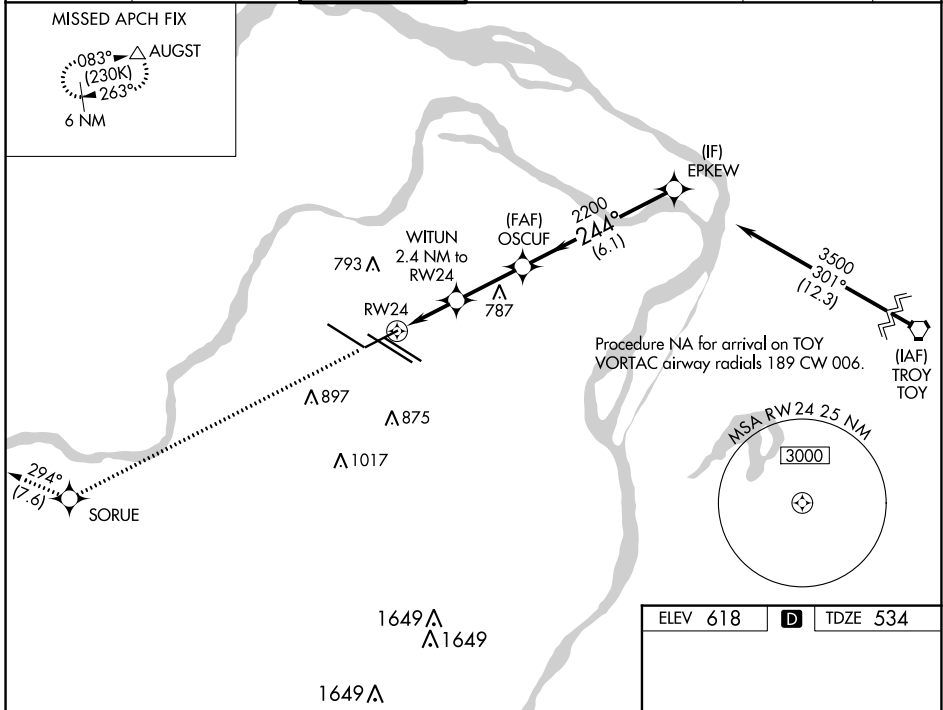
WAAS CH <b>87021</b> <b>W24A</b>	APP CRS <b>244°</b>	Rwy Idg TDZE <b>534</b> Apt Elev <b>618</b>	<b>7603</b>
--	------------------------	---	-------------

# RNAV (GPS) RWY 24

ST LOUIS LAMBERT INTL (STL)

<p><b>▽</b> For uncompensated Baro-VNAV systems, LNAV/VNAV NA below -16°C (4°F) or above 54°C (130°F). Rwy 24 helicopter visibility reduction below ¼ SM NA. DME/DME RNP-0.3 NA. For inop ALS, increase LNAV/VNAV all Cats visibility to 1½ and LNAV Cats C, D and E visibility to 1½.</p>	<p>MALS</p>	<p>MISSED APPROACH: Climb to 3000 direct SORUE and on track 294° to AUGST and hold.</p>
--	-------------	---

D-ATIS <b>125.025</b> <b>379.925</b>	ST. LOUIS APP CON <b>132.125 360.6</b>	ST. LOUIS TOWER <b>120.05 284.6</b>	GND CON <b>121.9 348.6</b> (Inbound) <b>121.65 377.175</b> (Outbound) <b>118.925 227.125</b> (Rwy 11/29)	CLNC DEL <b>119.5 363.1</b>	CPDLC
--	---	--	---	--------------------------------	-------



ELEV 618	<b>D</b>	TDZE 534
----------	----------	----------

Rwy 6-24 7603 X 150  
Rwy 11-29 9000 X 150  
Rwy 12L-30R 9013 X 150  
Rwy 12R-30L 11020 X 150

HIRL all Rwys  
TDZ/CL Rwys 11, 12L, 12R, 29, and 30R

CATEGORY	A	B	C	D	E
LPV DA	734/40		200 (200-¾)		
LNAV/VNAV DA	931/50		397 (400-1)		
LNAV MDA	1080/40 546 (500-¾)		1080-1¾		546 (500-1¾)

NC-3, 31 OCT 2024 to 28 NOV 2024

NC-3, 31 OCT 2024 to 28 NOV 2024