

|             |          |             |
|-------------|----------|-------------|
| APP CRS     | Rwy Idg  | <b>7323</b> |
| <b>064°</b> | TDZE     | <b>551</b>  |
|             | Apt Elev | <b>618</b>  |


# RNAV (GPS) RWY 6

ST LOUIS LAMBERT INTL (STL)

RNP APCH.

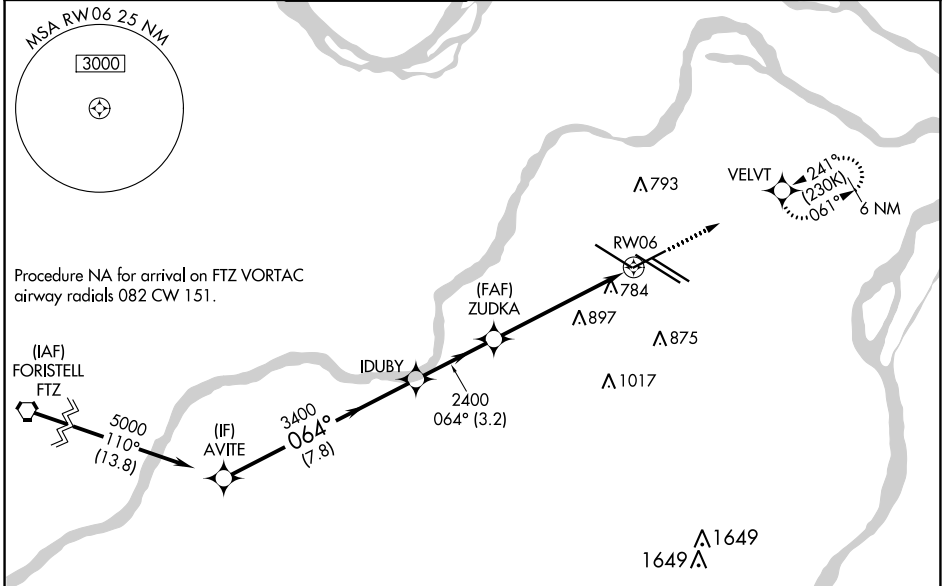
▼ WAAS VNAV NA. For uncompensated Baro-VNAV systems, LNAV/VNAV NA below -18°C or above 54°C. For inop ALS increase LNAV/VNAV Cat E visibility to 1 1/2 SM and LNAV Cats C/D/E visibility to 1 3/8 SM.

MALSR



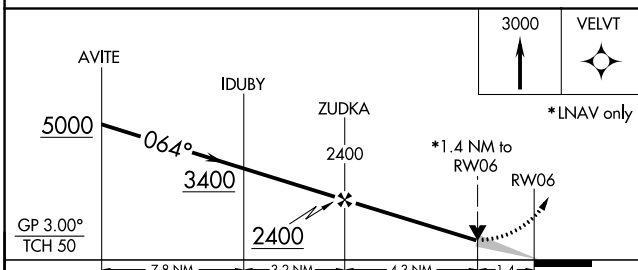
MISSED APPROACH: Climb to 3000 direct VELVT and hold, continue climb-in-hold to 3000.

|                |                      |                        |                                    |                    |       |
|----------------|----------------------|------------------------|------------------------------------|--------------------|-------|
| D-ATIS         | ST. LOUIS APP CON    | ST. LOUIS TOWER        | GND CON                            | CLNC DEL           | CPDLC |
| <b>125.025</b> | <b>132.125 360.6</b> | <b>132.475 239.275</b> | <b>121.9 348.6</b> (Inbound)       | <b>119.5 363.1</b> |       |
| <b>379.925</b> |                      |                        | <b>121.65 377.175</b> (Outbound)   |                    |       |
|                |                      |                        | <b>118.925 227.125</b> (Rwy 11/29) |                    |       |



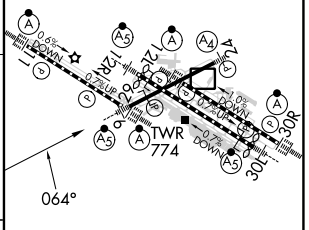
Procedure NA for arrival on FTZ VORTAC airway radials 082 CW 151.

|          |                   |
|----------|-------------------|
| ELEV 618 | <b>D</b> TDZE 551 |
|----------|-------------------|



Rwy 6-24 7603 X 150  
 Rwy 11-29 9000 X 150  
 Rwy 12L-30R 9013 X 150  
 Rwy 12R-30L 11020 X 150

|              |                         |   |                     |   |   |
|--------------|-------------------------|---|---------------------|---|---|
| CATEGORY     | A                       | B | C                   | D | E |
| LNAV/VNAV DA | 1103/60 552 (500-1 1/4) |   |                     |   |   |
| LNAV MDA     | 1040/24 489 (500-1/2)   |   | 1040/50 489 (500-1) |   |   |



HIRL all Rwys  
 TDZ/CL Rwys 11, 12L, 12R, 29, and 30R

NC-3, 31 OCT 2024 to 28 NOV 2024

NC-3, 31 OCT 2024 to 28 NOV 2024