

APP CRS	Rwy Idg	<b>9000</b>
<b>123°</b>	TDZE	<b>618</b>
	Apt Elev	<b>618</b>

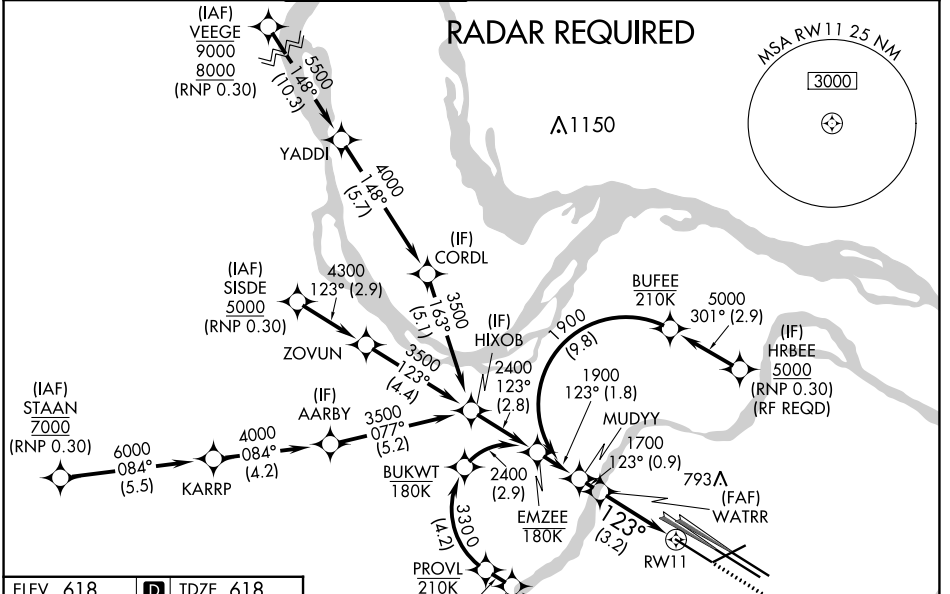
# RNAV (RNP) Z RWY 11

ST LOUIS LAMBERT INTL (STL)

**V** For uncompensated Baro-VNAV systems, procedure NA below -16°C (4°F) or above 54°C (130°F). Simultaneous approach authorized with Rwy 12L/R, except for arrivals at RRRPP and HRBEE. Use of FD or AP providing RNAV track guidance required during simultaneous operations. GPS required. For inop ALS, increase RNP 0.30 all Cats visibility to ¾.

**ALSF-2**  
 MISSED APPROACH: Climb to 1100 then climbing right turn to 3000 direct IMPER and hold.

D-ATIS <b>125.025</b> <b>379.925</b>	ST. LOUIS APP CON <b>132.125 360.6</b>	ST. LOUIS TOWER <b>132.475 239.275</b>	GND CON <b>121.9 348.6</b> (Inbound) <b>121.65 377.175</b> (Outbound) <b>118.925 227.125</b> (Rwy 11/29)	CLNC DEL <b>119.5 363.1</b>	CPDLC
--	---	---	---	--------------------------------	-------

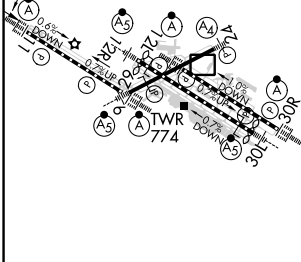


NC-3, 31 OCT 2024 to 28 NOV 2024

NC-3, 31 OCT 2024 to 28 NOV 2024

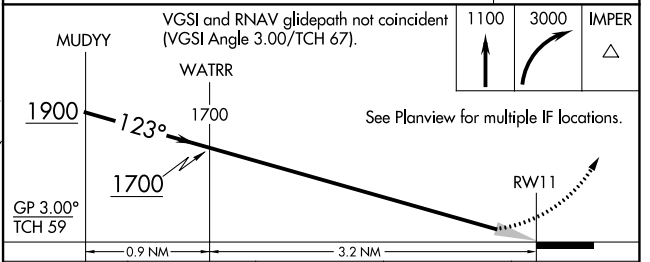
ELEV 618	<b>D</b>	TDZE 618
----------	----------	----------

Rwy 6-24 7603 X 150  
 Rwy 11-29 9000 X 150  
 Rwy 12L-30R 9013 X 150  
 Rwy 12R-30L 11020 X 150



HIRL all Rwys  
 TDZ/CL Rwys 11, 12L, 12R, 29, and 30R

MISSED APCH FIX IMPER



CATEGORY	A	B	C	D
RNP 0.30 DA		875-½	257 (300-½)	

## AUTHORIZATION REQUIRED