

WAAS CH 69499 W12A	APP CRS 123°	Rwy ldg 8956 TDZE 541 Apt Elev 618
--	------------------------	---

RNAV (GPS) Y RWY 12L

ST LOUIS LAMBERT INTL (STL)

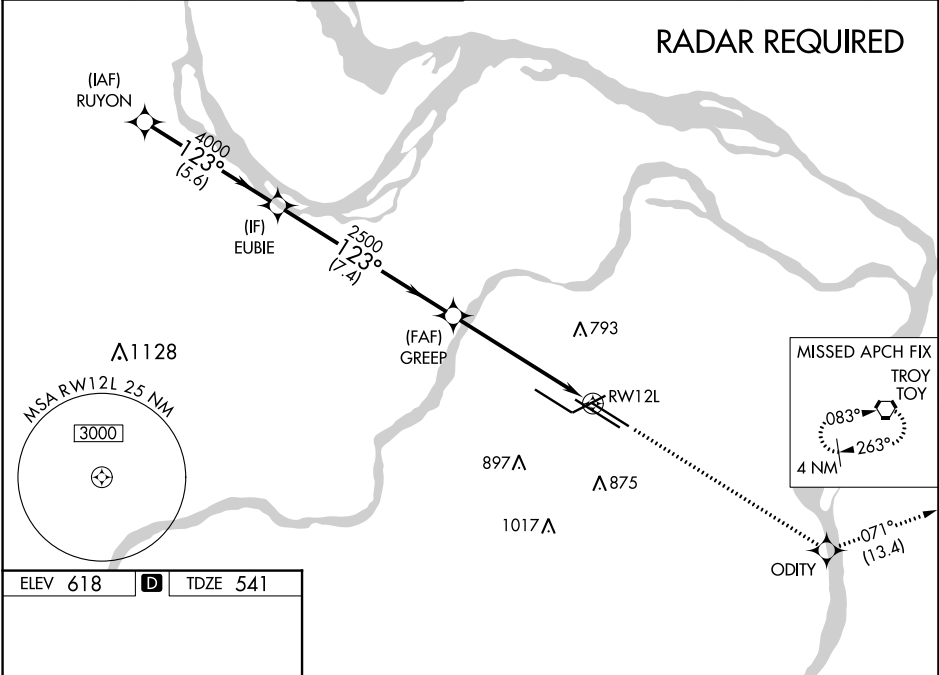
▼ For uncompensated Baro-VNAV systems, LNAV/VNAV NA below -16°C (4°F) or above 54°C (130°F). DME/DME RNP-0.3 NA. For inop ALS, increase LPV all Cats visibility to 1½ SM, LNAV/VNAV Cat E visibility to 1¾ SM, and LNAV Cat E visibility to 1¾ SM. Simultaneous approach authorized with Rwy 11. LNAV procedure NA during simultaneous operations. Use of FD or AP required during simultaneous operations.

ALSF-2



MISSED APPROACH: Climb to 3000 direct ODITY and on track 071° to TOY VORTAC and hold.

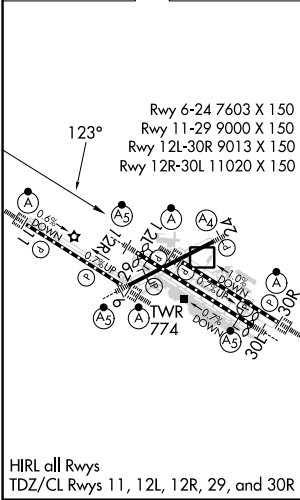
D-ATIS 125.025 379.925	ST. LOUIS APP CON 132.125 360.6	ST. LOUIS TOWER 120.05 284.6	GND CON 121.9 348.6 (Inbound) 121.65 377.175 (Outbound) 118.925 227.125 (Rwy 11/29)	CLNC DEL 119.5 363.1	CPDLC
--	---	--	---	--------------------------------	-------



NC-3, 31 OCT 2024 to 28 NOV 2024

NC-3, 31 OCT 2024 to 28 NOV 2024

ELEV 618	D	TDZE 541
----------	----------	----------



	RUYON	EUBIE	GREEP	ODITY	TOY
	5000	4000	2500	3000	tr 071°
	*1.4 NM to RWY 12L				
	5.6 NM	7.4 NM	4.5 NM	1.4 NM	
CATEGORY	A	B	C	D	E
LPV DA	951/50 410 (400-1)				
LNAV/VNAV DA	1040/60 499 (500-1½)				
LNAV MDA	1040/24 499 (500-½)	1040/40 499 (500-¾)	1040/50 499 (500-1)	1040/60 499 (500-1¼)	