

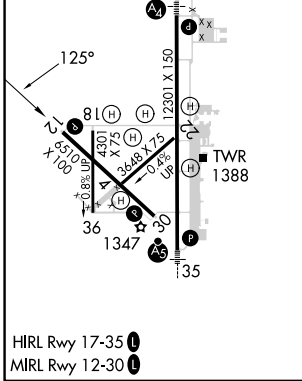
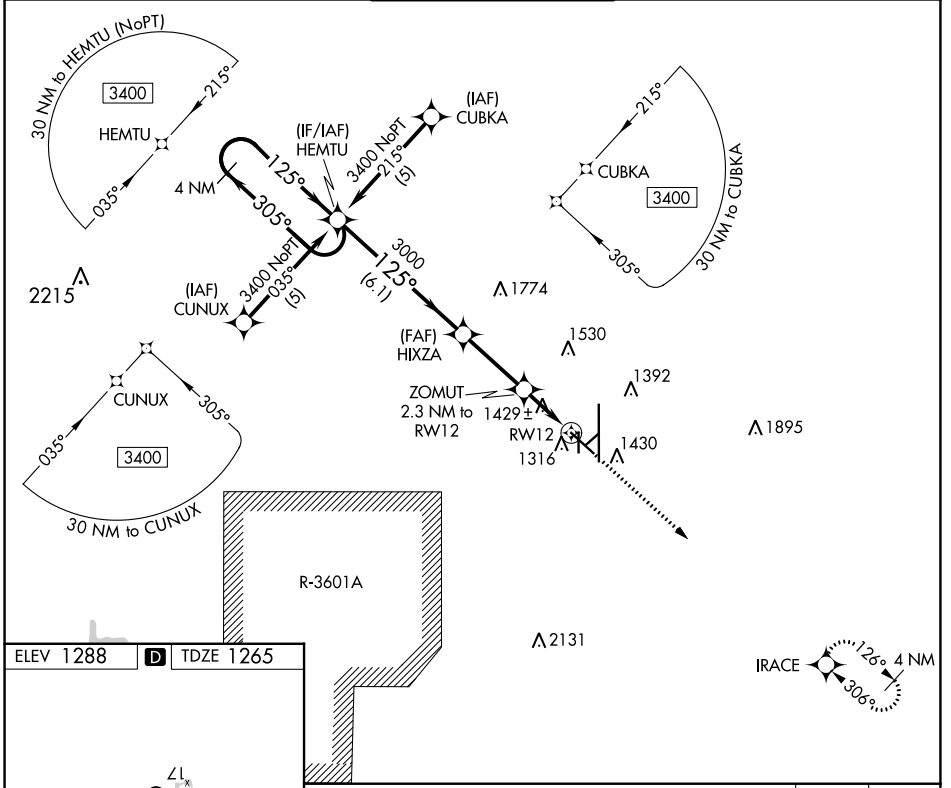
APP CRS <b>125°</b>	Rwy Idg TDZE Apt Elev	<b>6510</b> <b>1265</b> <b>1288</b>
------------------------	-----------------------------	---

# RNAV (GPS) RWY 12

SALINA RGNL (SLN)

<b>⚠</b> Circling NA for Cat D southwest of runway 12-30. DME/DME RNP-0.3 NA.	MISSED APPROACH: Climb to 3400 direct IRACE and hold.
--	---

ATIS <b>120.15</b>	KANSAS CITY CENTER <b>134.9 363.2</b>	SALINA TOWER ★ <b>119.3 (CTAF) 0 257.7</b>	GND CON <b>121.9 360.8</b>	UNICOM <b>122.95</b>
-----------------------	--	---	-------------------------------	-------------------------



	HEMTU	HIXZA	ZOMUT	IRACE
4 NM Holding Pattern			2.3 NM to RW12	
3400 ← 305°	125° →	125°	3.04° TCH 45	
	3000		1.3 NM to RW12	
		2040		
	6.1 NM	3 NM	1 NM	1.3 NM
CATEGORY	A	B	C	D
LNAV MDA	1700-1	435 (500-1)	1700-1¼ 435 (500-1½)	1700-1½ 435 (500-1½)
CIRCLING	1820-1 532 (600-1)	1840-1 552 (600-1)	1860-1½ 572 (600-1½)	1860-2 572 (600-2)

NC-2, 31 OCT 2024 to 28 NOV 2024

NC-2, 31 OCT 2024 to 28 NOV 2024