

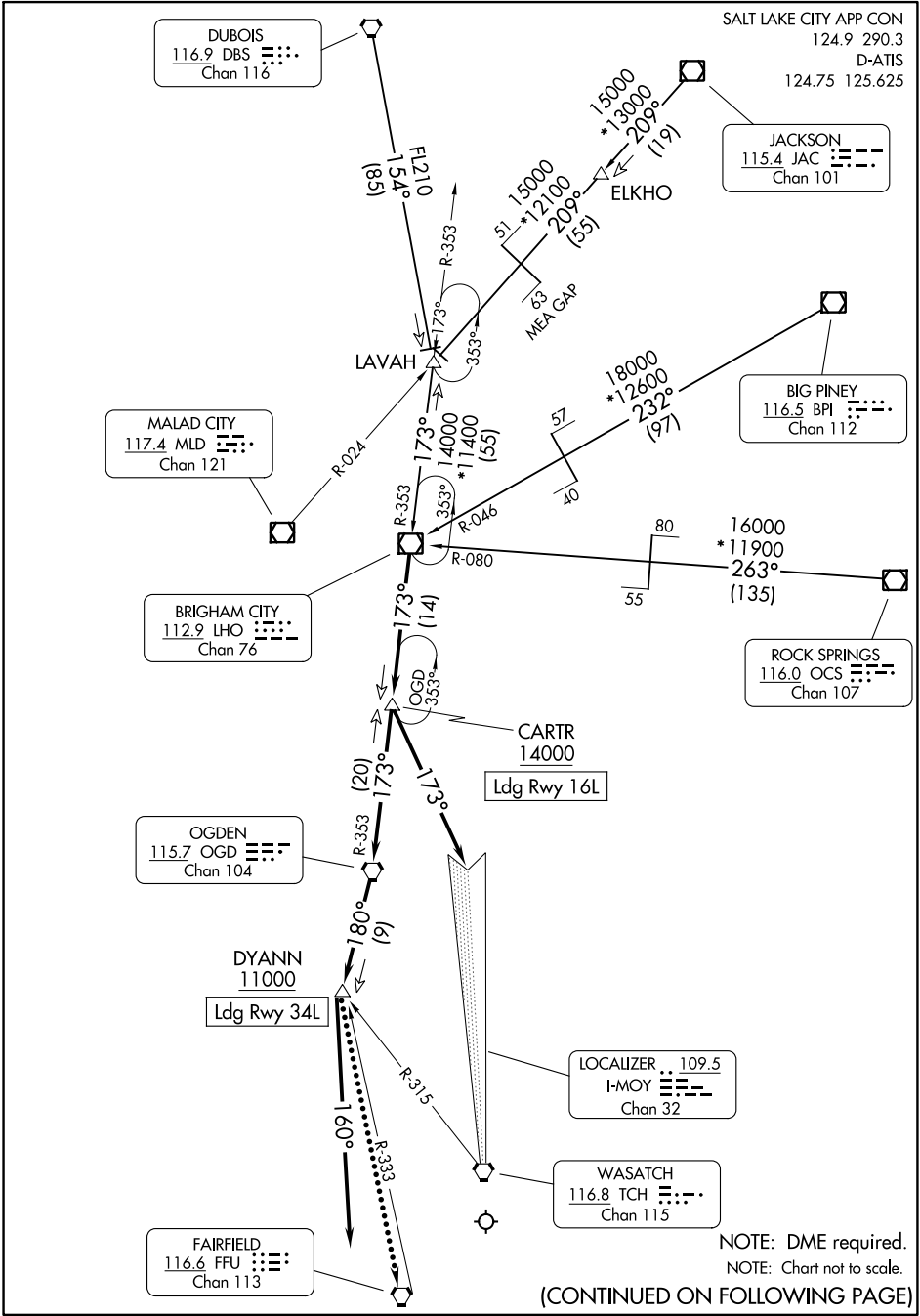
BRIGHAM CITY FIVE ARRIVAL

AL-365 (FAA)

SALT LAKE CITY INTL (SLC)
SALT LAKE CITY, UTAH

SW-4, 31 OCT 2024 to 28 NOV 2024

SW-4, 31 OCT 2024 to 28 NOV 2024



(CONTINUED ON FOLLOWING PAGE)

BRIGHAM CITY FIVE ARRIVAL

SALT LAKE CITY, UTAH
SALT LAKE CITY INTL (SLC)

ARRIVAL ROUTE DESCRIPTION

BIG PINEY TRANSITION (BPI.LHO5): From over BPI VOR/DME on BPI R-232 and LHO R-046 to LHO VOR/DME. Thence. . . .

DUBOIS TRANSITION (DBS.LHO5): From over DBS VORTAC on DBS R-154 to LAVAH, then on LHO R-353 to LHO VOR/DME. Thence. . . .

JACKSON TRANSITION (JAC.LHO5): From over JAC VOR/DME on JAC R-209 to ELKHO, then on JAC R-209 and MLD R-024 to LAVAH, then on LHO R-353 to LHO VOR/DME. Thence. . . .

ROCK SPRINGS TRANSITION (OCS.LHO5): From over OCS VOR/DME on OCS R-263 and LHO R-080 to LHO VOR/DME. Thence. . . .

LANDING NORTH:

. . . .from over LHO VOR/DME on LHO R-173 to cross CARTR at or above 14000 then on OGD R-353 to OGD VORTAC, then on OGD R-180 to cross DYANN at or above 11000. After DYANN fly heading 160° for vectors ILS or LOC RWY 34L or VISUAL RWY 34L approach.

LANDING SOUTH:

. . . .from over LHO VOR/DME on LHO R-173 to cross CARTR at or above 14000. After CARTR, fly heading 173° to intercept I-MOY localizer, proceed inbound. Expect ILS or LOC RWY 16L approach.

LOST COMMUNICATIONS

LANDING NORTH: In the event of lost communications, at DYANN proceed direct FFU VORTAC. Maintain 13000 until FFU VORTAC.

SW-4, 31 OCT 2024 to 28 NOV 2024

SW-4, 31 OCT 2024 to 28 NOV 2024