

LOC/DME I-UUH 111.9 Chan 56	APP CRS 344°	Rwy Idg TDZE 12000 4229 Apt Elev 4231
--	------------------------	--

ILS or LOC RWY 34L

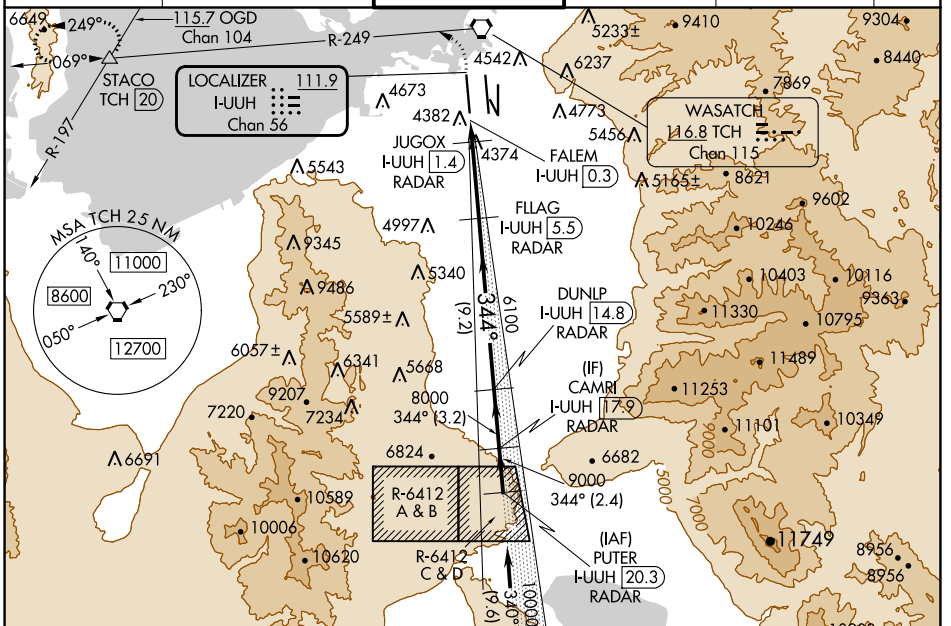
SALT LAKE CITY INTL (SLC)

RADAR required for arrivals at PUTER. DME or RADAR required.

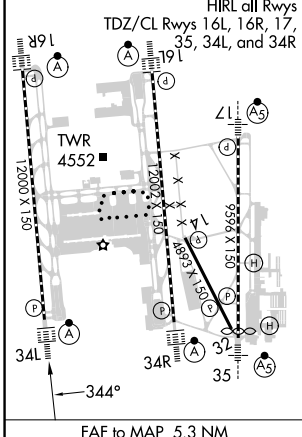
ALSIF-2

MISSED APPROACH: Climb to 8000 then climbing left turn to 8100 on TCH VORTAC R-249 to STACO INT/TCH 20 DME and hold.

D-ATIS 124.75 125.625	SALT LAKE CITY APP CON 125.7 284.6	SALT LAKE CITY TOWER 132.65 336.4	GND CON 123.775 348.6	CLNC DEL 127.3 379.975	CPDLC
---------------------------------	--	---	---------------------------------	----------------------------------	-------



ELEV 4231	TDZE 4229
-----------	-----------



IAF FAIRFIELD 116.6 FFU Chan 113

4800 8100 STACO VGS1 and ILS glidepath not coincident (VGS1 Angle 3.00/TCH 73).

PUTER I-UUH 20.3 RADAR

CAMRI I-UUH 17.9 RADAR

DUNLP I-UUH 14.8 RADAR

FLAG I-UUH 5.5 RADAR

JUGOX I-UUH 1.4 RADAR

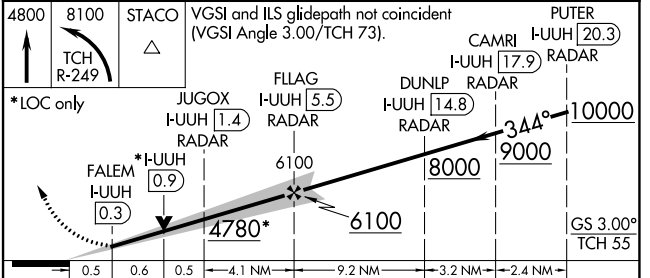
FALEM I-UUH 0.9 RADAR

*LOC only

6100 8000 9000

344°

GS 3.00° TCH 55



CATEGORY	A	B	C	D
S-ILS 34L	4429/18 200 (200-½)			
S-LOC 34L	4640/24	411 (500-½)	4640/40	411 (500-¾)

FAF to MAP 5.3 NM

Knots	60	90	120	150	180
Min:Sec	5:18	3:32	2:39	2:07	1:46

SW-4, 31 OCT 2024 to 28 NOV 2024

SW-4, 31 OCT 2024 to 28 NOV 2024