

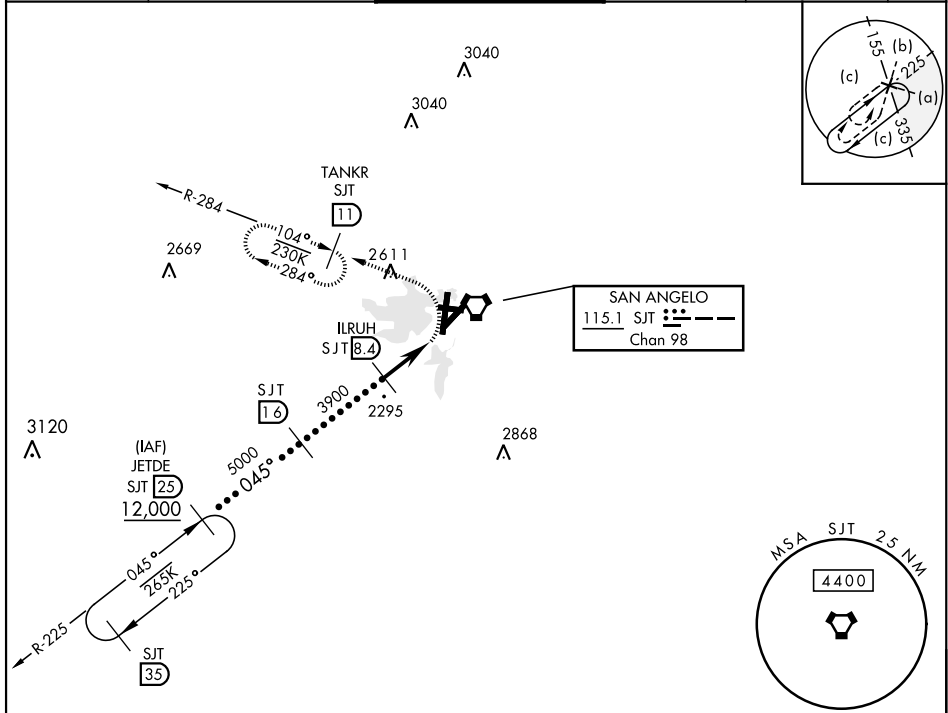
SAN ANGELO, TEXAS

22111

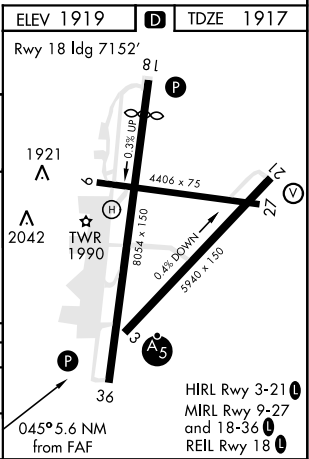
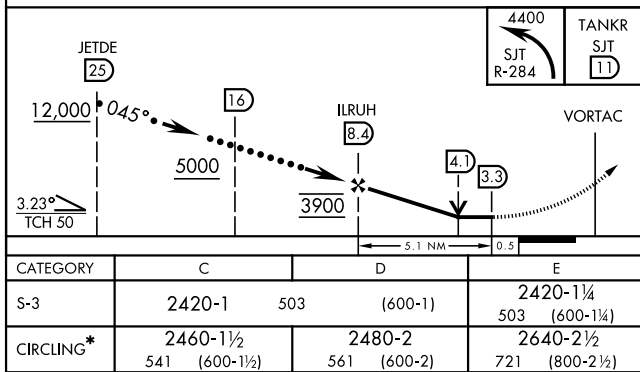
# HI-VOR/DME or TACAN RWY 3

VORTAC SJT <b>115.1</b> Chan <b>98</b>	APCH CRS <b>045°</b>	Rwy Idg <b>5940</b> TDZE <b>1917</b> Arprt Elev <b>1919</b>	AL-367 [USAF]	SAN ANGELO RGNL MATHIS FLD (KSJT)
RADAR required. * Circling NA for CAT E west of Rwy 18-36.			MALSR 	MISSED APPROACH: Climbing left turn to 4400 on SJT VORTAC R-284 to TANKR 11 DME and hold.

ATIS <b>128.45 319.0</b>	SAN ANGELO APP CON <b>125.35 354.1</b>	MATHIS TOWER ★ <b>118.3 0</b> (CTAF) <b>284.7</b>	GND CON <b>121.9 348.6</b>	UNICOM <b>122.95</b>	ASR
-----------------------------	---	--	-------------------------------	-------------------------	-----



EMERG SAFE ALT 100 NM 5100



SAN ANGELO, TEXAS  
 Amdt 5A 24MAY18

31°21'N-100°30'W

SAN ANGELO RGNL MATHIS FLD (KSJT)

# HI-VOR/DME or TACAN RWY 3

SC-3, 31 OCT 2024 to 28 NOV 2024

SC-3, 31 OCT 2024 to 28 NOV 2024