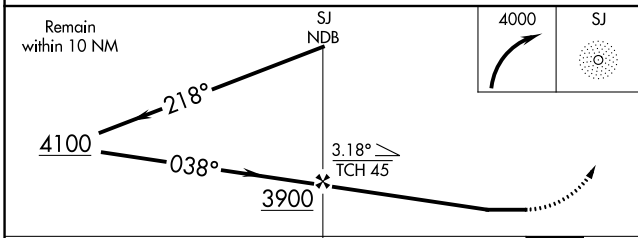
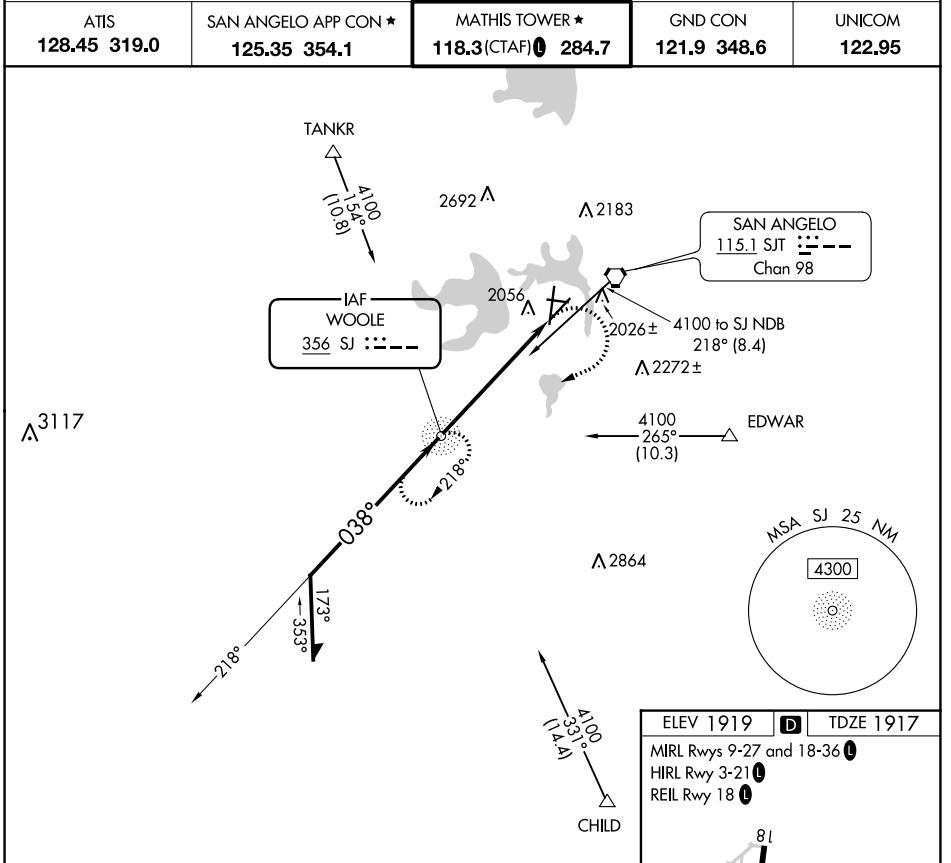


NDB SJ 356	APP CRS 038°	Rwy Idg TDZE Apt Elev	5940 1917 1919
----------------------	------------------------	-----------------------------	---

NDB RWY 3

SAN ANGELO RGNL/MATHIS FLD (SJT)

<p>For inop ALS, increase Cat A/B visibility to RVR 5500, and Cat C/D to 2 SM.</p>	<p>MALSR</p>	<p>MISSED APPROACH: Climbing right turn to 4000 direct SJ NDB and hold.</p>		
			<p>ATIS 128.45 319.0</p>	<p>SAN ANGELO APP CON ★ 125.35 354.1</p>



ELEV 1919	D	TDZE 1917
MIRL Rwy 9-27 and 18-36	L	
HIRL Rwy 3-21	L	
REIL Rwy 18	L	

Detailed approach diagram showing 81, 4406 X 75, 8054 X 150, 5940 X 150, and 36 runways with various climb and descent rates.

038° 5.7 NM from FAF	038° 5.7 NM from FAF
FAF to MAP 5.7 NM	
Knots	60 90 120 150 180
Min:Sec	5:42 3:48 2:51 2:17 1:54

CATEGORY	A	B	C	D
S-3	2640/40	723 (800-¾)	2640-1½	723 (800-1%)
C CIRCLING	2640-1	721 (800-1)	2640-2	2700-2½ 781 (800-2½)

SC-3, 31 OCT 2024 to 28 NOV 2024

SC-3, 31 OCT 2024 to 28 NOV 2024