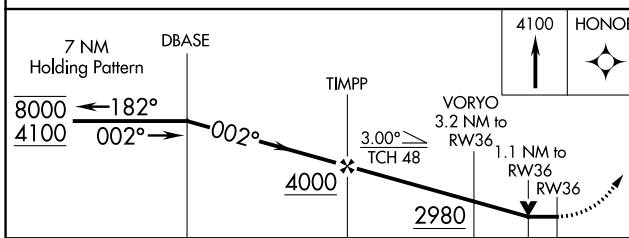
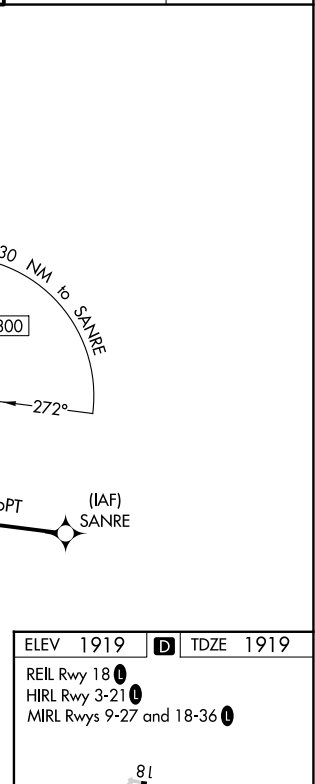
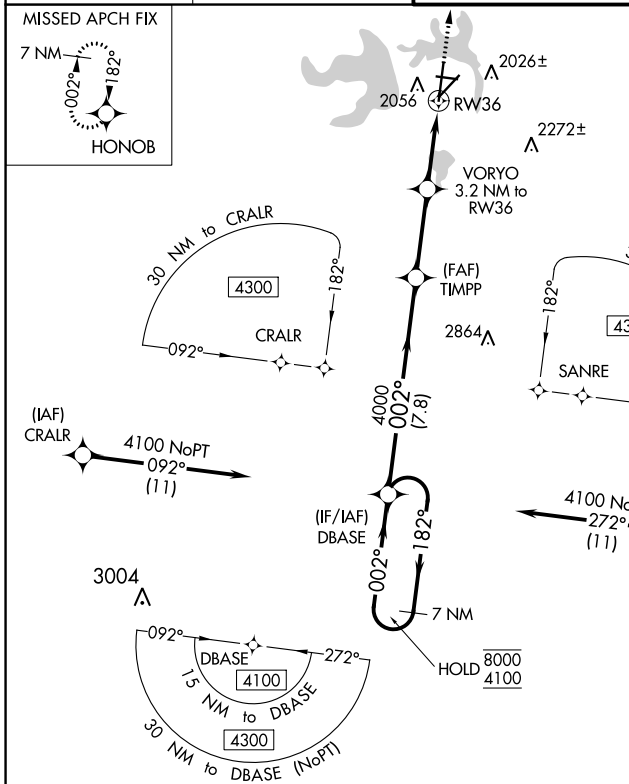


APP CRS	Rwy ldg	<b>7152</b>
<b>002°</b>	TDZE	<b>1919</b>
	Apt Elev	<b>1919</b>

# RNAV (GPS) RWY 36

SAN ANGELO RGNL/MATHIS FLD (SJT)

RNP APCH - GPS.		MISSED APPROACH: Climb to 4100 direct HONOB and hold.				
<p><b>▽</b> Circling NA for Cat E west of Rwy 18-36.  <b>▲</b> Rwy 36 helicopter visibility reduction below 3/4 SM NA.</p>		<p>ATIS <b>128.45 319.0</b></p>	<p>SAN ANGELO APP CON ★ <b>125.35 354.1</b></p>	<p>MATHIS TOWER ★ <b>118.3 (CTAF) 284.7</b></p>	<p>GND CON <b>121.9 348.6</b></p>	<p>UNICOM <b>122.95</b></p>



ELEV	1919	TDZE	1919
REIL Rwy 18	1		
HIRL Rwy 3-21	1		
MIRL Rwy 9-27 and 18-36	1		

CATEGORY	A	B	C	D	E
RNAV MDA	2320-1	401 (500-1)	2320-1 1/8	401 (500-1 1/8)	
CIRCLING	2360-1 441 (500-1)	2380-1 461 (500-1)	2500-1 1/2 581 (600-1 1/2)	2700-2 1/2 781 (800-2 1/2)	2700-2 3/4 781 (800-2 3/4)

SC-3, 31 OCT 2024 to 28 NOV 2024

SC-3, 31 OCT 2024 to 28 NOV 2024