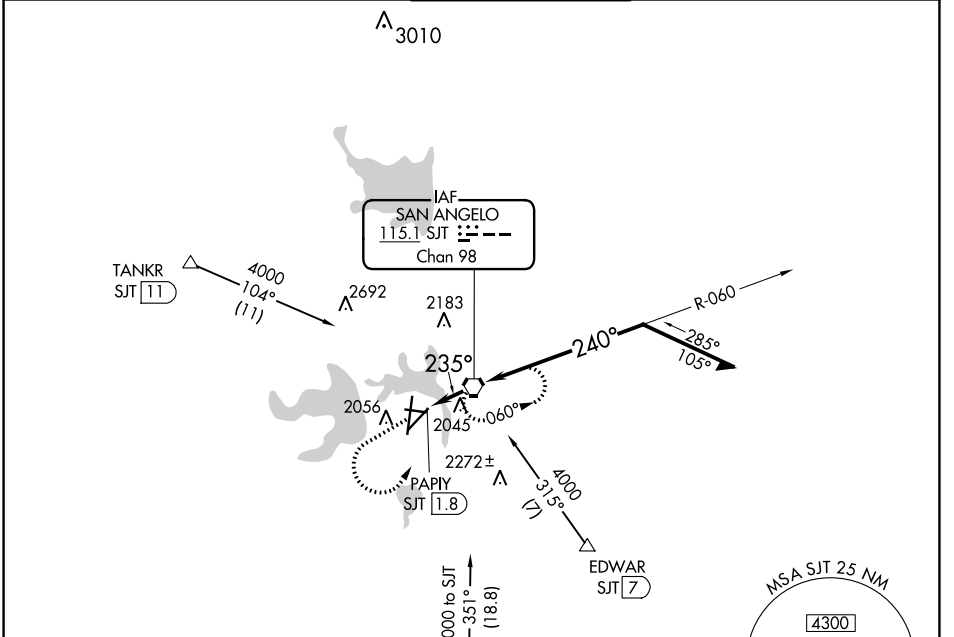


VORTAC SJT <b>115.1</b> Chan <b>98</b>	APP CRS <b>235°</b>	Rwy Idg TDZE Apt Elev	<b>5940</b> <b>1906</b> <b>1919</b>
--	------------------------	-----------------------------	---

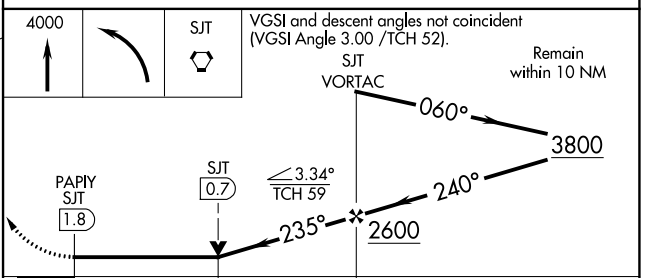
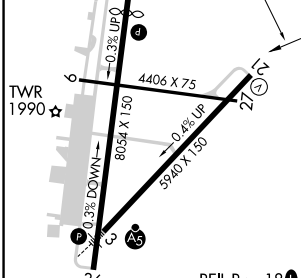
**VOR Y RWY 21**  
SAN ANGELO RGNL/MATHIS FLD (SJT)

ASR Circling NA for Cat D west of Rwy 18-36.	MISSED APPROACH: Climb to 4000, then left turn direct SJT VORTAC and hold.
---	--

ATIS <b>128.45 319.0</b>	SAN ANGELO APP CON * <b>125.35 354.1</b>	MATHIS TOWER * <b>118.3 (CTAF) 284.7</b>	GND CON <b>121.9 348.6</b>	UNICOM <b>122.95</b>
-----------------------------	---	---	-------------------------------	-------------------------



ELEV 1919	<b>D</b>	TDZE 1906
-----------	----------	-----------



REIL Rwy 18 <b>0</b>	HIRL Rwy 3-21 <b>0</b>	MIRL Rws 9-27 and 18-36 <b>0</b>	FAF to MAP 1.8 NM		
Knots	60	90	120	150	180
Min:Sec	1:48	1:12	0:54	0:43	0:36
<b>C</b> CIRCLING	2360-1 441 (500-1)	2380-1 461 (500-1)	2500-1½ 581 (600-1½)	2580-2 661 (700-2)	

SC-3, 31 OCT 2024 to 28 NOV 2024

SC-3, 31 OCT 2024 to 28 NOV 2024