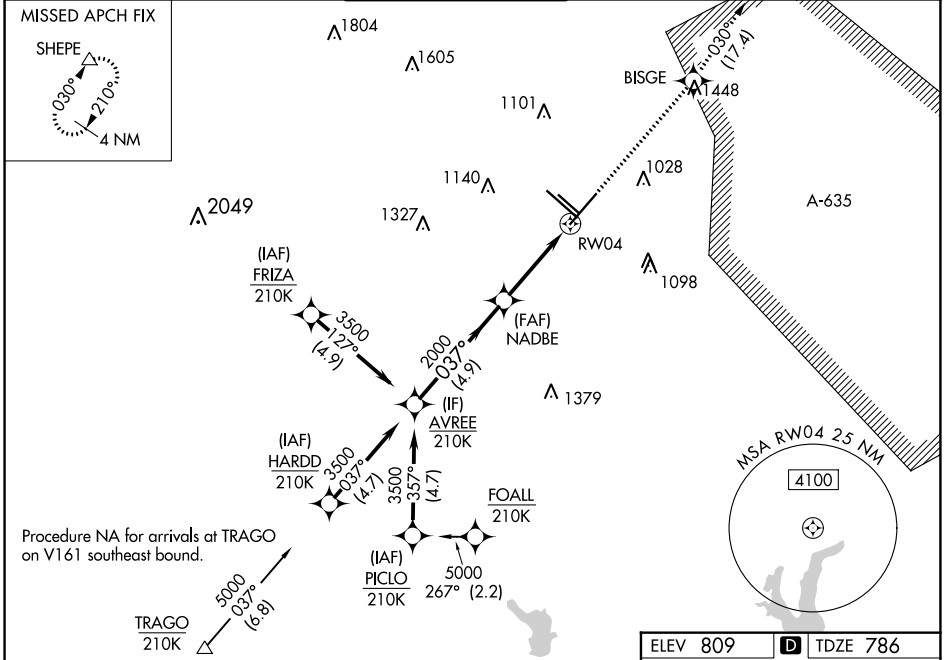


WAAS CH 77613 W04A	APP CRS 037°	Rwy Idg TDZE Apt Elev	8505 786 809
----------------------------------------	------------------------	-----------------------------	-----------------------------------------

RNAV (GPS) Y RWY 4

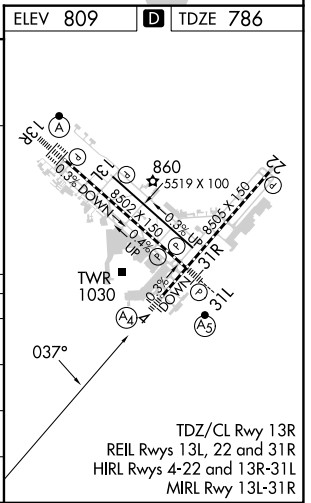
SAN ANTONIO INTL (SAT)

RNP APCH - GPS.		MALS	MISSED APPROACH: Climb to 3500 direct BISGE and track 030° to SHEPE and hold.		
<p>▼ Circling NA northwest of Rws 4 and 13R. Inop table does not apply to LPV. For uncompensated Baro-VNAV systems, procedure NA below -5°C or above 54°C.</p> <p>▲ For inop ALS, increase LNAV/VNAV all Cats visibility to RVR 6000. Increase LNAV Cats A/B visibility to RVR 5500 and LNAV Cats C/D visibility to 1/2 SM.</p>					
D-ATIS 118.9	SAN ANTONIO APP CON 125.1 307.0	SAN ANTONIO TOWER 119.8 257.8	GND CON 121.9 348.6	CLNC DEL 126.7	CPDLC



Procedure NA for arrivals at TRAGO on V161 southeast bound.

VGSi and RNAV glidepath not coincident (VGSi Angle 3.00/TCH 79).			
AVREE	NADBE	BISGE	SHEPE
3500	2000	3500	tr 030°
GP 3.00° TCH 56		1.3 NM to RWY 4	
4.9 NM		2.3 NM	
CATEGORY		D	
LPV DA	986/40	200 (200-3/4)	
LNAV/VNAV DA	1201/50	415 (400-1)	
LNAV MDA	1280/40	494 (500-3/4)	1280/60 494 (500-1 1/4)
CIRCLING	1280-1 471 (500-1)	1340-1 531 (600-1)	1420-1 3/4 611 (700-1 3/4) 1520-2 1/4 711 (800-2 1/4)



SC-3, 31 OCT 2024 to 28 NOV 2024

SC-3, 31 OCT 2024 to 28 NOV 2024