

DEPARTURE ROUTE DESCRIPTION

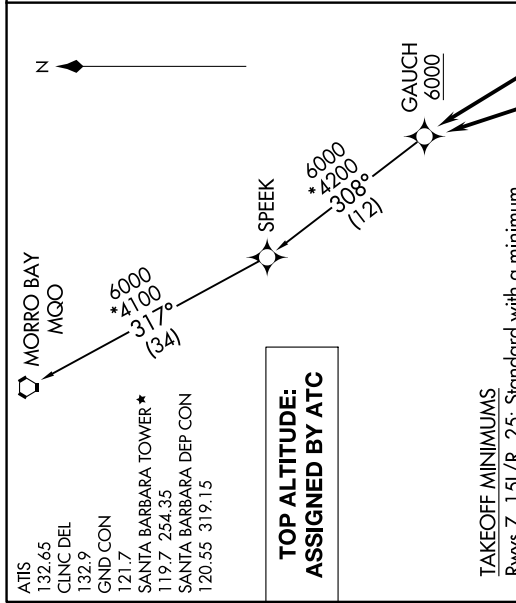
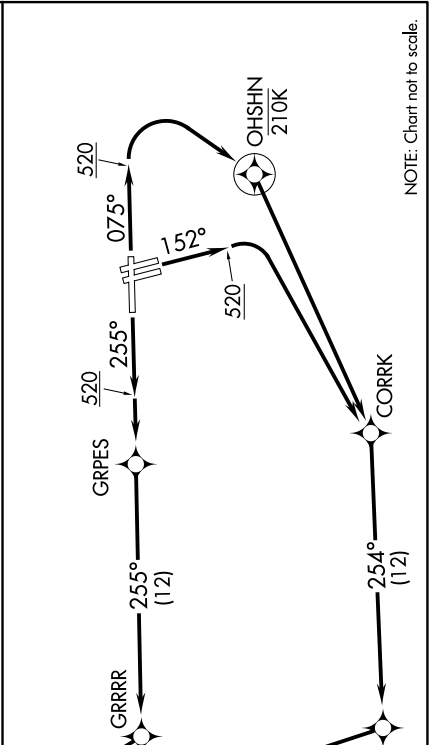
TAKEOFF RUNWAY 7: Climb on heading 075° to 520, then right turn direct OHSHN, then right turn direct CORRK, then on track 254° to KNNZI, then on track 331° to cross GAUCH at or above 6000, thence

TAKEOFF RUNWAYS 15L/R: Climb on heading 152° to 520, then right turn direct CORRK, then on track 254° to KNNZI, then on track 331° to cross GAUCH at or above 6000, thence

TAKEOFF RUNWAY 25: Climb on heading 255° to 520, then direct GRPES, then on track 255° to GRRRR, then on track 320° to cross GAUCH at or above 6000, thence

. . . .on (transition). Maintain ATC assigned altitude. Expect final altitude 10 minutes after departure.

MORRO BAY TRANSITION (GAUCH2.MQO)



NOTE: Chart not to scale.