

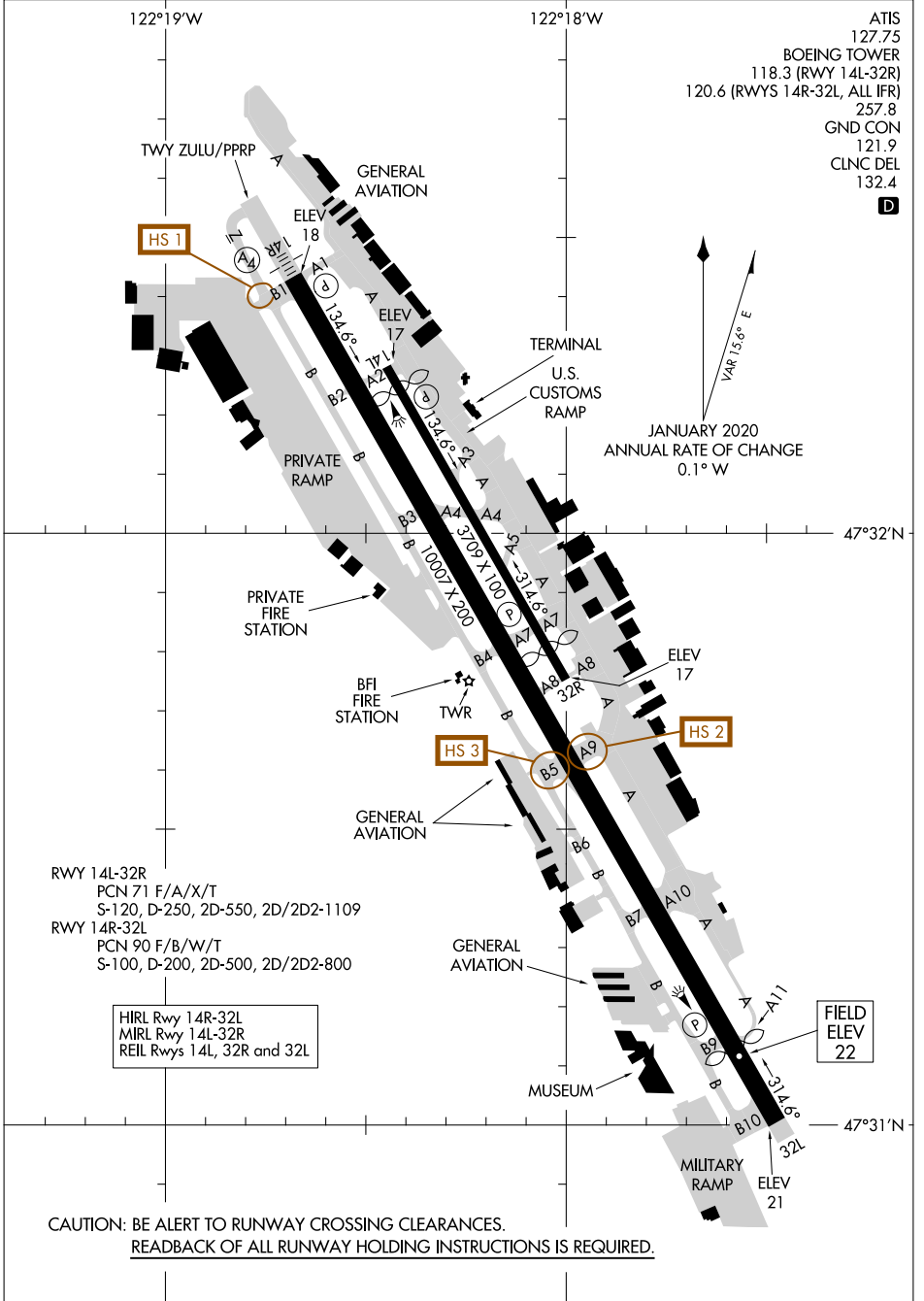
AIRPORT DIAGRAM

AL-384 (FAA)

BOEING FLD/KING COUNTY INTL (BFI)
SEATTLE, WASHINGTON

NW-1, 31 OCT 2024 to 28 NOV 2024

NW-1, 31 OCT 2024 to 28 NOV 2024



- ATIS 127.75
- BOEING TOWER 118.3 (RWY 14L-32R)
- 120.6 (RWYS 14R-32L, ALL IFR)
- 257.8
- GND CON 121.9
- CLNC DEL 132.4

D



JANUARY 2020
ANNUAL RATE OF CHANGE
0.1° W

RWY 14L-32R
PCN 71 F/A/X/T
S-120, D-250, 2D-550, 2D/2D2-1109

RWY 14R-32L
PCN 90 F/B/W/T
S-100, D-200, 2D-500, 2D/2D2-800

HIRL Rwy 14R-32L
MIRL Rwy 14L-32R
REIL Rwys 14L, 32R and 32L

FIELD
ELEV 22

CAUTION: BE ALERT TO RUNWAY CROSSING CLEARANCES.
READEBACK OF ALL RUNWAY HOLDING INSTRUCTIONS IS REQUIRED.

AIRPORT DIAGRAM

SEATTLE, WASHINGTON
BOEING FLD/KING COUNTY INTL (BFI)