

WAAS CH 92568 W14A	APP CRS 135°	Rwy Idg TDZE Apt Elev	9120 18 22
--	------------------------	-----------------------------	---------------------------------------


RNAV (GPS) Y RWY 14R

BOEING FLD/KING COUNTY INTL (BFI)

RNP APCH - GPS.

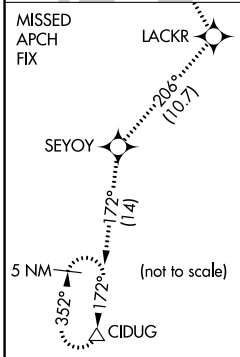
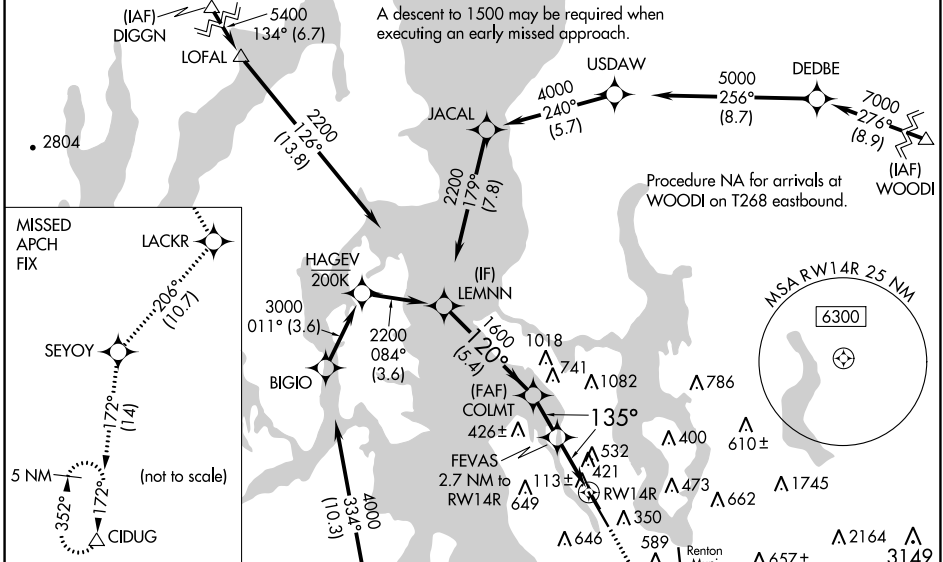
RADAR required for missed approach.

⚠ For uncompensated Baro-VNAV systems, LNAV/VNAV NA below -6°C or above 54°C. Circling NA for Cats C and D northeast of Rwy 14L-32R. Circling Rwy 32R NA at night. For inop ALS, increase LPV visibility to RVR 4500, increase LNAV Cats C and D visibility to 1 1/2 SM. Rwy 14R helicopter visibility reduction below RVR 4000 NA.

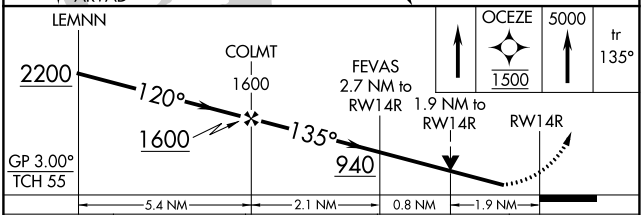
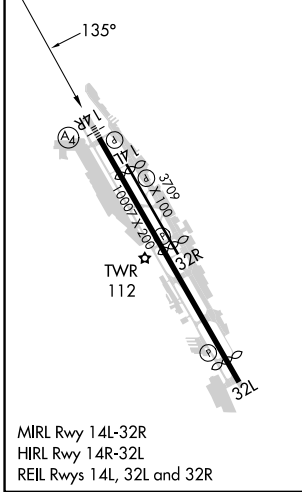
MALSIF 

MISSED APPROACH: Climb direct OCEZE, cross OCEZE at 1500, then climb to 5000 on the RNAV missed approach route to CIDUG and hold.

ATIS 127.75	SEATTLE APP CON 125.9 306.9	BOEING TOWER 120.6 257.8	GND CON 121.9	CLNC DEL 132.4
-----------------------	---------------------------------------	------------------------------------	-------------------------	--------------------------



ELEV 22	D	TDZE 18
---------	----------	---------



CATEGORY	A	B	C	D
LPV DA	301/40		283 (300-3/4)	
LNAV/VNAV DA	744-1 3/4		726 (800-1 1/4)	
LNAV MDA	680/40 662 (700-3/4)		680-1 3/4 662 (700-1 1/4)	
CIRCLING	760-1	900-1 1/4	960-2 3/4	960-3
	738 (800-1)	878 (900-1 1/4)	938 (1000-2 3/4)	938 (1000-3)

NW-1, 31 OCT 2024 to 28 NOV 2024

NW-1, 31 OCT 2024 to 28 NOV 2024