

HI-ILS or LOC Z RWY 33

LOC I-BAD 109.9	APCH CRS 329°	Rwy ldg 11,758
		THRE 161
		Arprt Elev 165

[USAF]

BARKSDALE AFB (KBAD)

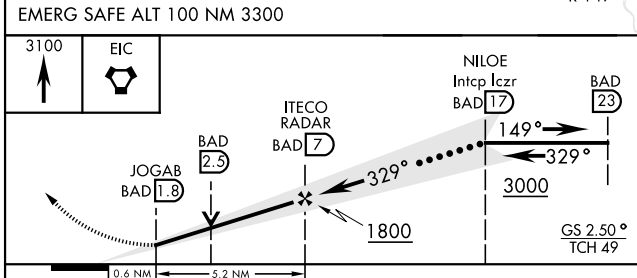
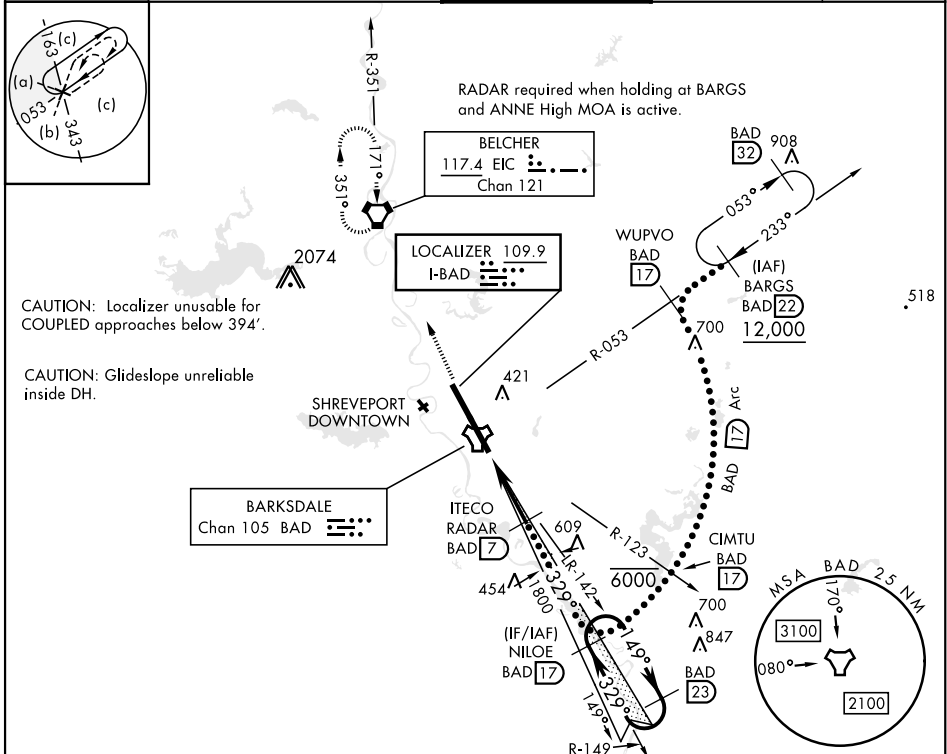
RADAR or DME required

ALSF-1

MISSED APPROACH: Climb to 3100 direct to EIC VORTAC and hold.

- *When ALS inop, increase CAT CDE RVR to 40 and vis to 3/4 mile.
- **When ALS inop, increase CAT CDE RVR to 60 and vis to 1 1/8 miles.
- *** Circling not authorized W of Rwy.

ATIS 307.025	SHREVEPORT APP CON 320°-152° 123.75 360.725 153°-319° 119.9 335.55	TOWER* 128.25 278.3	GND CON 121.8 253.5	ASR
------------------------	--	--------------------------------------	--------------------------------------	-----



ELEV	165	THRE	161
HIRL Rwy 15-33			
FAF to MAP 5.3 NM			
Knots	120	140	160
Min:Sec	2:36	2:14	1:57
	180	200	1:44
			1:34

HI-ILS or LOC Z RWY 33

SC-4, 31 OCT 2024 to 28 NOV 2024

SC-4, 31 OCT 2024 to 28 NOV 2024