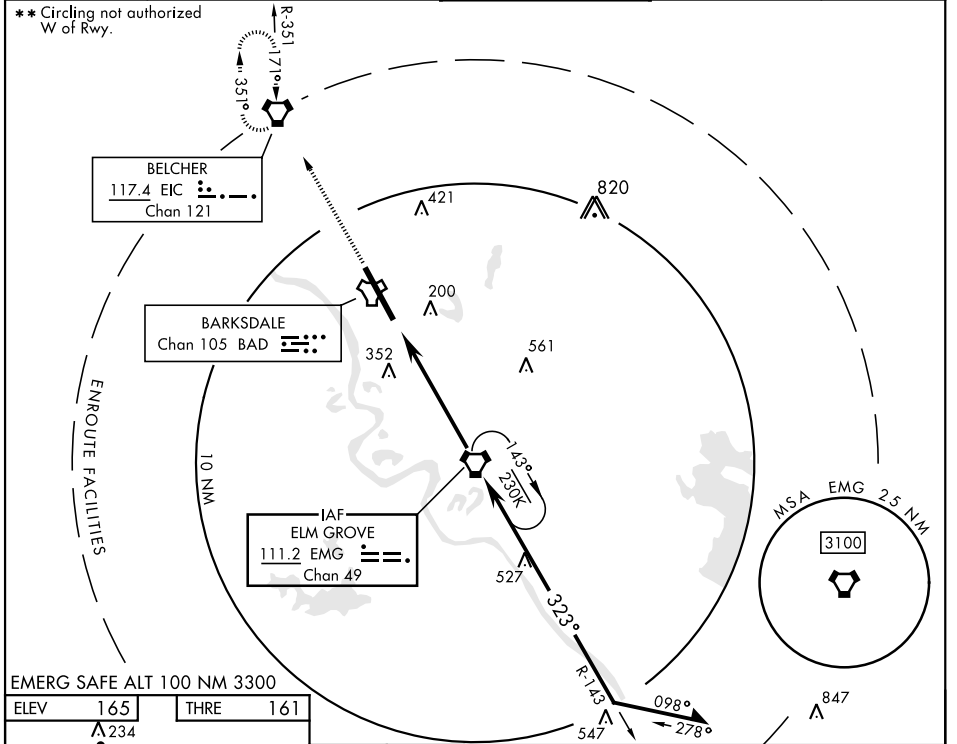


VOR/DME Y RWY 33

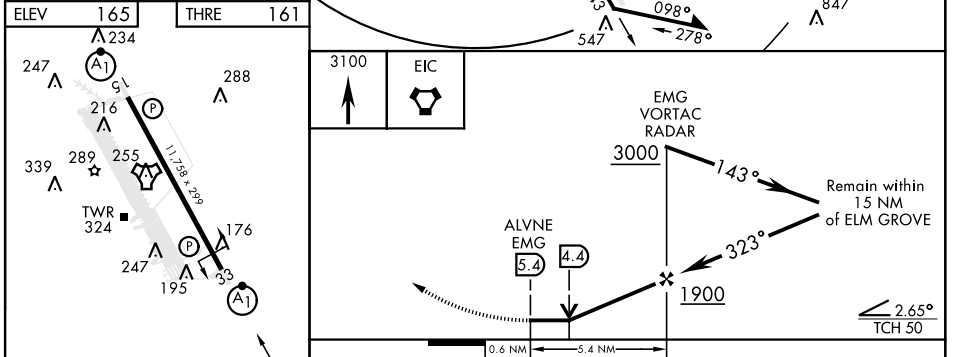
VORTAC EMG 111.2 Chan 49	APCH CRS 323°	Rwy Idg 11,758 THRE 161 Arprt Elev 165	[USAF]	BARKSDALE AFB (KBAD)
--	-------------------------	---	--------	----------------------

DME or RADAR required.	ALSF-1 	MISSED APPROACH: Climb to 3100 direct EIC VORTAC and hold.
------------------------	------------	--

ATIS 307.025	SHREVEPORT APP CON 123.75 360.725 (320°-152°) 119.9 335.55 (153°-319°)	TOWER ★ 128.25 278.3	GND CON 121.8 253.5	ASR
------------------------	--	--------------------------------	-------------------------------	-----



EMERG SAFE ALT 100 NM 3300



FAF to MAP 5.4 NM	3100	EIC	EMG VORTAC RADAR 3000	143°	323°	Remain within 15 NM of ELM GROVE	2.65° TCH 50
CATEGORY	A	B	C	D	E		
S-VOR 33 *	640/24	479 (500-½)	640/50	479 (500-1)			
Knots	60	90	120	150	180		
Min:Sec	5:24	3:36	2:42	2:10	1:48		
<input checked="" type="checkbox"/> CIRCLING **	NOT AUTHORIZED				760-2 595 (600-2)	780-2¼ 615 (700-2¼)	

VOR/DME Y RWY 33

SC-4, 31 OCT 2024 to 28 NOV 2024

SC-4, 31 OCT 2024 to 28 NOV 2024