

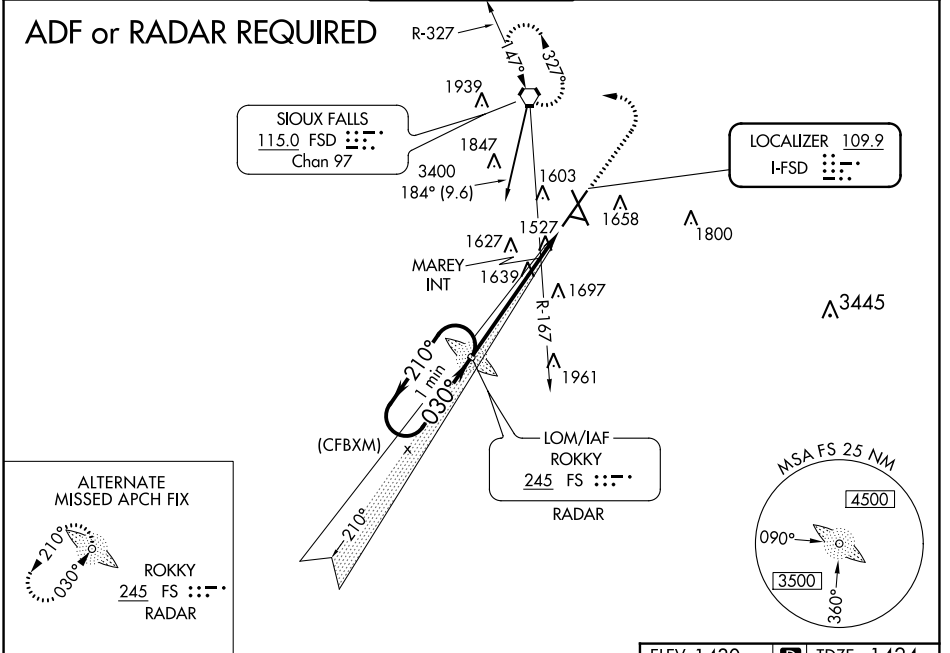
LOC I-FSD 109.9	APP CRS 030°	Rwy Idg TDZE Apt Elev	8999 1424 1430
---------------------------	------------------------	-----------------------------	---

ILS or LOC RWY 3

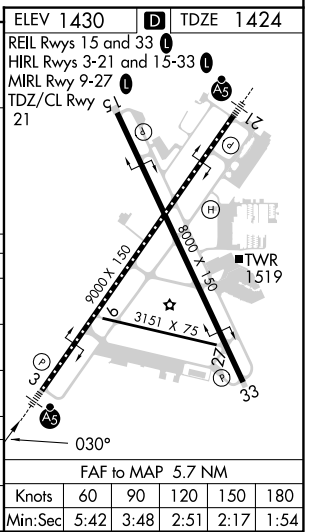
JOE FOSS FLD (FSD)

<p>ASR -31°C</p>	<p>MALSR</p>	<p>MISSED APPROACH: Climb to 3400 then left turn direct FSD VORTAC and hold.</p>
-----------------------------	--------------	--

ATIS 126.6	SIoux FALLS APP CON * 125.8 306.2	SIoux FALLS TOWER * 118.3 (CTAF) 0 257.8	GND CON 121.9 348.6	UNICOM 122.95
----------------------	---	--	-------------------------------	-------------------------



One Minute Holding Pattern	FS LOM RADAR	3400	FSD	
3400 ← 210°	3336	MAREY INT	*LOC only	
GS 3.00° TCH 54	3400	*1940		
	4.3 NM	1.4 NM		
CATEGORY	A	B	C	D
S-ILS 3		1674/24	250 (300-½)	
S-LOC 3	1940/24	516 (600-½)	1940/55	516 (600-1)
CIRCLING	1960-1 530 (600-1)	1980-1 550 (600-1)	2060-1¾ 630 (700-1¾)	2200-2½ 770 (800-2½)
MAREY FIX MINIMUMS (DUAL VOR RECEIVERS REQUIRED)				
S-LOC 3	1800/24	376 (400-½)	1800/35	376 (400-5/8)
CIRCLING	1960-1 530 (600-1)	1980-1 550 (600-1)	2060-1¾ 630 (700-1¾)	2200-2½ 770 (800-2½)



NC-1, 31 OCT 2024 to 28 NOV 2024

NC-1, 31 OCT 2024 to 28 NOV 2024