

WAAS CH <b>99323</b> <b>W21A</b>	APP CRS <b>210°</b>	Rwy Idg TDZE Apt Elev	<b>8999</b> <b>1430</b> <b>1430</b>
--	------------------------	-----------------------------	---

# RNAV (GPS) RWY 21

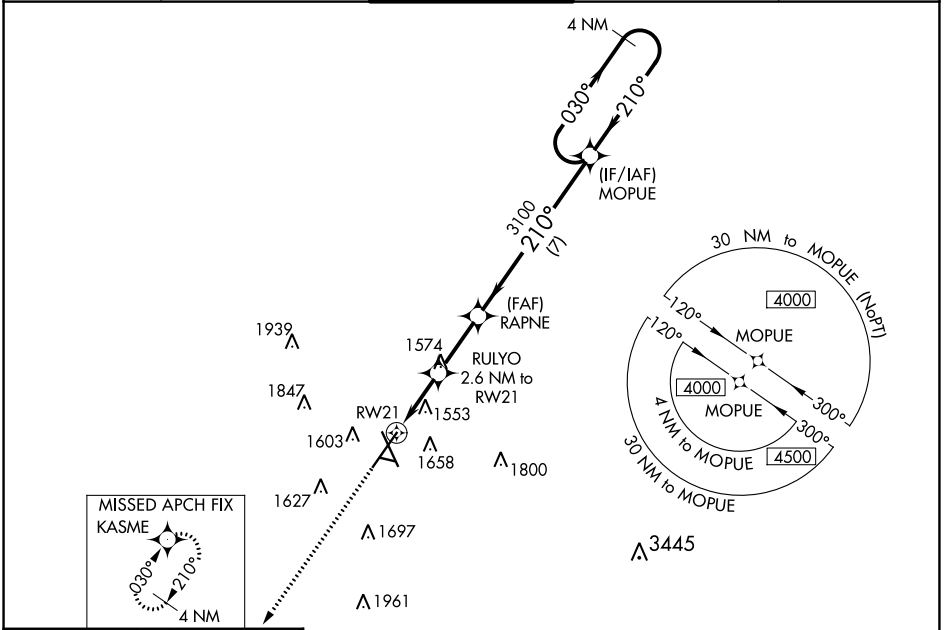
JOE FOSS FLD (FSD)

**⚠** For uncompensated Baro-VNAV systems, LNAV/VNAV NA below -22°C (-7°F) or above 54°C (130°F). DME/DME RNP-0.3 NA. For Inop ALS, increase LPV all Cats visibility to RVR 4000 and LNAV/VNAV all Cats visibility to RVR 4500.

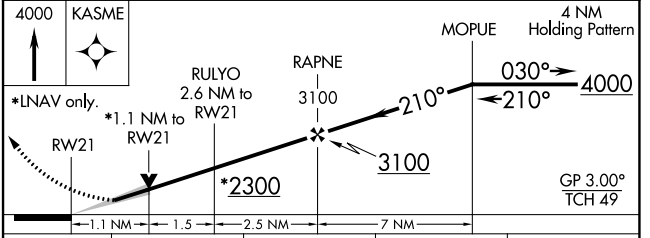
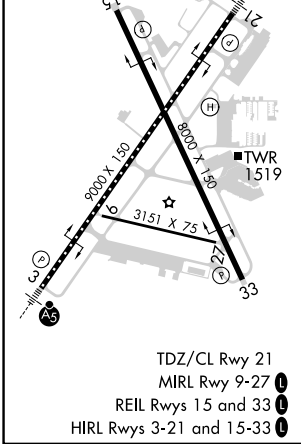
**MALSRS** MISSED APPROACH: Climb to 4000 direct KASME and hold.

**ASR** -31°C

ATIS <b>126.6</b>	SIoux FALLS APP CON* <b>125.8 306.2</b>	SIoux FALLS TOWER* <b>118.3 (CTAF) 257.8</b>	GND CON <b>121.9 348.6</b>	UNICOM <b>122.95</b>
----------------------	--	---	-------------------------------	-------------------------



ELEV 1430	<b>D</b>	TDZE 1430
-----------	----------	-----------



CATEGORY	A	B	C	D
LPV DA		1630/18	200 (300-½)	
LNAV/VNAV DA		1704/24	274 (300-½)	
LNAV MDA	1820/24	390 (400-½)	1820/35	390 (400-¾)
<b>C</b> CIRCLING	1960-1 530 (600-1)	1980-1 550 (600-1)	2060-1¾ 630 (700-1¾)	2200-2½ 770 (800-2½)

NC-1, 31 OCT 2024 to 28 NOV 2024

NC-1, 31 OCT 2024 to 28 NOV 2024