

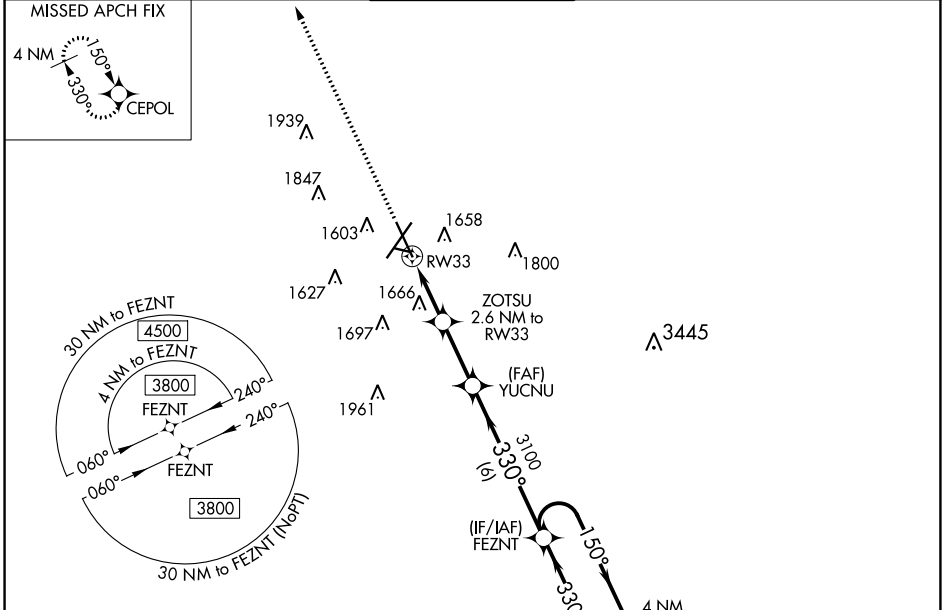
WAAS CH 40135 W33A	APP CRS 330°	Rwy Idg TDZE 1424 Apt Elev 1430	8000
--	------------------------	---	-------------

RNAV (GPS) RWY 33

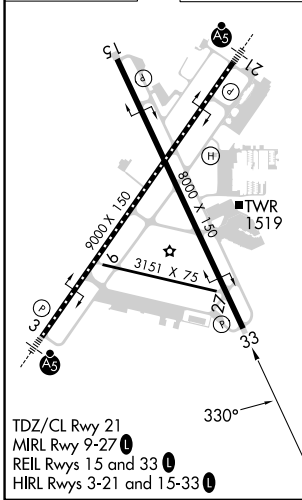
JOE FOSS FLD (F'SD)

RNP APCH-GPS.		MISSED APPROACH: Climb to 3800 direct CEPOL and hold.	
⚠ Rwy 33 helicopter visibility reduction below 3/4 SM NA. For uncompensated ASR Baro-VNAV systems, procedure NA below -22°C or above 54°C. ❄ -31°C			

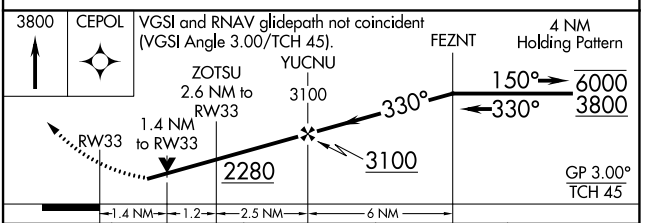
ATIS 126.6	SIoux FALLS APP CON* 125.8 306.2	SIoux FALLS TOWER* 118.3(CTAF) 257.8	GND CON 121.9 348.6	UNICOM 122.95
----------------------	--	--	-------------------------------	-------------------------



ELEV 1430	D	TDZE 1424
-----------	----------	-----------



SIoux FALLS, SOUTH DAKOTA
Amdt 2A 02DEC21



CATEGORY	A	B	C	D
LPV DA		1729-7/8	305 (300-7/8)	
LNAV/VNAV DA		1974-1 1/8	550 (600-1 1/8)	
LNAV MDA	1920-1	496 (500-1)	1920-1 3/8	496 (500-1 3/8)
C CIRCLING	1960-1 530 (600-1)	1980-1 550 (600-1)	2060-1 3/4 630 (700-1 3/4)	2200-2 1/2 770 (800-2 1/2)

RNAV (GPS) RWY 33

NC-1, 31 OCT 2024 to 28 NOV 2024

NC-1, 31 OCT 2024 to 28 NOV 2024