

# RNAV (GPS) RWY 9

JOE FOSS FLD (FSD)

APP CRS <b>098°</b>	Rwy Idg TDZE <b>1424</b> Apt Elev <b>1430</b>
------------------------	---

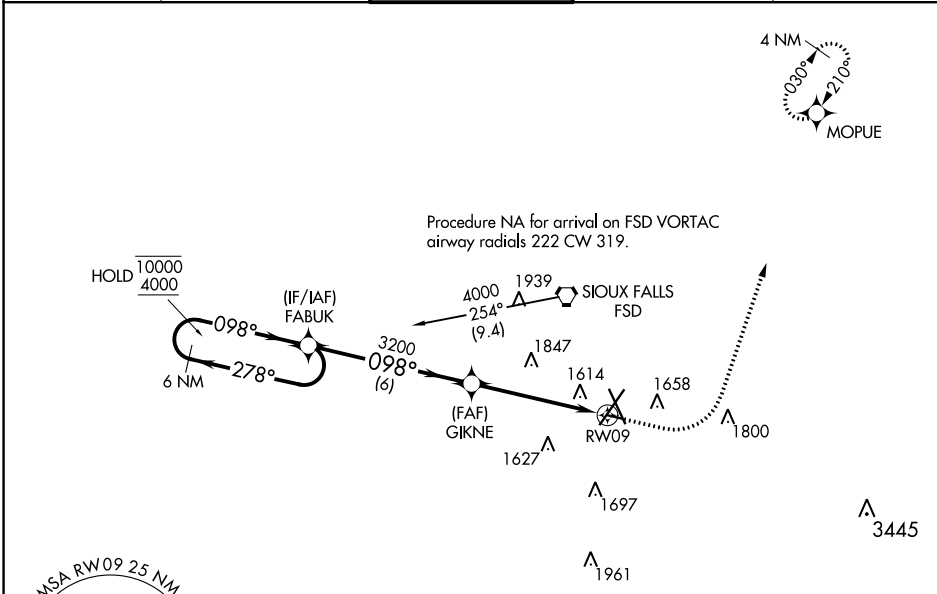
RNP APCH - GPS.

**ASR** Rwy 9 helicopter visibility reduction below 3/4 SM NA.

**ASR** -31°C

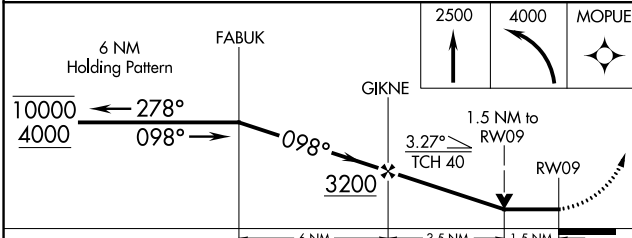
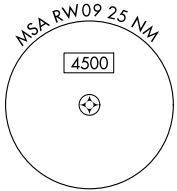
MISSED APPROACH: Climb to 2500 then climbing left turn to 4000 direct MOPUE and hold.

ATIS <b>126.6</b>	SIoux FALLS APP CON* <b>125.8 306.2</b>	SIoux FALLS TOWER* <b>118.3 (CTAF) 257.8</b>	GND CON <b>121.9 348.6</b>	UNICOM <b>122.95</b>
----------------------	--	---	-------------------------------	-------------------------

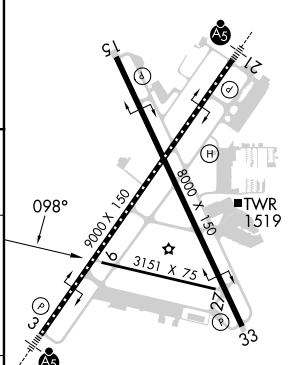


NC-1, 31 OCT 2024 to 28 NOV 2024

NC-1, 31 OCT 2024 to 28 NOV 2024



ELEV 1430	D	TDZE 1424
-----------	---	-----------



CATEGORY	A	B	C	D
LNAV MDA	2000-1	576 (600-1)		NA
CIRCLING	2000-1	570 (600-1)		NA

TDZ/CL Rwy 21  
MRL Rwy 9-27  
REIL Rws 15 and 33  
HIRL Rws 3-21 and 15-33