

LOC/DME I-SPA <b>109.1</b> Chan 28	APP CRS <b>047°</b>	Rwy Idg 5852	TDZE 802	Apt Elev 802
--	------------------------	-----------------	-------------	-----------------

# ILS or LOC RWY 5

SPARTANBURG DOWNTOWN MEML/SIMPSON FLD (SPA)

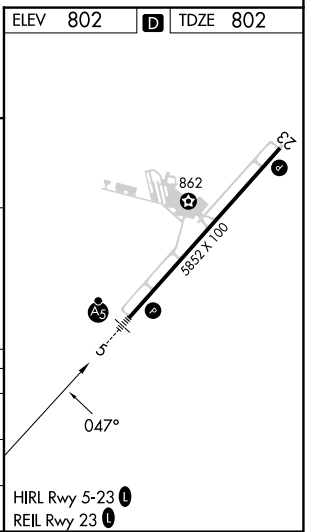
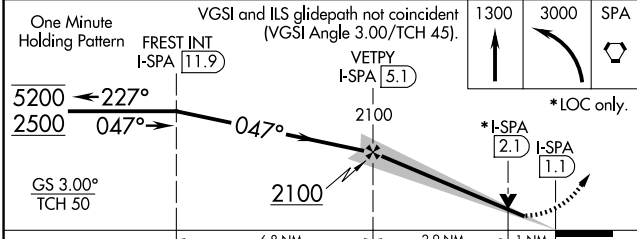
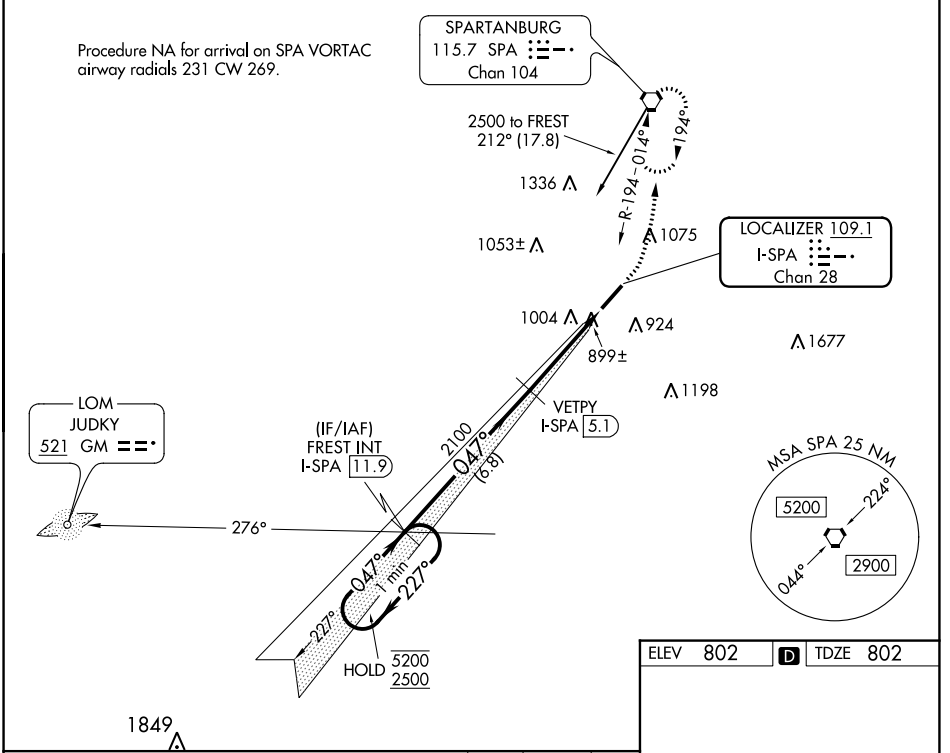
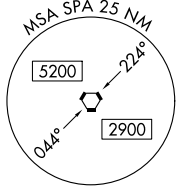
DME required.	MALS R	MISSED APPROACH: Climb to 1300 then climbing left turn to 3000 direct SPA VORTAC and hold, continue climb-in-hold to 3000.
For inop ALS, increase S-LOC 5 Cats C/D visibility to 1 SM.	AS	

AWOS-3 <b>133.925</b>	GREER APP CON * <b>119.4 350.2</b>	CLNC DEL <b>120.55</b>	UNICOM <b>123.0</b> (CTAF) <b>U</b>
--------------------------	---------------------------------------	---------------------------	--

Procedure NA for arrival on SPA VORTAC airway radials 231 CW 269.

SPARTANBURG  
115.7 SPA **U**  
Chan 104

LOCALIZER **109.1**  
I-SPA **U**  
Chan 28



CATEGORY	A	B	C	D
S-ILS 5		1002-3/4	200 (200-3/4)	
S-LOC 5		1160-3/4	358 (400-3/4)	
<b>C</b> CIRCLING	1320-1	518 (600-1)	1380-1 1/2 578 (600-1 1/2)	1420-2 618 (700-2)

# ILS or LOC RWY 5

SE-2, 31 OCT 2024 to 28 NOV 2024

SE-2, 31 OCT 2024 to 28 NOV 2024