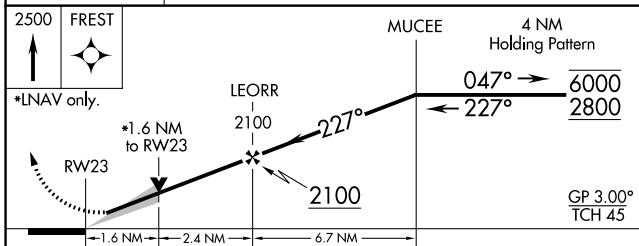
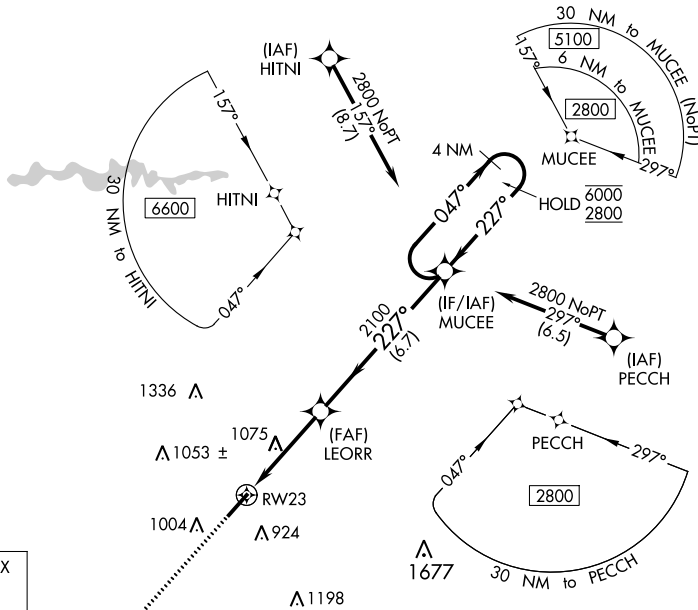


WAAS CH <b>65926</b> <b>W23A</b>	APP CRS <b>227°</b>	Rwy Idg TDZE Apt Elev	<b>5452</b> <b>801</b> <b>802</b>
--	------------------------	-----------------------------	---

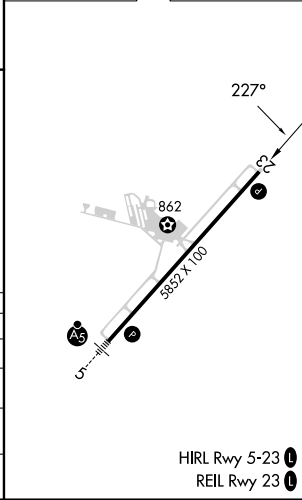
# RNAV (GPS) RWY 23

SPARTANBURG DOWNTOWN MEML/SIMPSON FLD (SPA)

RNP APCH.		MISSED APPROACH: Climb to 2500 direct FREST and hold.	
<p>▼ For uncompensated Baro-VNAV systems, LNAV/VNAV NA below -16°C or above 54°C.</p>			
AWOS-3 <b>133,925</b>	GREER APP CON * <b>119.4 350.2</b>	CLNC DEL <b>120.55</b>	UNICOM <b>123.0</b> (CTAF) <b>1</b>



ELEV 802	<b>D</b> TDZE 801
----------	-------------------



CATEGORY	A	B	C	D
LPV DA		1001- <sup>3</sup> / <sub>4</sub>	200 (200- <sup>3</sup> / <sub>4</sub> )	
LNAV/VNAV DA		1090- <sup>7</sup> / <sub>8</sub>	289 (300- <sup>7</sup> / <sub>8</sub> )	
LNAV MDA	1340-1	539 (600-1)	1340-1 <sup>1</sup> / <sub>2</sub>	539 (600-1 <sup>1</sup> / <sub>2</sub> )
<b>C</b> CIRCLING	1340-1	538 (600-1)	1380-1 <sup>1</sup> / <sub>2</sub> 578 (600-1 <sup>1</sup> / <sub>2</sub> )	1420-2 618 (700-2)

HIRL Rwy 5-23 **1**  
REIL Rwy 23 **1**

# RNAV (GPS) RWY 23

SE-2, 31 OCT 2024 to 28 NOV 2024

SE-2, 31 OCT 2024 to 28 NOV 2024