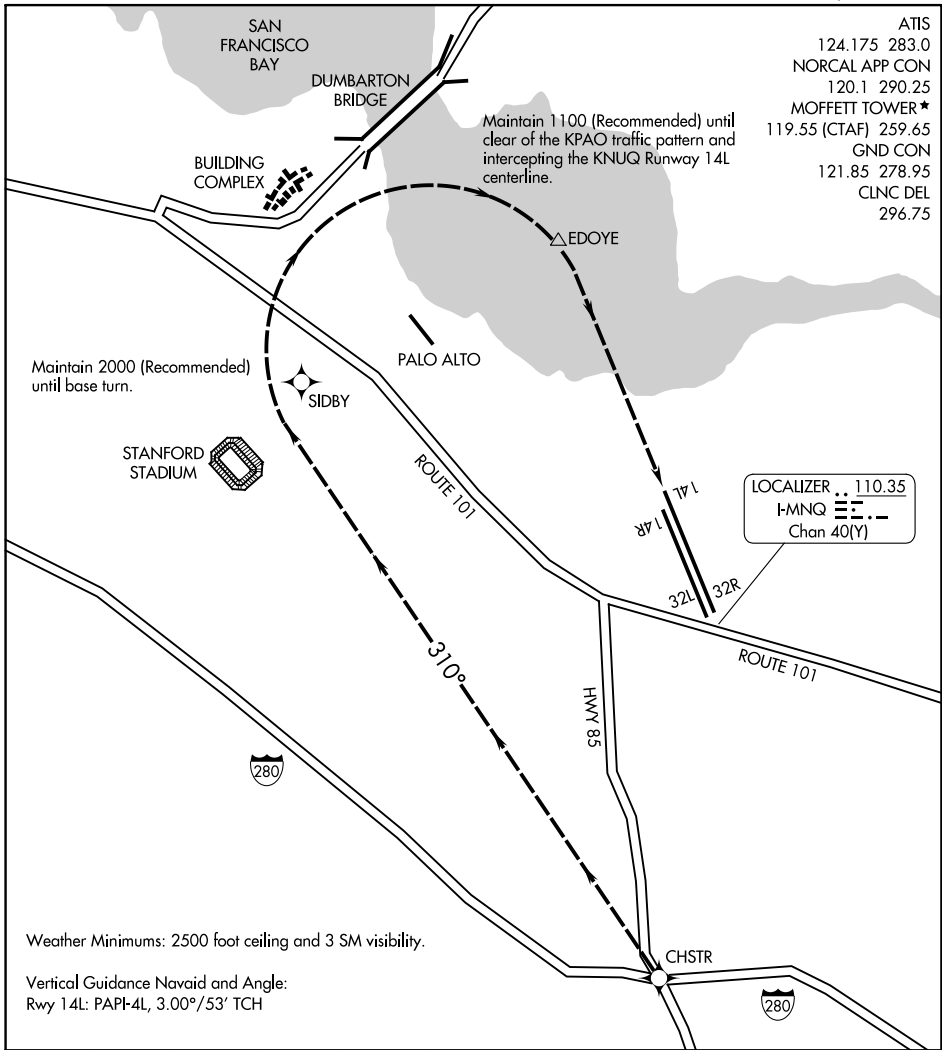


DUMBARTON VISUAL RWY 14L

MOFFETT FEDERAL AIRFIELD (NTUQ)
MOUNTAIN VIEW, CALIFORNIA



ATIS
 124.175 283.0
 NORCAL APP CON
 120.1 290.25
 MOFFETT TOWER *
 119.55 (CTAF) 259.65
 GND CON
 121.85 278.95
 CLNC DEL
 296.75

LOCALIZER .. 110.35
 I-MNQ
 Chan 40(Y)

Maintain 2000 (Recommended) until base turn.

Maintain 1100 (Recommended) until clear of the KPAO traffic pattern and intercepting the KNUQ Runway 14L centerline.

Weather Minimums: 2500 foot ceiling and 3 SM visibility.

Vertical Guidance Navaid and Angle:
 Rwy 14L: PAPI-4L, 3.00°/53' TCH

1 NM	2	3	4	5	6	7	8	9	10
------	---	---	---	---	---	---	---	---	----

DUMBARTON VISUAL RWY 14L

PROCEDURE NOT AUTHORIZED AT NIGHT

From south of KNUQ depart the highway 85/I-280 interchange heading 310°, remain 2 NM west of the KPAO runways and 1/2 NM east of Stanford Stadium. On an extended west downwind, turn base at 2000 (recommended) after passing Stanford Stadium but prior to the Dumbarton Bridge. Remain south and east of the Dumbarton Bridge, maintain 1100 (recommended) until clear of the KPAO traffic pattern and intercepting the KNUQ Runway 14L centerline.

DUMBARTON VISUAL RWY 14L

MOUNTAIN VIEW, CALIFORNIA
MOFFETT FEDERAL AIRFIELD (NTUQ)

SW-2, 31 OCT 2024 to 28 NOV 2024

SW-2, 31 OCT 2024 to 28 NOV 2024