

LOC/DME I-NUQ <b>110.35</b> Chan 40 (Y)	APP CRS <b>322°</b>	Rwy ldg <b>9006</b> TDZE <b>31</b> Apt Elev <b>37</b>
---	------------------------	---

# ILS or LOC RWY 32R

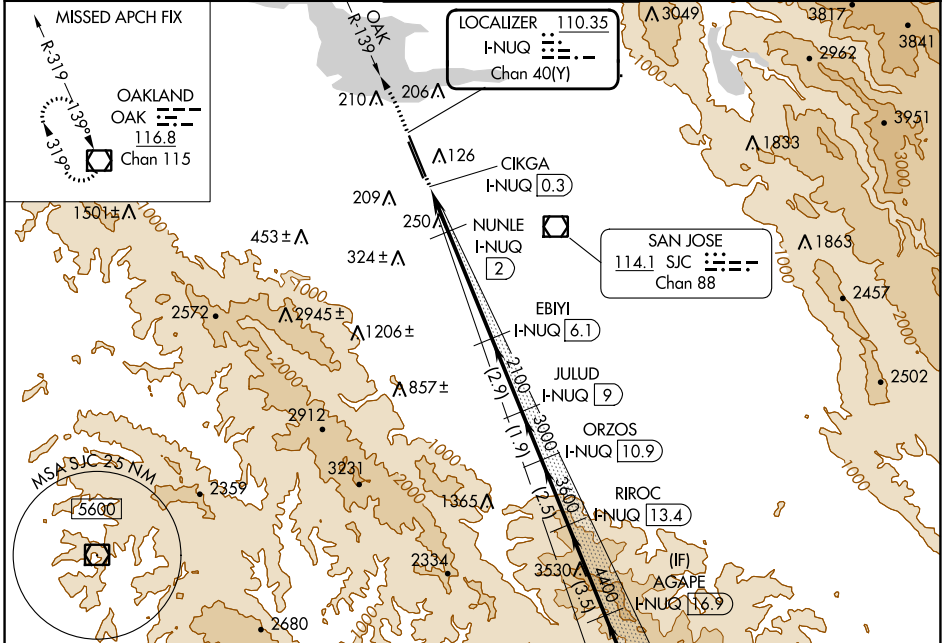
MOFFETT FEDERAL AIRFIELD (NUQ)

DME required. RADAR required for procedure entry.

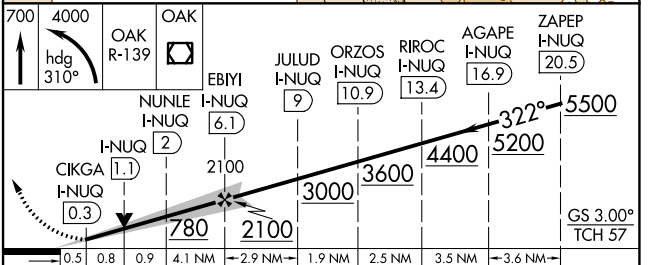
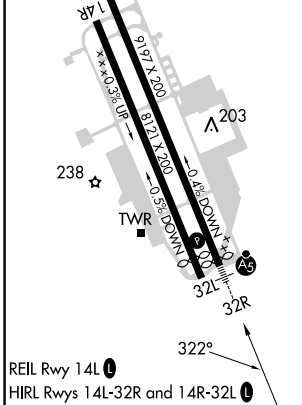
**⚠** For inop ALS, increase S-ILS 32R visibility all Cats to 1½ SM and S-LOC 32R Cat A/B to 1 SM and C/D/E to 1½ SM.

**MALS** MISSED APPROACH: Climb to 700 then climbing left turn to 4000 on heading 310° and on OAK VOR/DME R-139 to OAK VOR/DME and hold.

ATIS <b>124.175 283.0</b>	NORCAL APP CON <b>120.1 290.25</b>	MOFFETT TOWER ★ <b>119.550 (CTAF) 259.65</b>	GND CON <b>121.85 278.95</b>	CLNC DEL <b>296.75</b>
------------------------------	---------------------------------------	---	---------------------------------	---------------------------



ELEV 37	TDZE 31
---------	---------



CATEGORY	A	B	C	D	E
S-ILS 32R	483-¾		452 (500-¾)		
S-LOC 32R	500-¾ 469 (500-¾)		500-1 469 (500-1)		
<b>C</b> CIRCLING	540-1 503 (600-1)	600-1 563 (600-1)	620-1½ 583 (600-1½)	780-2½ 743 (800-2½)	940-3 903 (1000-3)

SW-2, 31 OCT 2024 to 28 NOV 2024

SW-2, 31 OCT 2024 to 28 NOV 2024