

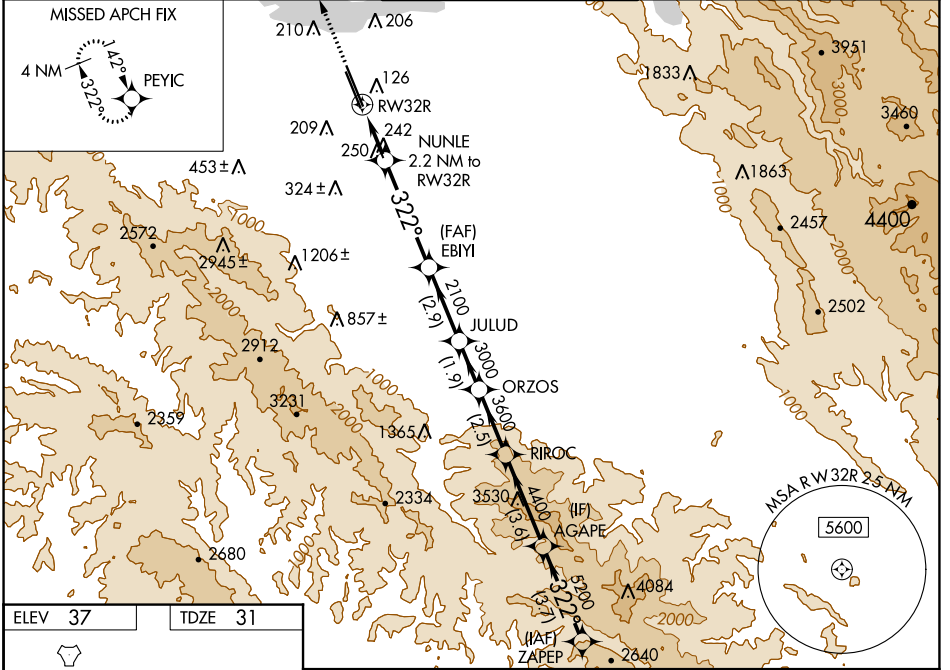
WAAS CH <b>53343</b>	APP CRS <b>322°</b>	Rwy Idg TDZE Apt Elev	<b>9006</b> <b>31</b> <b>37</b>
<b>W32B</b>			

# RNAV (GPS) RWY 32R

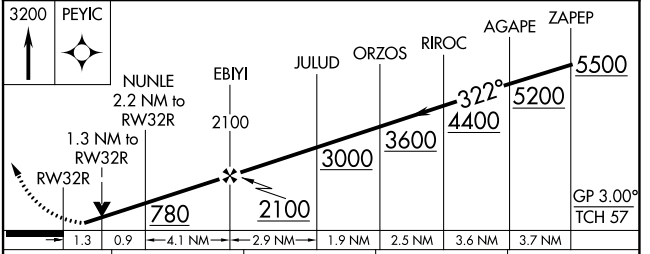
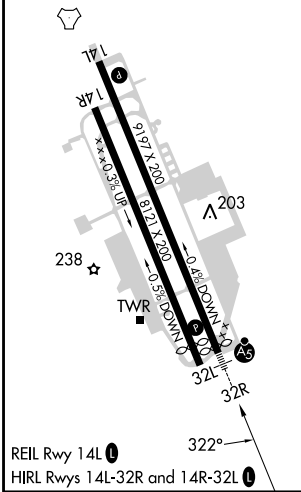
MOFFETT FEDERAL AIRFIELD (NUQ)

RNP APCH - GPS.	MALSR 	MISSED APPROACH: Climb to 3200 direct PEYIC and hold.
<p> For uncompensated Baro-VNAV systems, LNAV/VNAV NA below -15°C or above 54°C. Rwy 32R helicopter visibility reduction below 3/4 SM NA.</p> <p> For inop ALS increase LPV all Cats visibility to 1 1/4 SM, LNAV/VNAV all Cats visibility to 1 3/8 SM and LNAV Cats A/B to 1 SM and Cats C/D visibility to 1 3/8 SM.</p>		

ATIS <b>124.175 283.0</b>	NORCAL APP CON <b>120.1 290.25</b>	MOFFETT TOWER* <b>119.55</b> (CTAF) <b>259.65</b>	GND CON <b>121.85 278.95</b>	CLNC DEL <b>296.75</b>
------------------------------	---------------------------------------	--	---------------------------------	---------------------------



ELEV 37	TDZE 31
---------	---------



CATEGORY	A	B	C	D
LPV DA		452-3/4	421 (500-3/4)	
LNAV/VNAV DA		493-1	462 (500-1)	
LNAV MDA	500-3/4	469 (500-3/4)	500-1	469 (500-1)
CIRCLING	540-1 503 (600-1)	600-1 563 (600-1)	620-1 1/2 583 (600-1 1/2)	780-2 1/2 743 (800-2 1/2)

SW-2, 31 OCT 2024 to 28 NOV 2024

SW-2, 31 OCT 2024 to 28 NOV 2024