

| | | | |
|--|------------------------|-----------------------------|---|
| WAAS CH 72617 W24A | APP CRS 237° | Rwy Idg TDZE Apt Elev | 4479 374 374 |
|--|------------------------|-----------------------------|---|

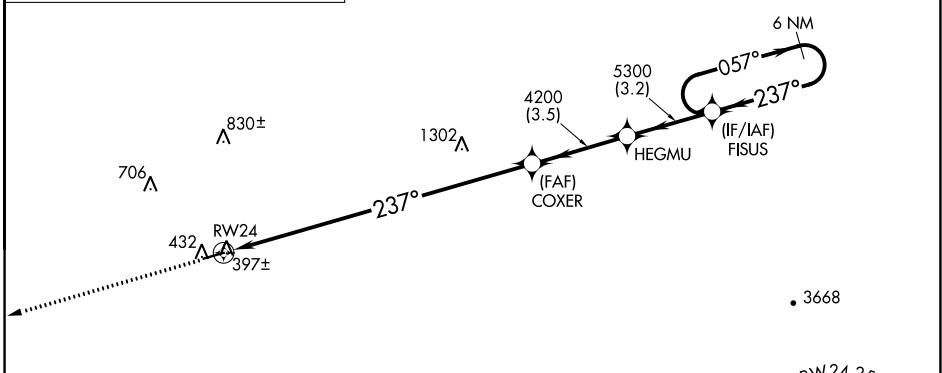
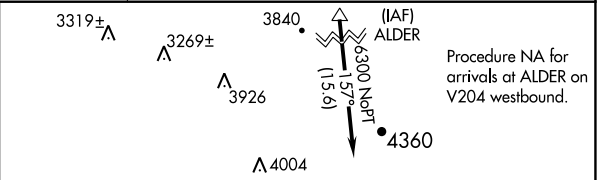
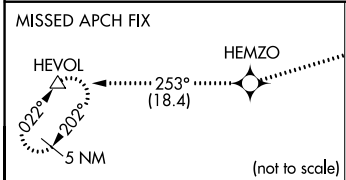
RNAV (GPS) RWY 24

ED CARLSON MEML FLD/SOUTH LEWIS COUNTY (TDO)

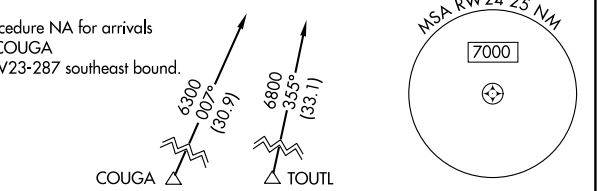
NA Baro-VNAV NA. DME/DME RNP-0.3 NA. Helicopter visibility reduction below 1 SM not authorized. Use Chehalis altimeter setting, when not received use Kelseo altimeter setting and increase all DA/MDA 40 feet and increase LPV visibility all Cats ¼ mile. Procedure NA at night.

MISSED APPROACH: Climb to 5000 direct HEMZO and on track 253° to HEVOL and hold.

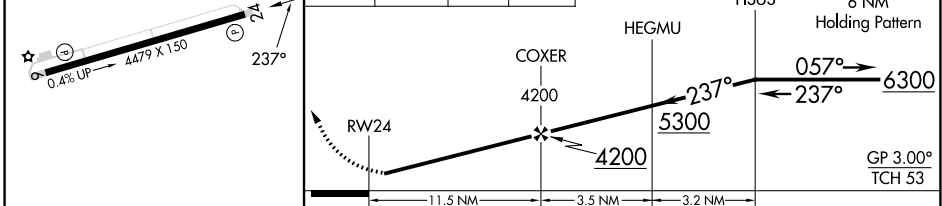
| | |
|--------------------------------------|----------------------|
| SEATTLE CENTER 124.2 317.6 | CTAF 122.9 |
|--------------------------------------|----------------------|



| | |
|----------|----------|
| ELEV 374 | TDZE 374 |
|----------|----------|



| | | | |
|------|-------|---------|--|
| 5000 | HEMZO | HEVOL | VGSI and RNAV glidepath not coincident (VGSI Angle 3.00/TCH 44). |
| ↑ | ✧ | tr 253° | |



| | | | | |
|--------------|---------------------|---|---|---|
| CATEGORY | A | B | C | D |
| LPV DA | 685-1 311 (400-1) | | | |
| LNAV/VNAV DA | 802-1½ 428 (500-1½) | | | |

NW-1, 31 OCT 2024 to 28 NOV 2024

NW-1, 31 OCT 2024 to 28 NOV 2024