

24305

[USAF]

DAVIS MONTHAN THREE DEPARTURE (DMA3.DMA)

DAVIS-MONTHAN AFB (KDMA)
TUCSON, ARIZONA

Rwy	Knots	60	120	180	240	300	360
13	Ⓞ V/V(fpm)	240	480	720	960	1200	1440
31	Ⓞ V/V(fpm)	300	600	900	1200	1500	1800

Minimum Climb Rate

Ⓞ to 3200

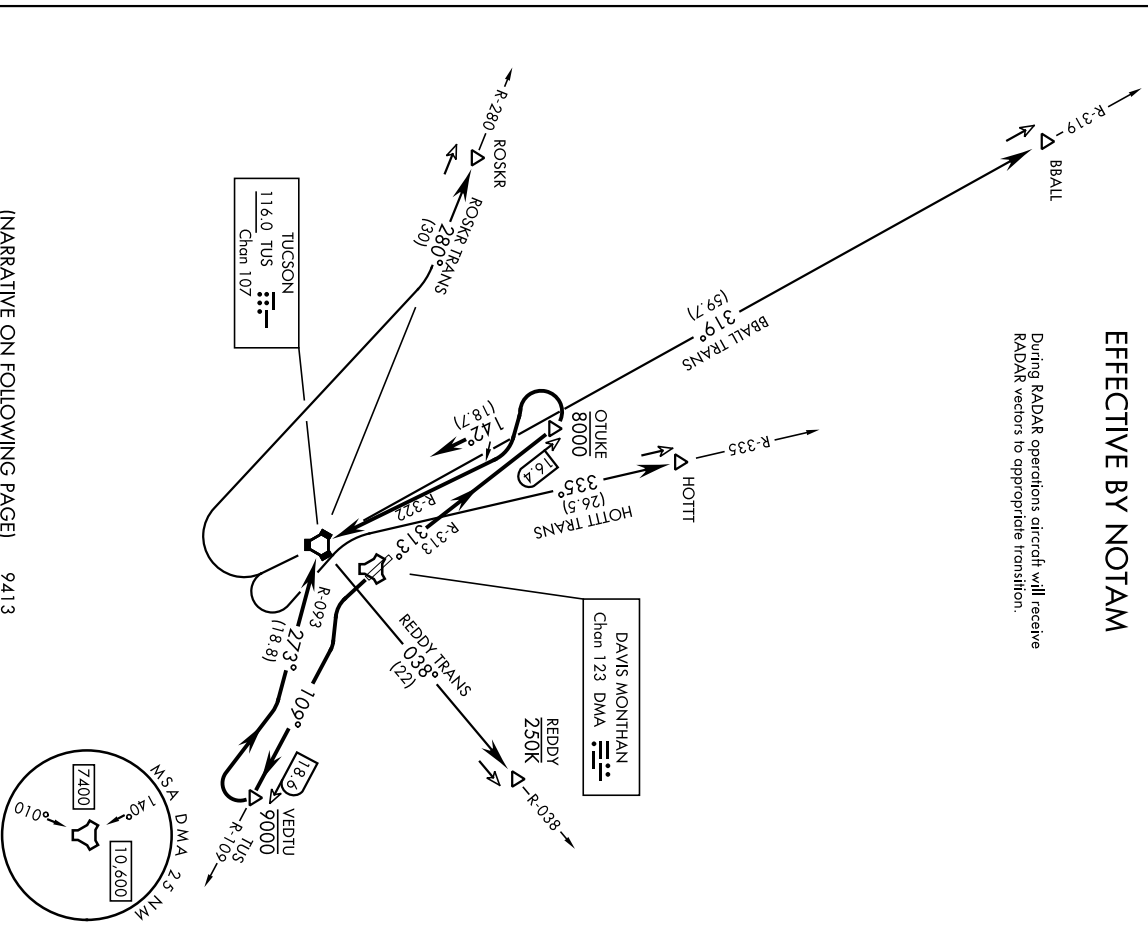
Ⓞ HOTT TRANS to 9200

ALTS * 132.3 270.1
 GINC DEL
 121.8 275.8
 GND CON
 121.8 275.8
 TOWER
 118.85 253.5
 TUCSON APP/DEP CON
 119.4 269.55

DME required

EFFECTIVE BY NOTAM

During RADAR operations aircraft will receive RADAR vectors to appropriate transition.



(NARRATIVE ON FOLLOWING PAGE) 9413

DAVIS MONTHAN THREE DEPARTURE (DMA3.DMA)

Orig 05SEP24

TUCSON, ARIZONA
DAVIS-MONTHAN AFB (KDMA)

24305

[USAF]

DAVIS-MONTHAN AFB (KDMA)

DAVIS MONTHAN THREE DEPARTURE (DMA3.DMA)

TUCSON, ARIZONA



DEPARTURE ROUTE DESCRIPTION

TAKEOFF RWY 13: Climbing left turn to intercept DMA TACAN R-109 outbound to VEDTU (DMA R-109/18.6 DME) cross VEDTU at or below 9000, turn right and continue climb on TUS VORTAC R-093 inbound crossing TUS at or above 9000, thence...

BBALL TRANSITION (DMA3.BBALL): ...from over TUS via TUS R-319 cross BBALL (TUS R-319/59.7 DME) at or above FL210.

HOTT TRANSITION (DMA3.HOTT): ...from over TUS via TUS R-335 cross HOTT (TUS R-335/26.5 DME) at or above 14,200.

ROSKR TRANSITION (DMA3.ROSKR): ...from over TUS via TUS R-280 cross ROSKR (TUS R-280/30 DME) at or above 15,300.

TAKEOFF RWY 31: Climb via DMA TACAN R-313 and cross OTUKE (DMA R-313/16.4 DME) at or below 8000, turn left and continue climb on TUS VORTAC R-322 crossing TUS at or below 10,000, thence

HOTT TRANSITION (DMA3.HOTT): ...from over TUS via TUS R-335 cross HOTT (TUS R-335/26.5 DME) at or above 11,100.

REDDY TRANSITION (DMA3.REDDY): ...from over TUS via TUS R-038 cross REDDY (TUS R-038/22 DME) at or above 12,200. Do not exceed 250 KIAS until REDDY.

ROSKR TRANSITION (DMA3.ROSKR): ...from over TUS via TUS R-280 cross ROSKR (TUS R-280/30 DME) at or above 13,600.

DAVIS MONTHAN THREE DEPARTURE (DMA3.DMA)

Orig 05SEP24

TUCSON, ARIZONA
DAVIS-MONTHAN AFB (KDMA)