

LOC/DME I-TUL 110.3 Chan 40	APP CRS 360°	Rwy Idg 10000 TDZE 650 Apt Elev 678
---	------------------------	--

ILS or LOC RWY 36R

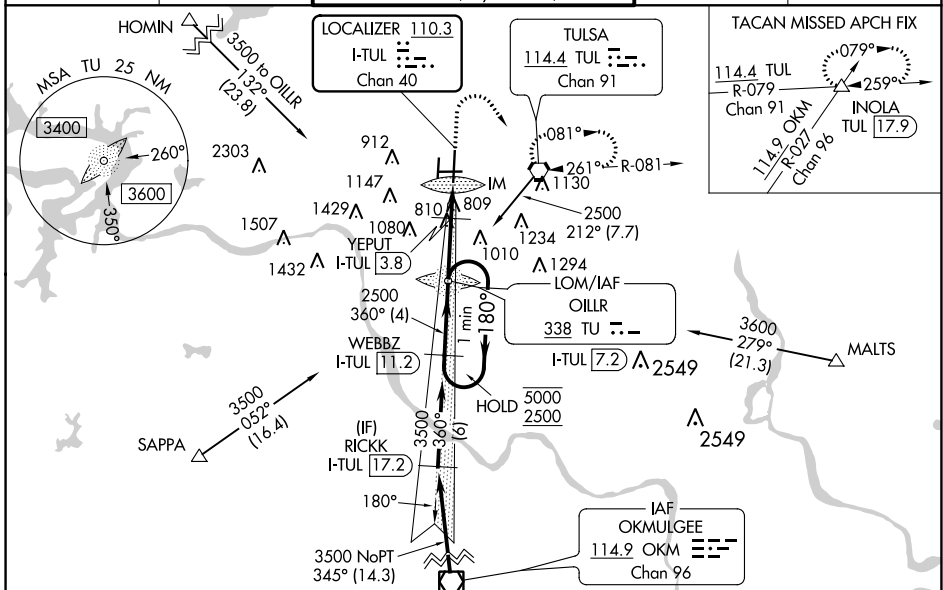
TULSA INTL (TUL)

ADF or DME required for procedure entry.

ALS-2

MISSED APPROACH: Climb to 2000 then climbing right turn to 2500 direct TUL VORTAC and hold. (TACAN aircraft climb to 2000 then climbing right turn to 3500 via TUL VORTAC R-079 to INOLA INT/17.9 DME and hold E, RT, 259° inbound).

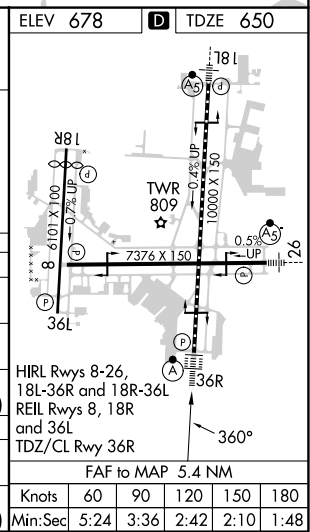
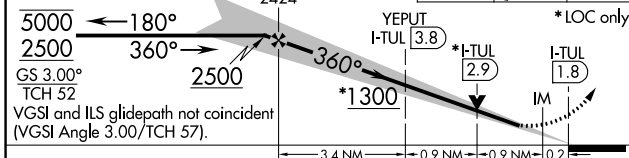
D-ATIS 124.9 377.2	TULSA APP CON 124.0 338.3	TULSA TOWER 121.2 310.8 (Rwys 18L-36R, 8-26) 118.7 257.8 (Rwy 18R-36L)	GND CON 121.9 348.6	CLNC DEL 134.05 284.7
------------------------------	-------------------------------------	--	-------------------------------	---------------------------------



SC-1, 31 OCT 2024 to 28 NOV 2024

SC-1, 31 OCT 2024 to 28 NOV 2024

One Minute Holding Pattern	OILR LOM I-TUL 7.2	2000	2500	TUL	ELEV 678	TDZE 650
----------------------------	--------------------	------	------	-----	----------	----------



CATEGORY	A	B	C	D	E
S-ILS 36R	850/18		200 (200-½)		
S-LOC 36R	1300/24	650 (700-½)	1300-1¾	650 (700-1¾)	
C CIRCLING	1300-1	622 (700-1)	1520-2½ 842 (900-2½)	1520-2¾ 842 (900-2¾)	1520-3 842 (900-3)
YEPUT FIX MINIMUMS (DME REQUIRED)					
S-LOC 36R	1060/24	410 (400-½)	1060/40	410 (400-¾)	
C CIRCLING	1120-1 442 (500-1)	1160-1 482 (500-1)	1520-2½ 842 (900-2½)	1520-2¾ 842 (900-2¾)	1520-3 842 (900-3)