

HI-ILS or LOC Z RWY 36R

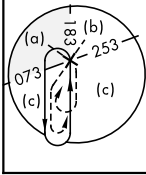
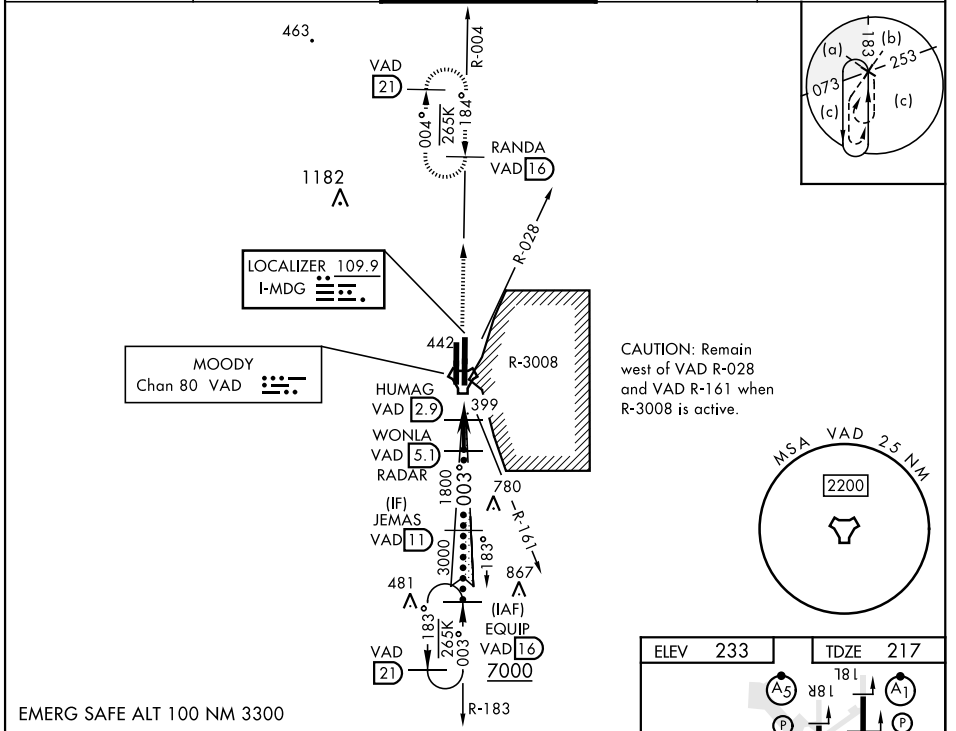
LOC I-MDG 109.9	APCH CRS 003°	Rwy ldg TDZE Arprt Elev 9300 217 233
---------------------------	-------------------------	--

[USAF]

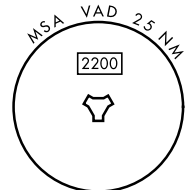
MOODY AFB (KVAD)

RADAR or DME required	ALSIF-1 (A1)	MISSED APPROACH: Climb to 3000 on VAD TACAN R-004 to RANDA and hold.
-----------------------	------------------------	--

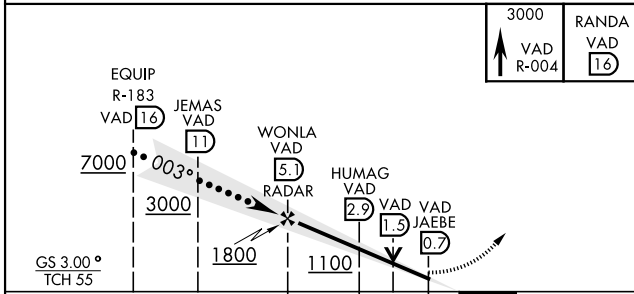
ATIS ★ 273.5	VALDOSTA APP CON 126.6 285.6	TOWER ★ 128.45 (CTAF) 257.625	GND CON 138.95 275.8	CLNC DEL 120.625 296.7
------------------------	--	--	--------------------------------	----------------------------------



CAUTION: Remain west of VAD R-028 and VAD R-161 when R-3008 is active.



EMERG SAFE ALT 100 NM 3300



ELEV 233	TDZE 217
HIRL all rws	
FAF to MAP 4.3 NM	
Knots	120 140 160 180 200
Min:Sec	2:09 1:51 1:37 1:26 1:17

181
36L
36R
8002 x 150
9800 x 150
0.3% UP
A5
A1
A4
A1
TWR

CATEGORY	C	D	E
S-ILS 36R *	417/24	200	(200-1/2)
S-LOC 36R **	660/45	443	(500-1/2)
CIRCLING	760-1 1/2 527 (600-1 1/2)	800-2 567 (600-2)	

HI-ILS or LOC Z RWY 36R

SE-4, 31 OCT 2024 to 28 NOV 2024

SE-4, 31 OCT 2024 to 28 NOV 2024